

**STAPHYLINIDS (COLEOPTERA: STAPHYLINIDAE)  
FROM MARAMUREȘ.  
MARAMUREȘ AND ȚIBLEȘ MOUNTAINS (ROMANIA)**

MELANIA STAN

**Abstract.** The paper presents some new contributions to the staphylinid fauna of the area of Maramureș and Țibleș Mountains: 56 species are mentioned, out of them 10 are mentioned for the first time: *Tachyporus dispar* (Payk.), *Callicerus rigidicornis* (Er.), *Anotylus complanatus* (Er.), *A. mutator* (Lohse), *Stenus boops* (Ljungh), *Philonthus addendus* Sharp, *Ph. coprophilus* Jarrige, *Ph. succicola* Thoms., *Quedius limbatus* (Heer) and *Tasgius winkleri* (Bernh.). All collecting sites are new mentioned for the presence of the staphylinids. For some species I present the drawings of genitalia in male.

**Résumé.** On présente des contributions nouvelles pour faune des Staphylinidae de la zone des Monts Maramureș et Țibleș. On mentionne 56 espèces, parmi quelles dix sont signalées pour la première fois: *Tachyporus dispar* (Payk.), *Callicerus rigidicornis* (Er.), *Anotylus complanatus* (Er.), *A. mutator* (Lohse), *Stenus boops* (Ljungh), *Philonthus addendus* Sharp, *Ph. coprophilus* Jarrige, *Ph. succicola* Thoms., *Quedius limbatus* (Heer) et *Tasgius winkleri* (Bernh.). Tout les sites de capture sont nouveaux pour la présence des Staphylinidae. Pour quelques espèces on présente les dessins de l'armure génitale du mâle.

**Key words:** Staphylinidae, Romania, Maramureș, Maramureș Mountains, Țibleș Mountains, faunistical news.

In 2003 the research on the invertebrate fauna diversity of Maramureș region continued within the area of the Maramureș Mountains (Poienile de sub Munte – small village Luhei, Repedea, Leordina, Crasna Vișeuului – 11 km upstream stream Frumușeaua, on the banks of the streams Pop Ivan and Hututeanca, Făina – 35 km far from Vișeu de Sus on the Vaser Valley), within the period 14<sup>th</sup> – 19<sup>th</sup> of June and of the Țibleș Mountains (Dragomirești, Sălișteea de Sus, Țibleș Mountains – up to 900 m altitude), within the period 20<sup>th</sup> – 23<sup>rd</sup> of June.

As regards the staphylinid fauna, all collecting sites from the basins of the streams Budescu Mare, Lutoasa, Coșnea (tributaries of the stream Rica, also tributary of the stream Ruscova, which flows in the river Vișeu) – area of the Maramureș Mountains – are new mentioned sites for staphylinids.

As regards the Massif Pop Ivan, the only mentions from literature are the Kuthy's ones (1897). Referring to us, the collectings were made on the banks of the stream Pop Ivan, at the feet of the mountain.

For Valea Vasercului (Vaser Valley), Frivaldszky (1871) mentioned a single collecting site: Făina, place where we also collected.

From the Țibleș Mountains some staphylinid species were mentioned by Csiki (1951): *Amphichroum canaliculatum* (Er.), *Acidota crenata* (F.), *Megarthrhus depressus* (Payk.), *Oxyporus rufus* (L.) and *Stenus biguttatus* (L.). This paper complete also the list of the staphylinid species found in the area of the Țibleș Mountains.

Collecting sites from the basins of the streams Idişor and Baicu (Idişor is a tributary of Baicu, which, in its turn, is a tributary of the river Iza) are new mentions for the presence of the staphylinids.

#### MATERIAL AND METHODS

During this trip in Maramureş 295 staphylinids specimens were collected. The localities and collecting sites are mentioned in figure 1 and are marked with the sign •.

*Collecting methods:* pitfall traps; direct collecting from the stony banks with sandy beaches of the streams; direct collecting from the cow and horse dung; collecting with the entomological net and light traps. The pitfall traps were mounted by Melania Stan and Dragoş Scăunaşu.

The pitfall traps were placed in the following sites:

- A. Poienile de sub Munte, small village Luhei, 7 km upstream chalet Coşnea, on the stream Rica, at the confluence of the streams Rica and Budescu Mare, in a mixed forest: beech and spruce fir bushes; altitude of about 1,000 m, 14<sup>th</sup>–19<sup>th</sup> of June;
- B. Poienile de sub Munte, small village Luhei, 6 km upstream chalet Coşnea, on the stream Rica, at the confluence of the streams Rica and Lutoasa (right bank); at the edge of the spruce fir forest; altitude of about 1,000 m, 14<sup>th</sup>–19<sup>th</sup> of June;
- C. Poienile de sub Munte, small village Luhei, at 500 m upstream chalet Coşnea, on the stream Coşnea, in a mixed forest: beech and spruce fir trees; altitude of about 900 m, 14<sup>th</sup>–19<sup>th</sup> of June;
- D. Poienile de sub Munte, small village Luhei, chalet Coşnea in an unmowed hayfield with *Hypericum perforatum*, *Dianthus* sp., *Trifolium pratense*, *T. repens*, *Campanula* sp., *Prunella vulgaris*, *Astragalus* sp., *Chrysanthemum leucanthemum*; altitude of about 900 m, 15<sup>th</sup>–19<sup>th</sup> of June;
- E. Poienile de sub Munte, small village Luhei, 500 m upstream chalet Coşnea, on the stream Coşnea, in a humid hayfield with *Juncus* sp., *Carex* sp., *Potentilla* sp., *Eriophorum* sp., *Orchis* sp., *Epipactis* sp., *Polygonum hydropiper*, with hydromorph soil and with springs at the edge of the forest (a very high ground-water); superiorly, towards the beech and spruce fir mixed forest, with young woods of beech and isolated beech trees; altitude of about 900 m, 15<sup>th</sup>–19<sup>th</sup> of June.

Identification of the material based on the external morphological features and on the study on the special structures – aedeagus and spermatheca (as in the case of the species of the subfamily Aleocharinae). For identification I used the following papers: Lohse (1964, 1974, 1989) and Coiffait (1974, 1978). For some of the identified staphylinid species I made the drawings of their aedeagus and sternite VI: *Philonthus coprophilus*, *Ph. cruentatus*, *Ph. decorus*, *Ph. marginatus*, *Ph. splendens*, the aedeagus for *Philonthus atratus*, *Quedius umbrinus*, *Gyrophypnus liebei*, median lobe in *Philonthus tenuicornis*, *Nehemitropia lividipennis*, *Plataraea brunnea*, inner side of the paramere and ventrite VI in *Philonthus tenuicornis* and tergite VI in the male of *Plataraea brunnea*, structures which offer important taxonomical features for the identification of the species. The drawings were made using camera lucida.

For each species the locality and the collecting site are mentioned (less for the collectings with the pitfall traps where the collecting site presented above will be

marked with letters), collecting date, number of specimens and the collector's abbreviated name.

The species mentioned from Maramureş in literature, found again by us, were marked by \*, and the species mentioned for the first time from Maramureş were marked by \*\*.

The whole material of staphylinids is preserved in the Entomological Collection of "Grigore Antipa" National Museum of Natural History.

#### Abbreviations.

In the taxonomic list the name of the collectors (from „Grigore Antipa” National Museum of Natural History, Bucharest) were abbreviated as follows: P. C. – Părvu Corneliu; S. D. – Scăunagu Dragoş; S. R. – Serafim Rodica; S. M. – Stan Melania; St. M. – Stănescu Mihai.

### RESULTS

Fifty-six species were identified which belong to the following subfamilies: Omaliinae (3 species), Tachyporinae (6 species), Aleocharinae (8 species), Oxytelinae (7 species), Steninae (4 species), Paederinae (5 species), Staphylininae (23 species).

Making a comparison with the period 1995-1998, 15 species were found again, the rest of 41 were not present in the material collected previously. 10 of the 41 species were not mentioned from Maramureş till now: *Tachyporus dispar* (Payk.), *Callicerus rigidicornis* (Er.), *Anotylus complanatus* (Er.), *A. mutator* (Lohse), *Stenus boops* (Ljungh), *Philonthus addendus* Sharp, *Ph. coprophilus* Jarrige, *Ph. succicola* Thoms., *Quedius limbatus* (Heer) and *Tasgius winkleri* (Bernh.).

#### Subfamily Omaliinae MacLeay, 1825

\**Eusphalerum alpinum* (Heer, 1839), Dragomireşti, Pârâul lui Pălcut (Pălcut's stream), clearing, on *Ranunculus acris*, 22 VI, 11 ♀♀ and 1 ♂, S. M.

\**Eusphalerum minutum* (Fabricius, 1792), Dragomireşti, Pârâul lui Pălcut (Pălcut's stream), clearing, on *Ranunculus acris*, 22 VI, 6 ♀♀ and 13 ♂♂, S. M.

\**Anthophagus angusticollis* (Mannerheim, 1830), Dragomireşti, Țibleş Mountains, at the feet, on the vegetation from the edge of the forest road: *Symphytum* sp., *Rubus* sp., *Urtica* sp., *Ranunculus* sp., ferns, 22 VI, 1 specimen.

#### Subfamily Tachyporinae MacLeay, 1825

\**Lordithon trinotatus* (Erichson, 1839), A, 2 specimens.

*Tachinus corticinus* Gravenhorst, 1802, C, 1 ♂.

\**Tachinus humeralis* Gravenhorst, 1802, Săliştea de Sus, forest road, near the stream Iđişor, under horse dung, 23 VI, 3 ♂♂, S. M.

\**Tachinus marginellus* (Fabricius, 1781), Făina, lawn near the stream Vaser, cow dung, 19 VI, 1 ♀, 1 ♂, S. M. and Săliştea de Sus, grazed lawn near the stream Iđişor, cow dung, 23 VI, 1 ♀, S. M.

*Tachinus pallipes* Gravenhorst, 1806, Făina, lawn near the stream Vaser, cow dung, 19 VI, 2 ♀♀; Săliştea de Sus, forest road, near the stream Iđişor, horse dung, 2 ♀♀, 1 ♂; Poienile de sub Munte, 6 km far from the chalet Coşnea, right bank of Rica at the confluence with Lutoasa, lawn at the edge of the spruce fir forest, 14 VI, 1 ♀, S. M.

\*\**Tachyporus dispar* (Paykull, 1789), C, 1 ♂ and D, 1 ♂.

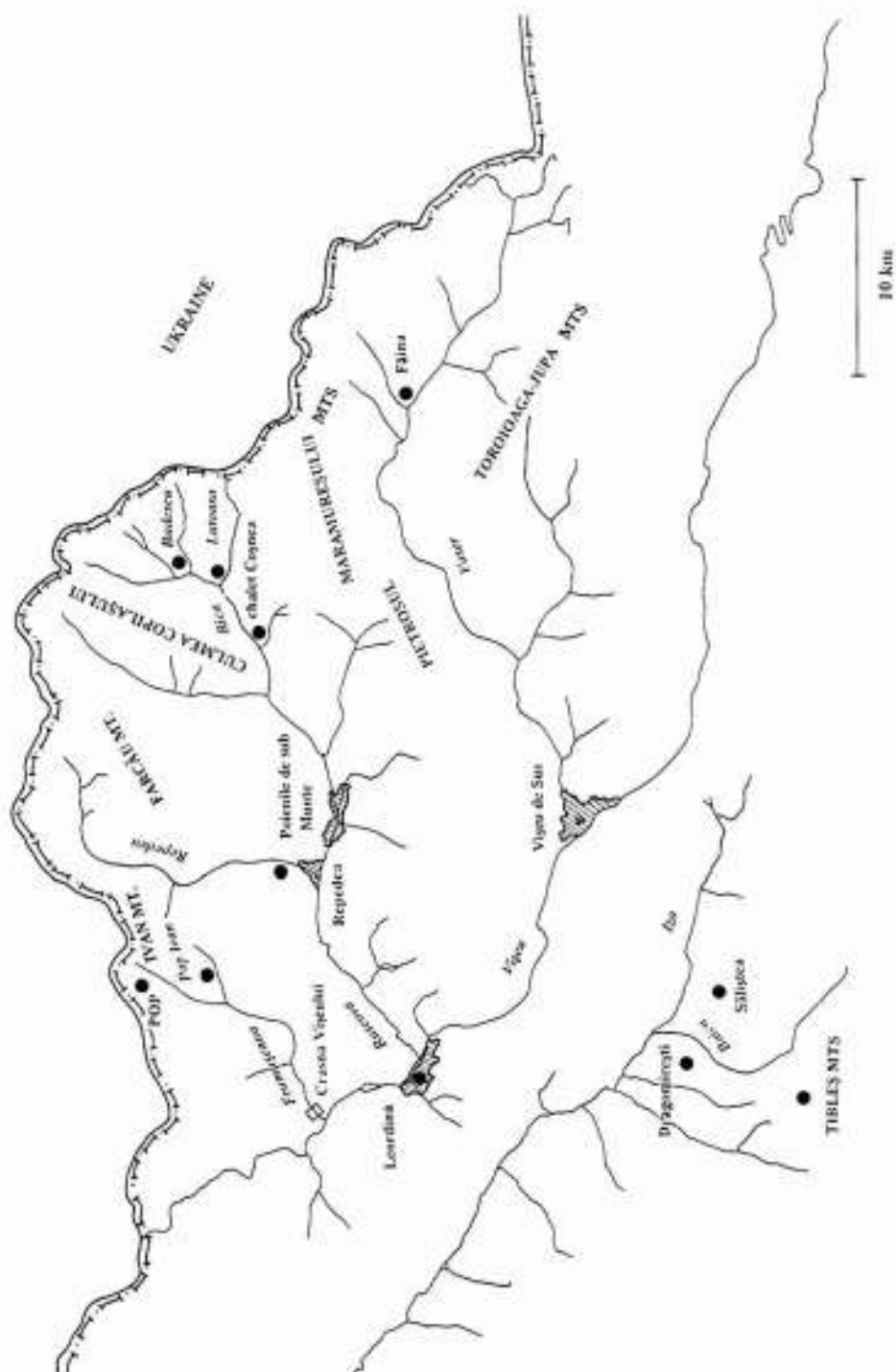


Fig. 1 – The map of the collecting sites from the area of the Maramureș and Tibleș Mountains

## Subfamily Aleocharinae Fleming, 1821

\**Aleochara brevipennis* Gravenhorst, 1806, Poienile de sub Munte, chalet Coșnea, hayfield, 16 VI, 1 ♀, P. C.

\**Aleochara laevigata* Gyllenhal, 1810, Fâina, lawn near the stream Vaser, cow dung, 19 VI, 1 ♂; Sălișteea de Sus, forest road, near the stream Idișor, horse dung, 23 VI, 1 ♂, S. M.

\**Aleochara tristis* Gravenhorst, 1806, Poienile de sub Munte, chalet Coșnea, the forest road near the stream Coșnea, cow dung, 16 VI, 2 ♀♀, S. M.

\*\**Callicerus rigidicornis* Erichson, 1839, C, 1 ♂.

*Liogluta microptera* Thomson, 1867, A, 2 specimens, B, 8 specimens.

\**Nehemitropia lividipennis* (Mannerheim, 1830), Poienile de sub Munte, village Luhei, the forest road near the chalet Coșnea, cow dung, 16 VI, 1 ♂, S. M. (Fig. 2).

\**Plataraea brunnea* (Fabricius, 1798), A, 3 ♂♂, C, 1 ♀ (Fig. 3 A, B).

## Subfamily Oxytelinae Fleming, 1821

*Deleaster dichrous* (Gravenhorst, 1802), Poienile de sub Munte, chalet Coșnea, collecting with a white light trap, 15 VI, 1 specimen, St. M.

\*\**Anotylus complanatus* (Erichson, 1839), Poienile de sub Munte, small village Luhei, right bank of Rica at

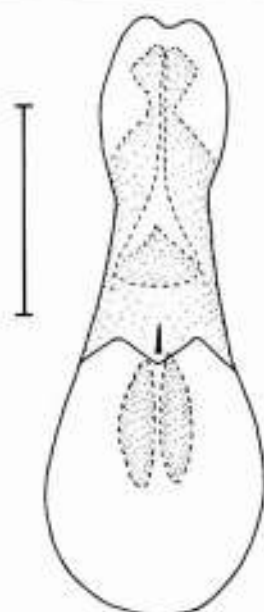


Fig. 2 – *Nehemitropia lividipennis* (Mannh.), median lobe (ventral view). Scale: 0.5 mm

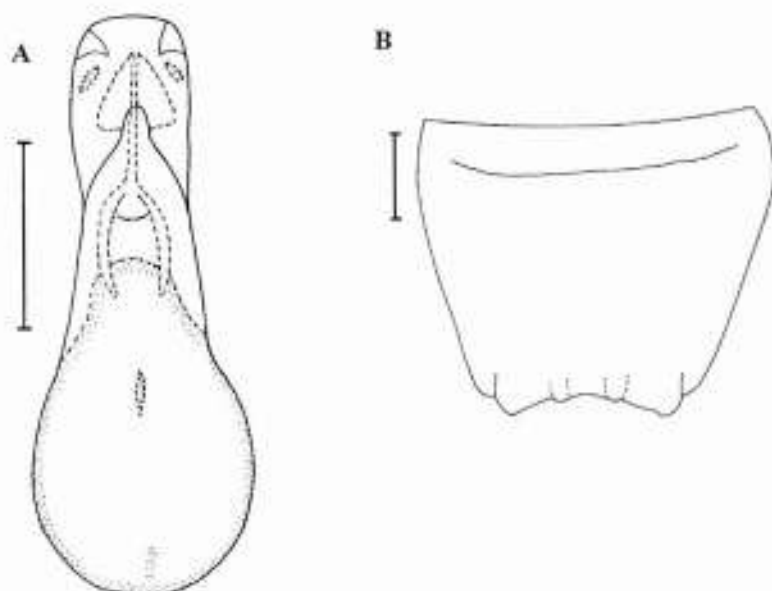


Fig. 3 – *Plataraea brunnea* (F.) A, median lobe (ventral view); B, VI<sup>th</sup> tergite (male). Scale: 0.5 mm

the confluence with Lutoasa, lawn at the edge of the spruce fir forest, cow dung, 14 VI, 1 ♂, S. M.

\*\**Anotylus mutator* (Lohse, 1936), Dragomirești, Țibleș Mountains, 900 m altitude, gallery IV, horse dung, 22 VI, 1 ♂, S. M.

\**Anotylus tetracariniatus* (Block, 1799), Poienile de sub Munte, small village Luhei, the forest road near the chalet Coșnea, cow dung, 16 VI, 6 specimens, S. M.; Săliștea de Sus, grazed lawn near the stream Idișor, cow dung, 23 VI, 7 specimens, S. M.

\**Oxytelus piceus* (Linnaeus, 1767), Săliștea de Sus, grazed lawn near the stream Idișor, cow dung, 23 VI, 1 ♀, S. M.

\**Oxytelus laqueatus* (Marsham, 1802), Poienile de sub Munte, small village Luhei, right bank of Rica at the confluence with Lutoasa, lawn at the edge of the spruce fir forest, 14 VI, 2 ♂♂, 2 ♀♀; Făina, lawn near the stream Vaser, cow dung, 19 VI, 5 ♀♀, S. M.

\**Platysthetus arenarius* (Geoffroy, 1785), Dragomirești, Țibleș Mountains, 900 m altitude, gallery IV, horse dung, 22 VI, 1 specimen, Țibleș Mountains, at the feet, 22 VI, 8 specimens; Făina, lawn near the stream Vaser, cow dung, 19 VI, 8 specimens; Poienile de sub Munte, village Luhei, right bank of Rica at the confluence with Lutoasa, lawn at the edge of the spruce fir forest, cow dung, 14 VI, 13 specimens; Săliștea de Sus, grazed lawn near the stream Idișor, cow dung, 23 VI, 5 specimens, S. M.

#### Subfamily Steninae MacLeay, 1825

\*\**Stenus boops* (Ljungh, 1810), Poienile de sub Munte, small village Luhei, bank of the stream Coșnea, 400-500 m upstream the confluence of Rica with Coșnea, 16 VI, 1 ♂, S. M.

\**Stenus flavipes* Stephens, 1833, Crasna Vișeului, 11 km upstream on Frumușeăua, valley of the stream Hututeanca, 17 VI, 1 specimen, S. R.

\**Stenus longiceps* Heer, 1839, Repedea, forest range Repedea, at about 10 m from the bank of the stream Repedea, on a gravel heap, 18 VI, 10 ♂♂, 1 ♀, S. M.

*Stenus providus* Erichson, 1839, Poienile de sub Munte, small village Luhei, about 1 km upstream the confluence of Rica with Coșnea, on the stream Coșnea, in a beech litter, near a small spring which reaches Coșnea, 16 VI, 1 ♀, S. M.

#### Subfamily Paederinae Fleming, 1821

*Paederidus rubrothoracicus rubrothoracicus* (Goeze, 1777), Poienile de sub Munte, small village Luhei, 500 m upstream the confluence Budescu Mare with Rica, on the bank of the stream Rica, 14 VI, 2 ♀♀, S. R.; Crasna Vișeului, 11 km upstream on Frumușeăua, bank of the stream Pop Ivan, 17 VI, 6 ♂♂, 2 ♀♀; S. M., bank of the stream Hututeanca, 17 VI, 2 ♂♂, 1 ♀, S. M.; Repedea, forest range Repedea, on the bank of the stream Repedea, 18 VI, 17 ♂♂, 8 ♀♀, S. M.; Făina, bank of the stream Vaser, 19 VI, 2 ♀♀, 1 ♂, P. C.

\**Paederidus ruficollis* (Fabricius, 1781), Leordina (railway station), in lucerne, bordered by *Trifolium* sp., *Equisetum* sp., *Phragmites communis*, *Myosotis* sp., *Sinapis arvensis*, 15 VI, 3 ♀♀, 1 ♂, S.M.; Poienile de sub Munte, small village Luhei, bank of the stream Coșnea, 16 VI, 6 ♀♀, 12 ♂♂, S. M.; Crasna Vișeului, 11 km upstream on Frumușeăua, bank of the stream Pop Ivan, 17 VI, 1 ♂ and the bank of the stream Hututeanca, 3 ♀♀, 2 ♂♂, S. M.; Repedea (forest range), on the bank of the stream Repedea, 18 VI, 3 ♀♀, 4 ♂♂, S. M.; Făina, bank of the stream Vaser, 19 VI, 1 ♀, 1 ♂, P. C.; Dragomirești, Lunca lui Cosiță (Cosiță's meadow),

confluence Idișor-Baicu, 22 VI, 1♂ S. D.; Sălișteea de Sus, bank of the stream Idișor, 23 VI, 4♀♀, 3♂♂, S. M.

*Paederus limophilus* Heer, 1839, Poienile de sub Munte, small village Luhei, bank of the stream Coșnea, 16 VI, 3♀♀, 3♂♂, S. M.; Crasna Vișeuului, 11 km upstream on Frumușeaua, bank of the stream Hututeanca, 17 VI, 1♂, S. M.; Repedea (forest range), bank of the stream Repedea, 18 VI, 1♂, S. M.

*Rugilus erichsoni* (Fauvel, 1867), C, 1♂, 1♀; E, 1♀.

\**Rugilus rufipes* (Germar, 1836), B, 1♂.

Subfamily Staphylininae Latreille, 1802

Tribe Othiini Thomson, 1859

\**Othius crassus* Motschulsky, 1858, B, 2 specimens.

Tribe Staphylinini Latreille, 1802

\**Bisnius fimetarius* (Gravenhorst, 1802), Poienile de sub Munte, small village Luhei, lawn at the confluence of Rica with Lutoasa, cow dung, 14 VI, 1♀, S. M.; Dragomirești, Țibleș Mountains, altitude 900 m, gallery IV, horse dung, 22 VI, 1♀, S. M.; Sălișteea de Sus, near the stream Idișor, on the forest road, horse dung, 23 VI, 1♂, S. M.

\*\**Philonthus addendus* Sharp, 1867, Poienile de sub Munte, small village Luhei, hayfield, 16 VI, 1♀, P. C.

*Philonthus atratus* (Gravenhorst, 1802), Făina, lawn near the stream Vaser, cow dung, 19 VI, 1♀, S. M.; Sălișteea de Sus, near the stream Idișor, horse dung on the forest road, 23 VI, 1♂, S. M. (Fig. 4).

\**Philonthus caerulescens* Lacordaire, 1835, Repedea (forest range), bank of the stream Repedea, 18 VI, 3♂♂, 3♀♀, S. M. (Fig. 5 A, B).

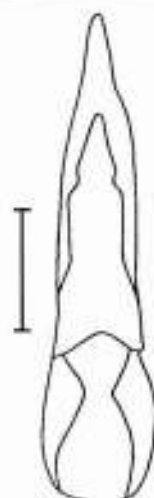


Fig. 4 – *Philonthus atratus* (Grav.), aedeagus (ventral view). Scale: 0.25 mm

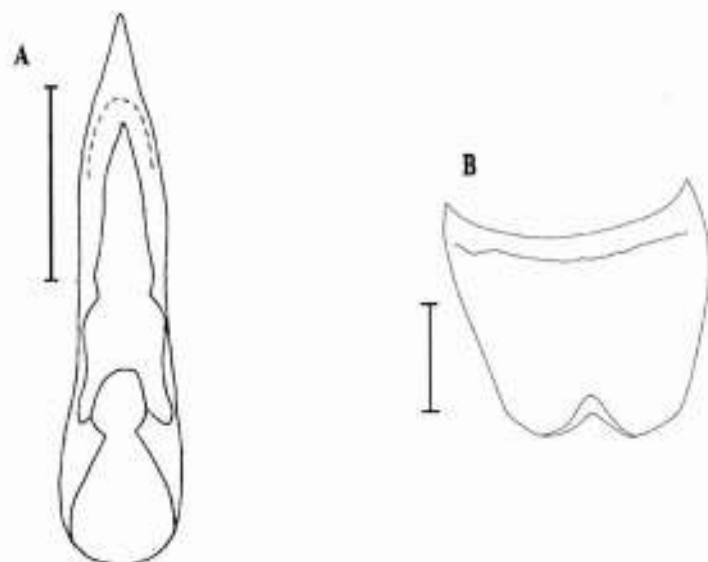


Fig. 5 – *Philonthus caerulescens* Lac., A, aedeagus (ventral view); B, VI<sup>th</sup> sternite (male). Scale: 0.25 mm.

**\*\**Philonthus coprophilus*** Jarrige, 1949, Sălișteea de Sus, near the stream Idișor, on the forest road, horse dung, 23 VI, 3 ♀♀, 1 ♂, S. M. (Fig. 6).

\**Philonthus cruentatus* (Gmelin, 1789), Poienile de sub Munte, small village Luhei, forest range near the stream Coșnea, cow dung, 16 VI, 1 ♀, 1 ♂, S. M.; Sălișteea de Sus, near the stream Idișor, on the forest road, horse dung, 23 VI, horse dung, 1 ♀ (Fig. 7 A, B).

*Philonthus decorus* (Gravenhorst, 1802), A, 1 ♂ (Fig. 8 A, B, C).

\**Philonthus longicornis* Stephens, 1832, Poienile de sub Munte, small village Luhei, forest road near the stream Coșnea, cow dung, 16 VI, 1 ♀, S. M.

\**Philonthus marginatus* (Müller, 1764), Făina, lawn near the stream Vaser, cow dung, 19 VI, 1 ♀, S. M.; Dragomirești, Țibleş Mountains, 900 m altitude, gallery IV, horse dung on the forest road, 22 VI, 3 ♂♂, 1 ♀, S. M.; Sălișteea de Sus, near the stream Idișor, horse dung on the forest road, 23 VI, 2 ♂♂, S. M. (Fig. 9 A, B).

*Philonthus splendidus* (Fabricius, 1792), Poienile de sub Munte, small village Luhei, lawn at the confluence of Rica with Lutoasa, cow dung, 14 VI, 1 ♂, S. M.; Sălișteea de Sus, near the stream Idișor, on the forest road, horse dung, 2 ♂♂, S. M. (Fig. 10 A, B, C).

**\*\**Philonthus succicola*** Thomson, 1860, Poienile de sub Munte, small village Luhei, confluence Rica-Lutoasa, on a beech log, 14 VI, 1 ♀; S. R.; Sălișteea de Sus, near the stream Idișor, horse dung on the forest road, 23 VI, 1 ♀, S. M.

\**Philonthus tenuicornis* Mulsant & Rey, 1853, Făina, lawn near the stream Vaser, cow dung, 19 VI, 1 ♂, S. M. (Fig. 11 A, B, C).



Fig. 6 - *Philonthus coprophilus* Jarrige, aedeagus (ventral view). Scale: 0.5 mm

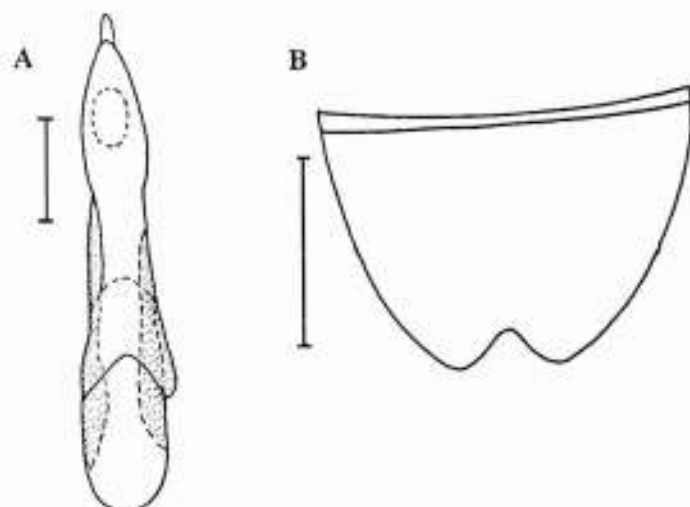


Fig. 7 - *Philonthus cruentatus* (Gmelin), A, aedeagus (ventral view); B, VI<sup>th</sup> sternite (male). Scale: A - 0.25 mm; B - 0.5 mm



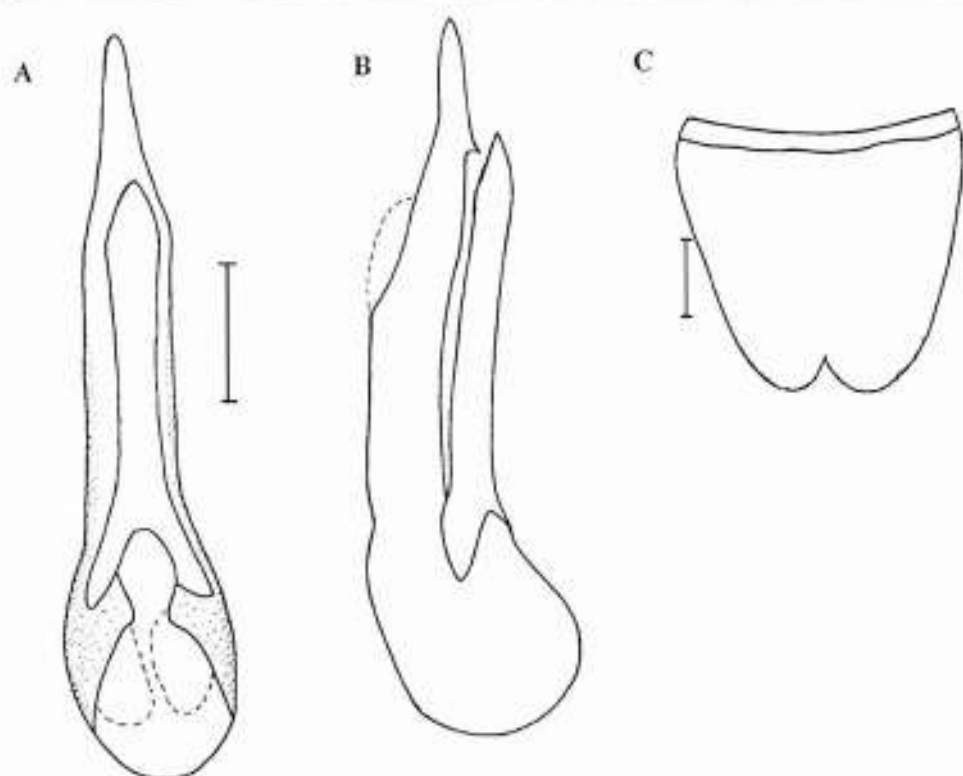


Fig. 8 - *Philonthus decorus* (Grav.), A., aedeagus (ventral view); B, aedeagus (lateral view); C, VI<sup>th</sup> tergite (male). Scale: 0.5 mm

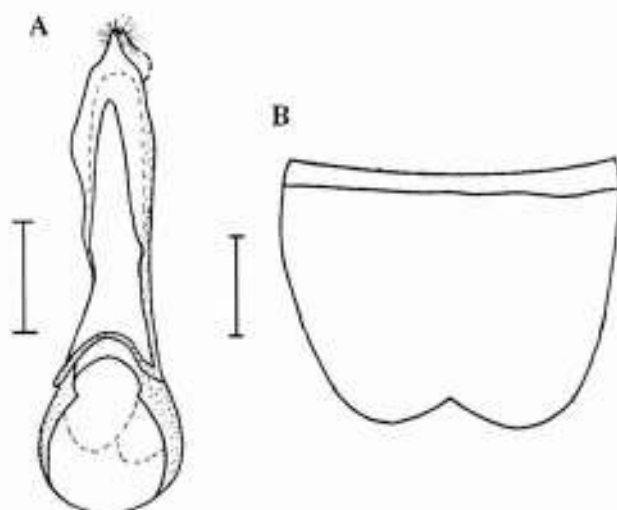


Fig. 9 - *Philonthus marginatus* (Müll.), A, aedeagus (ventral view); B, VI<sup>th</sup> sternite. Scale: A - 0.25 mm; B - 0.5 mm

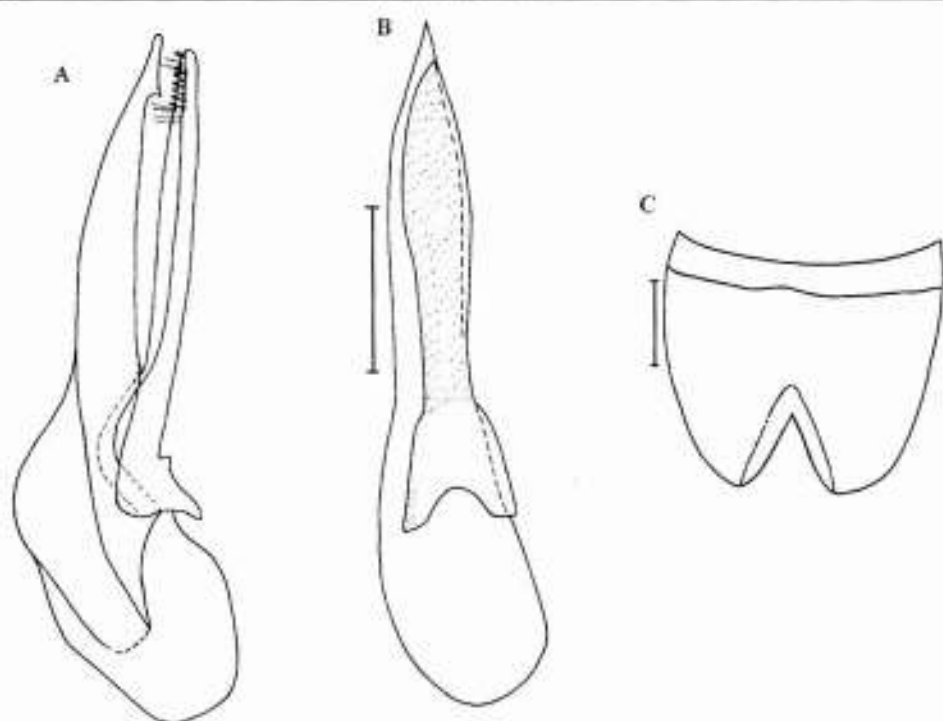


Fig. 10 – *Philonthus splendens* (F.), A, aedeagus (ventral view); B, aedeagus (lateral view); C, VI<sup>th</sup> sternite (male). Scale: 0.5 mm

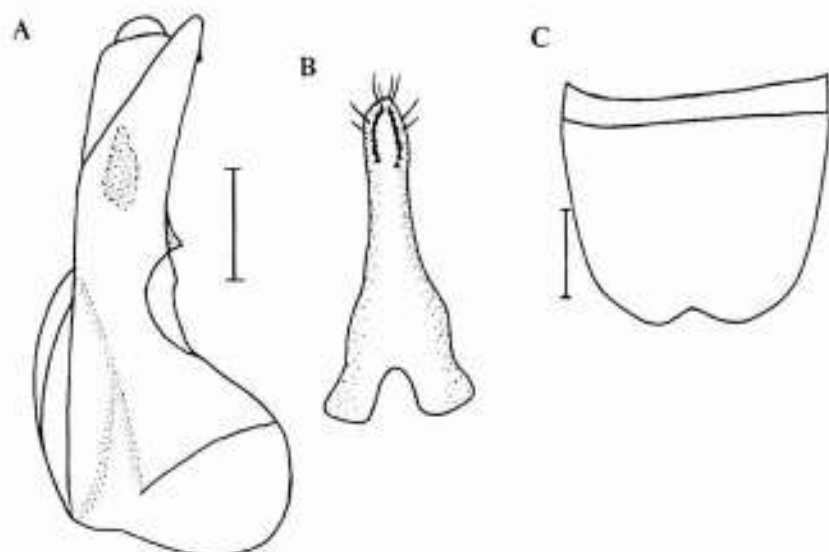


Fig. 11 – *Philonthus tenuicornis* Muls. & Rey, A, median lobe (lateral view); B, internal face of paramera with sensorial tubercles and setae; C, VI<sup>th</sup> sternite (male). Scale: A, B - 0.25 mm; C - 0.5 mm



Fig. 12 – *Quedius umbrinus* Er., aedeagus (lateral view). Scale: 0.25 mm

*Quedius fuliginosus* (Gravenhorst, 1802), E, 2 ♀♀; Poienile de sub Munte, small village Luhei, confluence Rica-Lutoasa, on a beech log, 14 VI, 1 specimen S. R.

\*\**Quedius limbatus* (Heer, 1839), B, 1 ♀.

\**Quedius obscuripennis* Bernhauer, 1901, A, 1 ♀.

*Quedius paradisiensis* (Heer, 1839), A, 1 ♀; B, 1 ♂; C, 1 ♂.

\**Quedius umbrinus* Erichson, 1839, C, 1 ♂ (Fig. 12).

*Ocytus macrocephalus* (Gravenhorst, 1802), A, 1 ♀, 1 ♂.

\**Platydacus fulvipes* (Scopoli, 1763), C, 3 specimens.

*Staphylinus erythropterus* Linnaeus, 1758, C, 1 ♂; E, 1 ♂, 2 ♀♀.

\*\**Tasgius winkleri* (Bernhauer, 1906), E, 1 ♀.

#### Tribe Xantholinini Erichson, 1839

\**Gyrophypnus angustatus* Stephens, 1833, Poienile de sub Munte, small village Luhei, forest road near the stream Coșnea, cow dung, 16 VI, 1 ♀, S. M.

\**Gyrophypnus liebei* Scheerpeltz, 1926, Făina, lawn near the stream Vaser, under cow dung, 19 VI, 1 ♀, S. M.; Dragomirești, Tibleș Mountains, at the feet, under the horse dung, 22 VI, 4 ♀♀, 2 ♂♂, S. M. (Fig. 13).

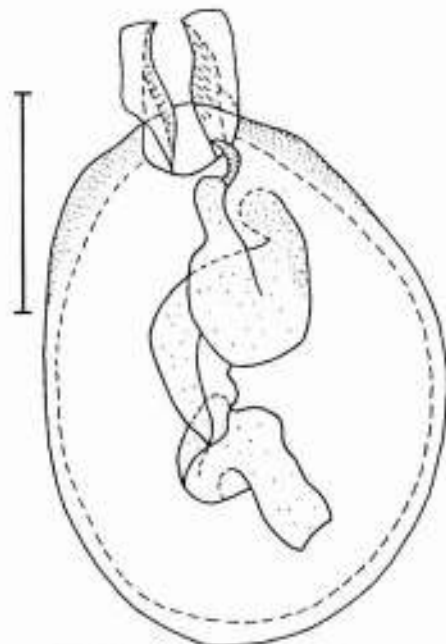


Fig. 13 – *Gyrophypnus liebei* Scheerp., aedeagus (ventral view). Scale: 0.5 mm

As a result of the campaign 1995-1998 and of the trips from June 2003 the number of the staphylinid species collected from Maramureș is of 101 species. Total number of the species known from Maramureș and Rodna Mountains reached 387 species, in comparison with the 377 species previously mentioned (Stan, 2002), that means 31.36 % from total number of staphylinid species mentioned from Romania, as yet.

#### ACKNOWLEDGEMENTS

Thanks to Prof. Gavril Ardelean („Vasile Goldiș” University – Satu Mare), to Dr. Iosif Beres (Museum – Sighetu Marmatiei) and to Dr. Corneliu Părvu („Grigore Antipa” National Museum of Natural History) – co-ordinators of the project „Knowledge of the invertebrates of Maramureș” for the good organization of the collecting trip. Thanks to Dr. Gyorgy Makranczy for his help in finding Coiffait’s papers. Thank to Mrs Aurora Dinu for the drawing traced in China ink. I also thank to the anonymous referees for their constructive comments on my manuscript and for their publishing advice.

STAFILINIDE (COLEOPTERA: STAPHYLINIDAE) DIN MARAMUREȘ,  
MUNȚII MARAMUREȘULUI ȘI ȚIBLEȘULUI (ROMÂNIA)

REZUMAT

Lucrarea aduce noi contribuții la cunoașterea faunistică a stafilinidelor din Maramureș, fiind semnalate 56 specii colectate în perioada 14–23 iunie 2003 din zona Munților Maramureșului și a Munților Țibleșului. 31 dintre speciile citate nu au fost găsite în materialul colectat anterior (1995–1998), iar alte 10 specii nu au fost semnalate până în prezent din Maramureș: *Tachyporus dispar* (Payk.), *Callicerus rigidicornis* (Er.), *Anotylus complanatus* (Er.), *A. mutator* (Lohse), *Stenus boops* (Ljungh), *Philonthus addendus* Sharp, *Ph. coprophilus* Jarrige, *Ph. succicola* Thoms., *Quedius limbatus* (Heer) și *Tusgius winkleri* (Bernh.). Toate siturile de colectare din bazinele păraurilor: Budescu Mare, Lutoasa, Coșnea, Baicu și Idișor sunt situri noi de semnalare a prezenței stafilinidelor. Pentru câteva dintre speciile de stafiline identificate sunt prezentate desene de aedeagus, lob median, fața internă a paramerei, sternitul VI și tergitul VI la mascul, structuri care oferă caractere taxonomice importante în identificarea speciilor.

LITERATURE CITED

- COIFFAIT, H., 1974 – Coléoptères Staphylinidae de la Région Paléartique Occidentale II. Sous famille Staphylininae, Tribus Philonthini et Staphilini. Nouvelle Revue d'Entomologie, 4 (4) supplément: 1–593.
- COIFFAIT, H., 1978 – Coléoptères Staphylinidae de la Région Paléartique Occidentale III. Sous famille Staphylininae, Tribu Quediini, Sous famille Paederinae, Tribu Pinophilini. Nouvelle Revue d'Entomologie, 8 (4) supplément: 7–364.
- CSIKI, E., 1951 – Fauna jukov Gori Radna (Die Käferfauna des Rodnaer Gebirge). Acta Biologica Academiae Scientiarum Hungaricae, 2: 119–168. (in Russian)
- FRIVALDSZKY, J., 1871 – Adatok Máramaros vármegye faunájához. Matematikai és Természettudományi Közlemények, 9: 210–212. (in Hungarian)
- KUTHY, D., 1897 – Ord. Coleoptera. Pp. 1–214. In: A Magyar Birodalom állatvilága (Fauna Regni Hungariae), Kyrályi Magyar Természettudományi Társulat, Budapest. (in Hungarian and Latin)
- LOHSE, G. A., 1964 – Staphylinidae I (Micropeplinae bis Tachyporinae). In: H. Freude, K. Harde & G.A. Lohse, eds. Die Käfer Mitteleuropas, Goecke & Evers, Krefeld, 4: 1–247.
- LOHSE, G. A., 1974 – Staphylinidae II (Hypocyphinae und Aleocharinae). In: H. Freude, K. Harde & G.A. Lohse, eds. Die Käfer Mitteleuropas, Goecke & Evers, Krefeld, 5: 1–304.
- LOHSE, G. A., 1989 – Ergänzungen und Berichtigungen zu Freude H., Harde K. W. & Lohse G. A., Band 4 und 5. In: G. A. Lohse. & W. H. Lucht, eds. Die Käfer Mitteleuropas, 12: 121–240.
- STAN, M., 2002 – Rove beetles (Coleoptera: Staphylinidae) from Maramureș (Romania). Travaux du Muséum National d'Histoire Naturelle "Grigore Antipa", 44: 209–248.

Received: February 10, 2004

Accepted: March 16, 2004

Muzeul Național de Istorie Naturală „Grigore Antipa”  
Sos. Kiseleff, nr. 1, 011341 București 2, România  
e-mail: mstan@antipa.ro