

<i>Travaux du Muséum National d'Histoire Naturelle «Grigore Antipa»</i>	Vol. LII	pp. 31–52	© Octobre 2009
---	----------	-----------	-------------------

**THE CATALOGUE OF THE “DR. MARCEL BRÂNDZĂ”
ZOOCECIDIA HERBARIUM FROM THE “GRIGORE ANTIPA”
NATIONAL MUSEUM OF NATURAL HISTORY (BUCUREȘTI)**

MIHAI STĂNESCU

Abstract. The „Dr. Marcel Brândză” zooecidia herbarium, curated at the „Grigore Antipa” National Museum of Natural History from București, comprises of 301 dried vegetal samples with cecidia produced by approximately 200 galligen species. The catalogue of this collection, although outdated, is a consistent body of both faunistic and floral data for Romania, all its samples being collected in different sites throughout the country.

Résumé. Le herbier de zoocécidies “Dr. Marcel Brândză”, conservé dans le Muséum National d’Histoire Naturelle „Grigore Antipa” de București, comprend 301 échantillons végétaux desséchés avec des cécidies produites par approximativement 200 espèces galligènes. Le catalogue de cette collection, bien que périmé, est un corps cohérent des données faunistiques et floristiques pour la Roumanie, tous les échantillons étant collectés dans différents localités du pays.

Key words: zooecidia, collection, Romanian fauna and flora.

INTRODUCTION

Owning one of the oldest and largest facilities dedicated to the curation of the natural history collections from Romania, the “Grigore Antipa” National Museum of Natural History, București posses a large number of collections. Many of them are extremely important, scientifically and historically, both national and international. These collections represent, at a European scale, a small piece of “the only available physical sample, albeit uneven and fragmented, of biological diversity over time” (Scoble, 2002). Hence, to be able to fulfill their role of being an irreplaceable resource for documenting biodiversity in a coherent, consistent and verifiable way, these collections have to be not only well curated. It is equally important to make the information associated with the objects from these collections available, thus increasing the amount of data requested by a large number of studies, especially faunistic and taxonomic ones. This is why, aside from curation work, capturing and organizing data associated with the specimens from the natural history collections becomes one of the key tasks that fulfils the completion of a modern, dedicated collection manager’s mission.

As part of the „Grigore Antipa” National Museum of Natural History patrimony, there are several collections of galligen organisms. One of the most important among them is the „Dr. Marcel Brândză” zooecidia herbarium.

A renowned Romanian botanist. Life and career

Marcel Alex Brândză was born in Iași, on March 1st, 1868. Even since its childhood he was keen attracted by nature. Later, during his school years, he became passionate about botany.

Between 1883-1887 he studied at the National High School in Iași, where he obtains his first licence degree. After graduation, he went on studying at the Natural Science Department within the Faculty of Sciences in București. Here he was awarded a grant to study at Sorbonne and thus left București to complete his education in Paris, France. He took his BSc degree and later on his PhD degree under the supervision of Prof. Gaston Bonnier, steadfastly studying the growth of seeds' epithelia at the plants from Geraniaceae, Lythraceae and Onagraceae families (Brândză, 1889, 1890 a, b, 1891, 1895) as well as the anatomic structure of some vegetal hybrids produced by sexual means (Brândză, 1890 a, c). His PhD dissertation, presented on February 21st, 1891 was entitled „Développement des téguments de la graine” („Development of seeds' epithelia”).

Upon its return to Romania he was appointed Professor at several High Schools in București, Craiova and Focșani. During this early period, aside of papers regarding history of science (Brândză, 1905 b), he manage to publish his first study on galligen organisms (Brândză, 1905 a). In between 1909-1910, after a lot of efforts, he was appointed Professor of Agricultural botany, Geology and Mineralogy at the Agricultural Higher School from Herăstrău. His growing interest for studying myxomycetes (plasmodial slime molds) and zooecidia lead him to the publication of its first papers about this subject on the eve of the World War I (Brândză, 1914 a, b).

After the end of World War I, he was invited to deliver courses to the Pharmacy College within the University of București as well as to several famous high schools from the chief town. Thus, between 1920-1927 he was appointed Professor at „Matei Basarab” High School after which he moved on to deliver biology courses at the „Dimitrie Cantemir” College. In 1924 he was appointed Lecturer at the Pharmacy College within the University of București and from 1927 he was in charge with the curation of the București Botanical Institute's cryptogams herbarium. In this time, he had a fundamental contribution to the study of some groups of inferior fungi from Romania, he pioneered the studies on galls producing organisms and he drew up several handbooks for flora. Unfortunately, he didn't live long enough to publish his handbook for wooden plants which he was working on during the last years of his life; this is why it has been published posthumously by one of his latest collaborators, Miss Panca Eftimiu.

He pass away on March 30th, 1934, in București, leaving behind several unfinished projects: among them a number of tomes from the „Illustrated Flora of Romania” as drafts, a „Handbook of plants with simple and compound flowers from Romania”, a study regarding the flora from București and its outskirts and a „Textbook of Systematic Botany”.

During a scientific career of more than 40 years long, Marcel Brândza has published a rich number of studies regarding the flora and the fauna of galligen organisms from Romanian, having the chance to bind his name on the first description of several taxa within the large genus of parasitic myxomycetes *Physarum* Pers.:

– *Ph. aureum* Brândză, 1928 not *Ph. aureum* Pers. 1794 (syn. *Physarum superbum* Hagelst; Brândză, 1928 a, p. 261);

– *Ph. cinereum* Pers. var. *scintillans* Brândză, 1928 (Brândză, 1928 a, p. 260);

– *Ph. globuliferum* Pers. var. *confluens* Brândză, 1928 (Brândză, 1928 a, p. 253);

– *Ph. sessile* Brândză, 1928 (Brândză, 1928 a, p. 260).

His remarkable contribution in the field of mycology doesn't end here. Thus, *Lamproderma gulielmae* Meylan was first described and illustrated by Marcel

Brândză (Brândză, 1916 b, p. 196, pl. Ii, fig. 3) from luxuriant growths found by him on dead beech leaves in the mountain woods of Moldavia, but he initially regarded this species as a variety of *L. echinulatum* (Berk) Rostaf.

Throughout his career, Marcel Brândză collected a large amount of biological material which was subsequently used to build up several scientific collections. The valuable collection of myxomycetes bearing his name is currently curated as part of the General Herbarium of the „Dimitrie Brândză” Botanic Garden, University of București (BUC).

Zooecidia herbarium

The „Dr. Marcel Brândză” zooecidia herbarium has become part of the „Grigore Antipa” National Museum of Natural History’s collections by the mid of 20th century. This collection was the starting point for many studies made up during the early decades of the last century regarding the gall producing organisms from Romania, being an essential reference for anyone interested in studying galls and gall producing organisms from the Central and South-Eastern Europe. Comprising samples collected from different plant species, this collection offers, at the same time, a consistent body of original yet unpublished floristic data.

The „Dr. Marcel Brândză” zooecidia herbarium (named by his author „Cecidotheca Dacica”) was build up with the aim to become Romania’s first cecidological reference collection. The biological material within this collection was fully collected, prepared and identified by Dr. Marcel Brândză himself. Strictly speaking, the set up of this herbarium was accomplished in 2 steps, with the first one finished in November 1920 (series I, II, III and IV) and the second one in April 1921 (series V and VI).

This herbarium consists out of 301 herbarium sheets, hardbound tied in with 1.5 cm wide black fabric ribbons, in six series of 50 herbarium sheet each (see figure 1). The samples are placed in paper envelopes, pinned on standard herbarium sheets of cartridge paper (see figures 2 and 3). Each sheet is sealed with „Dr. M. Brândză, CECIDOTHECA DACICA” inscription. Samples are numbered using printed labels applied directly on the envelopes; these numbers can be found also on the identification label, printed and attached on the herbarium sheet near the envelope containing the sample. A large number of samples have also below the label with the succession number a stamped notice with the mention „Houard, ZOOCECID., No...” – this is the species rank number after Clodomir Houard’s monography (1908-1913), the reference used by Dr. Marcel Brândză for both checking the identification of galligen species and organizing his herbarium.

By making this catalogue we have tried to take advantage of the last achievements in the nomenclature and systematics of the European invertebrate fauna. It is why this catalogue largely follows the scientific nomenclature recommended by the *Fauna Europaea Web Service*. When mentioned, infrasubspecific taxa (possible to identify after the constant presence of one or several morphological characters) have no systematic relevance. For the vegetal species we have used the scientific nomenclature recommended by the „Flora Europaea Check-List and Chromosome Index” (Moore, 2009).

For an easier identification of the sites from which the samples have been collected, a list was made including (when possible), the UTM code (after Lehrer & Lehrer, 1990).

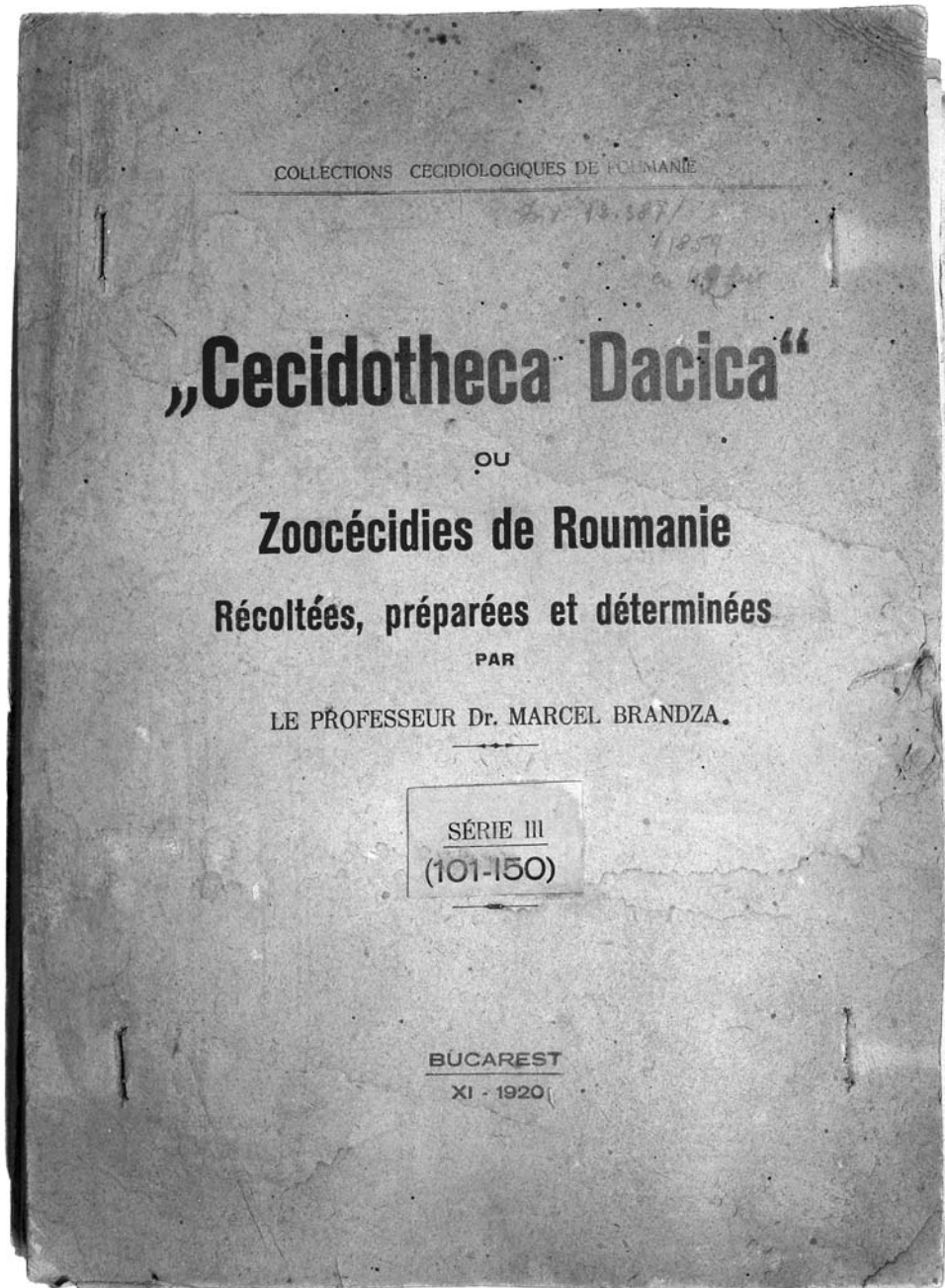


Fig. 1 – The front page of the III-rd series of the „Dr. Marcel Brândză” zoocécidia herbarium.

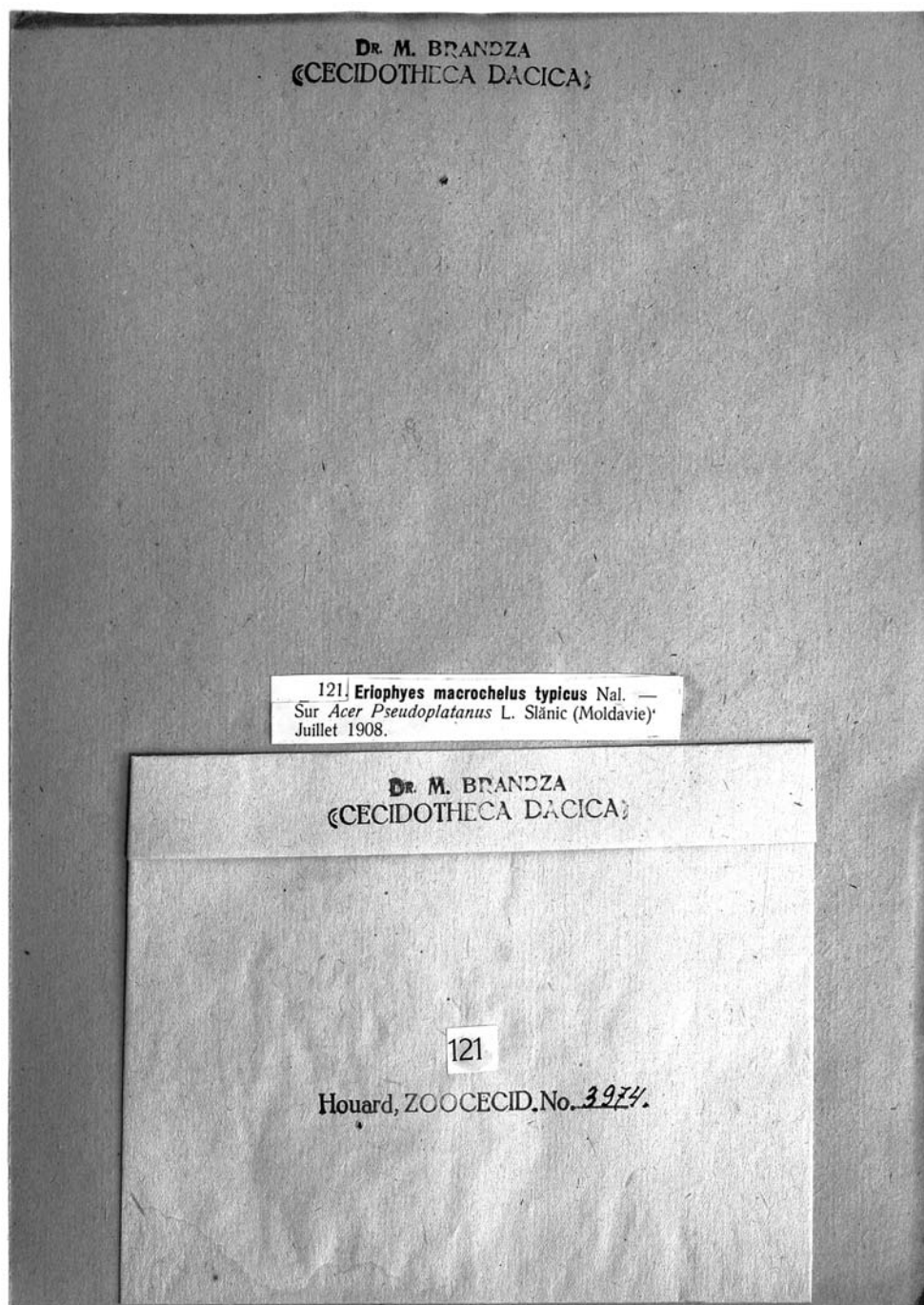


Fig. 2 – Sheet from the „Dr. Marcel Brândză” zoocecidia herbarium with the envelope containing a sample with galls.



Fig. 3 – Sample of *Acer pseudoplatanus* L. with galls produced by *Aceria macrochelus* (Nalepa, 1891) (syn. *Eriophyes macrochelus typicus* Nalepa, 1891) – the „Dr. Marcel Brândză” zooecidia herbarium, herbarium sheet no. 121.

The list with the sites in Romania from which the samples within zooecidia herbarium

„Dr. Marcel Brândză” have been collected

(at the end of each site, between brackets, the corresponding UTM code)

- Adjud – surroundings of Adjud town, Vrancea County (NM 10).
 Asău – village in the Bacău County (MM 54).
 Babele forest – forest near Putna village, Vrancea County (NL 07).
 Bacău – surroundings of the town of Bacău, Bacău County (MM 95/96).
 Bahana – local toponym near the village Topești, Vrancea County (ML 88).
 Barboși – loessoid region on the left bank of the river Danube, today a neighbourhood in the Galați town, Galați County (NL 83).
 Breaza de Jos – village in the Prahova County (LL 90).
 București (Bucharest) surroundings of the city of București (MK 21/22/31/32).
 Bufta – small town in the Ilfov County (MK 13).
 Buluc (Putna) – along Putna valley nearby the Buluc hermitage, within the range of the Jariștea village, Vrancea County (NL 06/07).
 Bușteni – small town in the Prahova County (LL 82/83).
 Câmpina – small town in the Prahova County (LK 99/MK 09).
 Cernica – village in the Ilfov County (MK 41).
 Chitila – village in the Ilfov County (MK 12/22).
 Ciocănești – Ciocănești forest, near the homonym village, Dâmbovița County (MK 03/13).
 Comana – Comana forest, within the range of Mihai Bravu village, Giurgiu County (MJ 39).
 Comarnic – small town in the Prahova County (LL 90/91).
 Comănești – small town in the Bacău County (MM 54).
 Cotești – village in the Vrancea County (NL 05).
 Crângu forest – forest in the surroundings of the Focșani town, Vrancea County.
 Dadilov forest – forest near Mihai Bravu village, Giurgiu County (MJ 28).
 Dălhăuți – village in the Vrancea County (NL 05).
 Doftana – village in the Prahova County (MK 09).
 Durău – the footsteps of Ceahlău mountains, near the Durău hermitage (MN 21).
 Faraoni – it probably refers to collecting made near the village Faraonele, Vrancea County (NL 06).
 Filaret – Filaret hill, București (MK 32).
 Focșani – surroundings of the Focșani town, Vrancea County (NL 15/16).
 Focșani, Putna – along Putna valley, within the range of the Focșani town, Vrancea County.
 Fundeni – on the shore of Fundeni lake, București (MK 32).
 Galați – surroundings of the Galați town, Galați county (NL 73/82/83).
 Gugești – village in the Vrancea County (NL 04/14).
 Hanu Conachi – forest near Hanu Conachi village, Galați County (NL 44).
 Herăstrău – on the shore of Herăstrău lake, București (MK 21).

- Letea – near the village Letea Veche, Bacău County (MM 95).
- Mangalia – surroundings of the Mangalia town, Constanța County (PJ 25).
- Mănești – village in the Dâmbovița County (LK 67/68).
- Măriuța – village in the Călărași County (MK 53).
- Medgidia – surroundings of the Medgidia town, Constanța County (PJ 09/PK 00).
- Murfatlar – surroundings of the Murfatlar town, Constanța County (PJ 19).
- Neagră forest – forest near Putna village, Vrancea County (NL 07).
- Neamț – it refers to the collecting made in different places within Neamț County, without pointing to a sharp location.
- Neamț Monastery – woods near the Neamț Monastery, Neamț County (MN 43).
- Oglinzi – village in the Neamț County (MN 53).
- Odobasca – village in the Vrancea County (ML 95).
- Pantelimon – village in the Ilfov County (MK 32).
- Posada – village in the Prahova County (LL 91).
- Prahova – it refers to collecting made along Prahova valley, without pointing to a sharp location.
- „Prahova” station – surroundings of the „Prahova” railway station, near Tinosu village, Prahova County (MK 26).
- Putna, Mera – along Putna valley, near the village Mera, Vrancea County (ML 96).
- Putna, Odobești – along Putna valley, within the range of the Odobești town, Vrancea County (NL 06).
- Putna, Păulești – along Putna valley, near the village Păulești, Vrancea County (ML 78).
- Putna, Vidra – along Putna valley, near the village Vidra, Vrancea County (ML 98).
- Putna, Vârteșcoiu – along Putna valley, near the village Vârteșcoiu, Vrancea County (NL 06).
- Sihlea – village in the Vrancea County (NL 03/13).
- Sinaia – small town in the Prahova County (LL 81/82).
- Sinaia, Bucegi Mountains – it refers to collecting made on the slopes of Bucegi Mountains, within the range of the Sinaia town, Prahova County.
- Sinaia, Valea Largă – on Valea Largă, a right side tributary of Prahova river, about 3 km South of the town of Sinaia, Prahova County.
- Slănic-Moldova – small town in the Bacău County (MM 51).
- Târgu Ocna – small town in the Bacău County (MM 62/72).
- Tinoasa – village in the Vrancea County (ML 95).
- Valea Călugărească – village in the Prahova County (MK 37).

List of galligen species

Phylum Nematoda
 Class Secernentea
 Order Tylenchida
 Family Anguinidae

Anguina agrostis (Steinbuch, 1799) – Neamț Monastery, VII.1912, on *Phleum phleoides* (L.) H. Karst (herbarium sheet no. 77).

Phylum Arthropoda
Class Arachnida
Order Prostigmata
Family Eriophyidae

Acalitus brevitarsus (Fockeu, 1890) – Câmpina, VII.1907, on *Alnus glutinosa* (L.) Gaertn. (herbarium sheet no. 119); Slănic-Moldova, VII.1910, on *Alnus incana* (L.) Moench. (herbarium sheet no. 237).

Acalitus stenaspis (Nalepa, 1891) – Dălhăuți, V.1912, on *Fagus sylvatica* L. (herbarium sheet no. 124); Slănic-Moldova, VII.1911, on *Fagus sylvatica* L. (herbarium sheet no. 262).

Aceria artemisiae (Canestrini, 1891) – Neamț Monastery, VII.1914, on *Artemisia vulgaris* L. (herbarium sheet no. 18).

Aceria brevirostris (Nalepa, 1892) – Durău, VIII.1914, on *Polygala vulgaris* L. (herbarium sheet no. 239).

Aceria campestricola (Frauenfeld, 1865)¹ – Sihlea, VI.1913, on *Ulmus laevis* Pall. (herbarium sheet no. 115); Sihlea, VI.1913, on *Ulmus minor* Mill. (herbarium sheet no. 114).

Aceria carinifex (Kieffer, 1902)² – Slănic-Moldova, VII.1910, on *Acer campestre* L. (herbarium sheet no. 220).

Aceria carvi (Nalepa, 1895)³ – Neamț Monastery, VIII.1910, on *Carum carvi* L. (herbarium sheet no. 141).

Aceria centaureae (Nalepa, 1891) – Chitila, IX.1912, on *Centaurea scabiosa* L. (herbarium sheet no. 234); Hanu Conachi, VI.1914, on *Centaurea arenaria* M. Bieb. ex Willd. (herbarium sheet no. 233); Neamț Monastery, VIII.1914, on *Centaurea phrygia* L. (herbarium sheet no. 235).

Aceria cerrea (Nalepa, 1898) – Ciocănești, VI.1912, on *Quercus cerris* L. (herbarium sheet no. 130).

Aceria chondrillae (G. Canestrini, 1891) – Ciocănești, IX.1910, on *Chondrilla juncea* L. (herbarium sheet no. 111).

Aceria convolvuli (Nalepa, 1898) – Murfatlar, VI.1916, on *Convolvulus arvensis* L. (herbarium sheet no. 227).

Aceria dispar (Nalepa, 1891) – Buluc (Putna), VI.1912, on *Populus tremula* L. (herbarium sheet no. 7).

Aceria drabae (Nalepa, 1890) – Comana, VI.1912, on *Camelina microcarpa* Andr. ex DC. (herbarium sheet no. 112); Sihlea, VI.1912, on *Cardaria draba* (L.) Desv. (herbarium sheet no. 113).

Aceria echii (G. Canestrini, 1891) – Neamț Monastery, VIII.1918, on *Echium vulgare* L. (herbarium sheet no. 14).

Aceria euaspis (Nalepa, 1892) – Cotești, IX.1910, on *Lotus corniculatus* L. (herbarium sheet no. 126).

Aceria eutricha (Nalepa, 1894) – Barboși, VI.1912, on *Lappula squarrosa* (Retz.) Dumort. (herbarium sheet no. 1).

¹ syn. *Phytoptus brevipunctata* Nalepa, 1889, *Eriophyes ulmicola* Nalepa, 1909.

² Identified as *Eriophyes macrochelus* Nalepa, 1891 var. *carnifex* (sic !) Kieffer by Dr. Marcel Brândză.

³ Identified as *Eriophyes peucedani* G. Canestrini, 1891 var. *carvi* Nalepa, 1895 by Dr. Marcel Brândză.

Aceria fraxini (Garman, 1883)¹ – Neamț Monastery, VIII.1910, on *Fraxinus excelsior* L. (herbarium sheet no. 13).

Aceria galiobia (Canestrini, 1891) – Neagră forest, VI.1912, on *Galium glaucum* L. (herbarium sheet no. 8); Neamț Monastery, VIII.1915, on *Galium schultesii* Vest. (herbarium sheet no. 249).

Aceria geranii (G. Canestrini, 1891) – Cotești, IX.1912, on *Lavatera thuringiaca* L. (herbarium sheet no. 128); Neamț Monastery, VIII.1919, on *Geranium palustre* L. („var. ?”; herbarium sheet no. 38).

Aceria heteronyx (Nalepa, 1891) – Slănic-Moldova, IX.1909, on *Acer campestre* L. (herbarium sheet no. 219).

Aceria hippophaena (Nalepa, 1898) – Câmpina, IX.1911, on *Hippophae rhamnoides* L. (herbarium sheet no. 123).

Aceria labiatiflorae (Thomas, 1872)² – Odobasca, IX.1913, on *Origanum vulgare* L. (herbarium sheet no. 2).

Aceria laticincta (Nalepa, 1892) – Odobasca, IX.1911, on *Lysimachia vulgaris* L. (herbarium sheet no. 116).

Aceria lycopersici (Wolffenstein, 1879)³ – Măriuța, IX.1910, on *Solanum dulcamara* L. (herbarium sheet no. 226).

Aceria macrochela (Nalepa, 1891) – Slănic-Moldova, VIII.1907, on *Acer campestre* L. (herbarium sheet no. 221); Slănic-Moldova, VII.1908, on *Acer pseudoplatanus* L. („typica Nalepa” – see figures no. 1 and 2; herbarium sheet no. 121).

Aceria macrocheluserinea (Trotter, 1902) – Sinaia, Bucegi Mountains, VIII.1914, on *Acer platanooides* L. (herbarium sheet no. 223); Slănic-Moldova, VII.1908, on *Acer campestre* L. (herbarium sheet no. 218).

Aceria macrorhyncha (Nalepa, 1889) – Buluc (Putna), VI.1912, on *Acer campestre* L. (herbarium sheet no. 109); Letea, VI.1920, on *Acer tataricum* L. (herbarium sheet no. 224); Slănic-Moldova, VII.1907, on *Acer pseudoplatanus* L. (herbarium sheet no. 222).

Aceria maculifer (Trotter & Cecconi, 1904)⁴ – Sinaia, VI.1912, on *Fagus sylvatica* L. (herbarium sheet no. 125).

Aceria megacera (Canestrini & Massalongo, 1893) – Cernica, IX.1912, on *Mentha aquatica* L. (herbarium sheet no. 107); Odobasca, IX.1911, on *Mentha longifolia* (L.) Huds. (herbarium sheet no. 215).

Aceria mentharia (Canestrini, 1890) – Cernica, IX.1918, on *Mentha aquatica* L. (herbarium sheet no. 108).

Aceria nalepai (Fockeu, 1890) – Prahova, VI.1910, on *Alnus glutinosa* (L.) Gaertn. (herbarium sheet no. 118).

Aceria nervisequa (Canestrini, 1891) – Putna, Mera, VI.1912, on *Fagus sylvatica* L. (herbarium sheet no. 24).

Aceria ononidis (Canestrini, 1890) – Odobasca, IX.1912, on *Ononis spinosa* L. (herbarium sheet no. 127).

Aceria peucedani (Canestrini, 1892) – Comana, VI.1910, on *Tordylium maximum* L. (herbarium sheet no. 9); Comana, VI.1910, on *Torilis japonica* (Houtt.)

¹ syn. *Eriophyes fraxinicola* Nalepa, 1890.

² Identified as *Eriophyes thomasi* Nalepa, 1889 var. *origani* Nalepa, 1891 by Dr. Marcel Brândză.

³ Identified as *Eriophyes cladophthirus* Nalepa, 1892 by Dr. Marcel Brândză.

⁴ Identified as *Eriophyes nervisequus* G. Canestrini, 1891 var. *maculifer* Trotter, 1904 by Dr. Marcel Brândză.

DC. (herbarium sheet no. 257); Posada, VII.1912, on *Cnidium silaifolium* (Jacq.) Simonk. (herbarium sheet no. 203); Târgu Ocna, VII.1910, on *Torilis arvensis arvensis* (Huds.) Link (herbarium sheet no. 204).

Aceria plicator (Nalepa, 1890) – Neamț Monastery, VII.1914, on *Trifolium elegans* Savi (2 samples, herbarium sheet no. 11).

Aceria quercina (Canestrini, 1891) – Buluc (Putna), VI.1910, on *Quercus petraea* (Matt.) Liebl. (herbarium sheet no. 216).

Aceria salviae (Nalepa, 1891) – Valea Călugărească, V.1906, on *Salvia × sylvestris* L. (herbarium sheet no. 102).

Aceria sanguisorbae (Canestrini, 1892) – Comana, V.1917, on *Sanguisorba minor* Scop. ssp. *muricata* Briq. (herbarium sheet no. 208).

Aceria tenella (Nalepa, 1892) – Oglinzi, VIII.1916, on *Carpinus betulus* L. (herbarium sheet no. 23).

Aceria tenuis (Nalepa, 1891) – Comana, VI.1910, on *Bromus commutatus* Schrad. (herbarium sheet no. 10); Neamț Monastery, VII.1911, on *Bromus hordeaceus* L. ssp. *hordeaceus* L. (herbarium sheet no. 105).

Aceria thomasi (Nalepa, 1889) – Adjud, VII.1907, on *Thymus pannonicus* All. (herbarium sheet no. 212); Sinaia, Bucegi Mountains, VII.1905, on *Thymus pulegioides* L. (herbarium sheet no. 213); Sinaia, Bucegi Mountains, VII.1911, on *Micromeria marginata* (Sm.) Chater (herbarium sheet no. 210); Slănic-Moldova, VII.1912, on *Thymus alpestris* Tausch ex A. Kern. (herbarium sheet no. 211).

Aceria trifolii (Nalepa, 1892)¹ – Neamț Monastery, VII.1914, on *Trifolium pratense* L. (herbarium sheet no. 229).

Aceria tristriata (Nalepa, 1890) – Focșani, VI.1915, on *Juglans regia* L. (herbarium sheet no. 19); Târgu Ocna, VII.1908, on *Juglans regia* L. (herbarium sheet no. 122).

Aceria tuberculata (Nalepa, 1891) – Cotești, VI.1910, on *Tanacetum vulgare* L. (herbarium sheet no. 236).

Aculops allotrichus (Nalepa, 1894)² – Chitila, VI.1912, on *Robinia pseudacacia* L. (herbarium sheet no. 131).

Aculops macrotrichus (Nalepa, 1889) – Comana, VI.1912, on *Carpinus betulus* L. (herbarium sheet no. 20).

Aculus anthobius (Nalepa, 1892) – Neamț Monastery, VIII.1912, on *Galium schultesii* Vest. (herbarium sheet no. 252); Odobasca, IX.1911, on *Galium verum* L. (herbarium sheet no. 251); „Prahova” station, IX.1911, on *Galium humifusum* M. Bieb. (herbarium sheet no. 253).

Aculus coronillae (Canestrini & Massalongo, 1893) – Comana, VI.1910, on *Coronilla varia* L. (herbarium sheet no. 27).

Aculus epiphyllus (Nalepa, 1892) – Comana, V.1912, on *Fraxinus excelsior* L. (herbarium sheet no. 29).

Aculus hippocastani (Fockeu, 1890) – Oglinzi, VIII.1914, on *Aesculus hippocastanum* L. (herbarium sheet no. 25).

Aculus minutus (Nalepa, 1890) – Odobasca, IX.1911, on *Asperula cynanchica* L. (herbarium sheet no. 254).

Aculus retiolatus (Nalepa, 1892) – Cotești, VI.1912, on *Vicia tenuifolia* Roth. (herbarium sheet no. 28).

¹ Identified as *Eriophyes plicator* Nalepa, 1890 var. *trifolii* Nalepa, 1892 by Dr. Marcel Brândză.
² syn. *Phyllocoptes robiniae* Nalepa, 1894.

Aculus schmardae (Nalepa, 1889) – Asău, VIII.1909, on *Campanula sibirica* L. ssp. *divergentifformis* (Jáv.) Domin. (herbarium sheet no. 22); Comana, VI.1912, on *Campanula macrostachya* Waldst. & Kit. ex Willd. (herbarium sheet no. 232); Medgidia, VI.1916, on *Campanula bononiensis* L. (herbarium sheet no. 228); Posada, VII.1912, on *Campanula rapunculoides* L. (herbarium sheet no. 238).

Aculus scutellariae (Canestrini & Massalongo, 1895) – Comănești, VIII.1911, on *Scutellaria hastifolia* L. (herbarium sheet no. 26).

Aculus teucrii (Nalepa, 1892) – Chitila, VI.1911, on *Teucrium chamaedrys* L. (herbarium sheet no. 256).

Aculus xylostei (Canestrini, 1892) – Sinaia, VIII.1905, on *Lonicera xylosteum* L. (herbarium sheet no. 15).

Cecidophyes galii (Karpelles, 1884) – Adjud, VII.1907, on *Galium humifusum* M. Bieb. (herbarium sheet no. 248); Comana, VI.1912, on *Galium mollugo* L. (herbarium sheet no. 247); Neamț, VII.1914, on *Galium rivale* (Sibth. & Sm.) Griseb. (herbarium sheet no. 132); Neamț Monastery, VIII.1915, on *Galium schultesii* Vest. (herbarium sheet no. 250); Slănic-Moldova, VII.1911, on *Galium aparine* L. (herbarium sheet no. 244); Slănic-Moldova, VII.1911, on *Galium mollugo* L. (herbarium sheet no. 246); Slănic-Moldova, VII.1911, on *Galium verum* L. (herbarium sheet no. 245).

Cecidophyes nudus Nalepa, 1891 – Hanu Conachi, VI.1914, on *Geum urbanum* L. (herbarium sheet no. 205); Sinaia, VIII.1913, on *Geum aleppicum* Jacq. (herbarium sheet no. 5).

Cecidophyes psilonotus (Nalepa, 1897) – Crângu forest, IV.1914, on *Euonymus verrucosus* Scop. (herbarium sheet no. 16).

Cecidophyopsis betulae (Nalepa 1891) – Slănic-Moldova, VIII.1911, on *Betula pendula* Roth. (herbarium sheet no. 202).

Colomerus vitis (Pagenstecher, 1857)¹ – București, VIII.1915, on *Vitis vinifera* L. (herbarium sheet no. 230).

Epitimerus pyri (Nalepa, 1891) – Odobasca, IX.1911, on *Pyrus communis* L. (herbarium sheet no. 30).

Epitimerus trilobus (Nalepa, 1891) – Slănic-Moldova, VII.1911, on *Sambucus nigra* L. (herbarium sheet no. 31).

Eriophyes diversipunctatus (Nalepa, 1890) – Slănic-Moldova, VI.1910, on *Populus tremula* L. (herbarium sheet no. 6).

Eriophyes laevis (Nalepa, 1889) – „Prahova” station, VII.1911, on *Alnus glutinosa* (L.) Gaertn. (herbarium sheet no. 117); Slănic-Moldova, VII.1906, on *Alnus incana* (L.) Moench. (herbarium sheet no. 231).

Eriophyes pteridis (Molliard, 1898) – Slănic-Moldova, VII.1910, on *Pteridium aquilinum* (L.) Kuhn (herbarium sheet no. 201).

Eriophyes pyri (Pagenstecher, 1857) – Bacău, VI.1905, on *Malus sylvestris* Mill. (herbarium sheet no. 207); Comana, VI.1914, on *Sorbus torminalis* (L.) Crantz (herbarium sheet no. 106); Cotești, VI.1912, on *Cydonia oblonga* Mill. (herbarium sheet no. 209); Sinaia, VIII.1905, on *Sorbus aucuparia* L. („var. *variolata* Nalepa, 1892”); herbarium sheet no. 4); Slănic-Moldova, VII.1910, on *Pyrus communis* L. (herbarium sheet no. 103).

¹ syn. *Phytoptus vitis* Landois, 1864.

Eriophyes similis (Nalepa, 1890) – Cotești, VI.1910, on *Prunus spinosa* L. (herbarium sheet no. 110).

Eriophyes tiliae tiliae (Pagenstecher, 1857) – Slănic-Moldova, VII.1911, on *Tilia cordata* Mill. (herbarium sheet no. 240); Slănic-Moldova, VII.1912, on *Tilia tomentosa* Moench. (herbarium sheet no. 214).

Eriophyes tiliae liosoma (Nalepa, 1892)¹ – Pantelimon, V.1913, on *Tilia × vulgaris* Hayne (herbarium sheet no. 242); Putna, Vidra, VI.1911, on *Tilia × vulgaris* Hayne (herbarium sheet no. 243); Slănic-Moldova, VII.1910, on *Tilia cordata* Mill. (herbarium sheet no. 241).

Phyllocoptes eupadi (Newkirk, 1984)² – Breaza de Jos, VII.1906, on *Prunus domestica* L. ssp. *insititia* (L.) C. K. Schneid. (herbarium sheet no. 225); Neamț, VIII.1914, on *Prunus spinosa* L. (herbarium sheet no. 206).

Phyllocoptes goniothorax (Nalepa, 1889) – Sinaia, VIII.1907, on *Crataegus monogyna* Jacq. (herbarium sheet no. 3).

Phyllocoptes malinus (Nalepa, 1892) – Neamț Monastery, VIII.1914, on *Malus sylvestris* Mill. (herbarium sheet no. 12).

Phyllocoptes populi (Nalepa, 1894) – Gugești, V.1912, on *Populus tremula* L. (herbarium sheet no. 217); „Prahova” station, IX.1911, on *Populus alba* L. (herbarium sheet no. 101); Sinaia, Valea Largă, VII. 1905, on *Populus tremula* L. (herbarium sheet no. 255).

Phyllocoptes tenuirostris (Nalepa, 1896) – Chitila, VI.1910, on *Artemisia absinthium* L. (herbarium sheet no. 21).

Stenacis euonymi (Frauenfeld 1865)³ – Sihlea, VI.1913, on *Euonymus europaeus* L. (herbarium sheet no. 17).

Unidentified Eriophyid mites – Babele forest, V.1911, on *Acer campestre* L. (herbarium sheet no. 133); Chitila, IX.1911, on *Artemisia austriaca* Jacq. (herbarium sheet no. 265); Cotești, VI.1908, on *Phlomis pungens* Willd. (herbarium sheet no. 34); Cotești, VI.1911, on *Artemisia pontica* L. (herbarium sheet no. 266); Durău, VIII.1915, on *Scabiosa ochroleuca* L. (herbarium sheet no. 268); Faraoni, VI.1914, on *Viola reichenbachiana* Jord. ex Boreau (herbarium sheet no. 263); Murfatlar, VI.1916, on *Echinops ritro* L. ssp. *ruthenicus* (M. Bieb.) Nyman (herbarium sheet no. 35); Neamț Monastery, VIII.1914, on *Campanula cervicaria* L. (herbarium sheet no. 37); Neamț Monastery, VIII.1914, on *Verbascum nigrum* L. (herbarium sheet no. 36); „Prahova” station, VI.1910, on *Conium maculatum* L. (herbarium sheet no. 33); „Prahova” station, IX.1910, on *Pastinaca sativa* L. (herbarium sheet no. 187); Slănic-Moldova, VIII.1910, on *Scrophularia nodosa* L. (herbarium sheet no. 32); Putna, Vârteșcoiu, VI.1914, on *Alliaria officinalis* Andrzej. ex M. Bieb (herbarium sheet no. 258); Putna, Vârteșcoiu, VI.1914, on *Viburnum lantana* L. (herbarium sheet no. 264); Sinaia, Valea Largă, VIII. 1907, on *Crataegus monogyna* Jacq. (herbarium sheet no. 260); Slănic-Moldova, VIII.1910, on *Verbascum phlomooides* L. (herbarium sheet no. 261); Tinoasa, IX.1911, on *Acer campestre* L. (herbarium sheet no. 259); Valea Călugărească, V.1907, on *Galium rubioides* L. (herbarium sheet no. 267).

¹ We follow the view of several authors (Bayer, 1914; Buchta & al., 2005), considering *liosoma* (Nalepa, 1892) as a valid subspecies of *Eriophyes tiliae* (Pagenstecher, 1857).

² syn. *Phytoptus padi* Nalepa, 1890.

³ syn. *Eriophyes convolvens* Nalepa, 1892.

Family Phytoptidae

Fragariocoptes setiger (Nalepa, 1894) – Valea Călugărească, V.1907, on *Fragaria viridis* Duchesne (herbarium sheet no. 129).

Phytoptus avellanae Nalepa, 1889 – Făraoani, VI.1912, on *Corylus avellana* L. (herbarium sheet no. 120).

Class Insecta
Order Hemiptera
Family Aphididae

Aphis (Aphis) viburni Scopoli, 1763 – Comănești, VIII.1912, on *Viburnum opulus* L. (herbarium sheet no. 180).

Brachycolus stellariae (Hardy, 1850) – Slănic-Moldova, VII.1911, on *Stellaria holostea* L. (herbarium sheet no. 197).

Cryptosiphum artemisiae Buckton, 1879 – Cotești, VI.1912, on *Artemisia vulgaris* L. (herbarium sheet no. 92).

Eriosoma lanuginosum (Hartig, 1839) – Cotești, VI.1911, on *Ulmus minor* Mill. (herbarium sheet no. 174).

Eriosoma ulmi ulmi (Linnaeus, 1758) – Putna, Vidra, VI.1910, on *Ulmus minor* Mill. (herbarium sheet no. 173).

Hayhurstia atriplicis atriplicis (Linnaeus, 1761) – Adjud, VII.1907, on *Atriplex patula* L. (herbarium sheet no. 181).

Hyalopterus pruni (Geoffroy, 1762) – Cotești, V.1913, on *Prunus domestica* L. (herbarium sheet no. 188).

Myzus (Myzus) cerasi cerasi (Fabricius, 1775) – Cotești, V.1913, on *Prunus domestica* L. (herbarium sheet no. 188).

Myzus (Myzus) oxyacanthae (Koch, 1856) – Bacău, VI.1913, on *Malus sylvestris* Mill. (herbarium sheet no. 135).

Myzus (Nectarosiphon) myosotidis (Börner 1950) – București, VI.1910, on *Conyza canadensis* (L.) Cronquist (herbarium sheet no. 192).

Pemphigus (Pemphigus) bursarius (Linnaeus, 1758)¹ – București, VI.1909, on *Populus pyramidalis* Rozier (herbarium sheet no. 171).

Pemphigus (Pemphigus) marsupialis (Courchet, 1879) – Adjud, V.1910, on *Populus nigra* L. (herbarium sheet no. 93).

Pemphigus (Pemphigus) spyrothecae Passerini, 1860 – Adjud, VI.1911, on *Populus nigra* L. (herbarium sheet no. 177).

Tetraneura (Tetraneura) caerulescens (Passerini, 1856) – Sihlea, VI.1915, on *Ulmus minor* Mill. (herbarium sheet no. 96).

Tetraneura (Tetraneura) ulmi (Linnaeus, 1758) – Comana, V.1907, on *Ulmus minor* Mill. (herbarium sheet no. 100).

Thecabius (Thecabius) affinis (Kaltenbach, 1843) – București, V.1905, on *Populus pyramidalis* Rozier (herbarium sheet no. 179).

Family Psyllidae

Camarotoscena speciosa (Flor, 1861) – Adjud, VI.1911, on *Populus nigra* L. (herbarium sheet no. 178).

¹ syn. *Pemphigus pyriformis* (Lichtenstein, 1885).

Livia junci (Schrank, 1789) – Neamț Monastery, VIII.1914, on *Juncus articulatus* L. (herbarium sheet no. 97).

Psyllopsis fraxini (Linnaeus, 1758) – Comana, V.1911, on *Fraxinus excelsior* L. (herbarium sheet no. 99).

Family Tingidae

Copium teucree (Host, 1788) – Medgidia, VI.1914, on *Teucrium polium* L. (herbarium sheet no. 76).

Family Triozidae

Trichohermes walkeri (Förster, 1848) – Sihlea, VI.1910, on *Rhamnus catharticus* L. (herbarium sheet no. 98).

Trioza cerastii (Linnaeus, 1758) – Slănic-Moldova, VI.1911, on *Cerastium vulgare* Hartm. (herbarium sheet no. 196).

Unidentified plant lices – Bahana, VI.1914, on *Glechoma hirsuta* Waldst. & Kit. (herbarium sheet no. 193); Neamț Monastery, VII.1910, on *Filipendula ulmaria* (L.) Maxim. ssp. *ulmaria* (herbarium sheet no. 176).

Order Hymenoptera

Family Cynipidae

Andricus gemmeus (Giraud, 1859)¹ – Comana, VIII.1911, on *Quercus petraea* (Matt.) Liebl. (herbarium sheet no. 84).

Andricus solitarius (Fonscolombe, 1832) – Buluc (Putna), VIII.1910, on *Quercus petraea* (Matt.) Liebl. (herbarium sheet no. 86).

Aulacidea hieracii (Bouché, 1834) – Murfatlar, VI., on *Hieracium virosum* Pall. (herbarium sheet no. 159); Neamț Monastery, VI.1913, on *Hieracium umbellatum* L. (herbarium sheet no. 294).

Aulacidea tragopogonis (Thomson, 1877) – Cotești, VI.1910, on *Tragopogon pratensis* L. ssp. *orientalis* (L.) C Kelak. (herbarium sheet no. 297).

Biorhiza pallida (Olivier, 1791) – Buluc (Putna), IV.1912, on *Quercus petraea* (Matt.) Liebl. (herbarium sheet no. 172).

Chilaspis nitida (Giraud, 1859) – Buftea, VI.1909, on *Quercus cerris* L. (herbarium sheet no. 167).

Cynips agama Hartig, 1840 – Neamț, VII.1912, on *Quercus petraea* (Matt.) Liebl. (herbarium sheet no. 87).

Cynips longiventris Hartig, 1840 – Neamț Monastery, VII.1912, on *Quercus robur* L. (herbarium sheet no. 169).

Cynips quercus (Fourcroy, 1785)² – Comana, VIII.1911, on *Quercus robur* L. (herbarium sheet no. 170).

Diplolepis eglanteriae (Hartig, 1840) – Cotești, V.1909, on *Rosa gallica* L. (herbarium sheet no. 81).

Diplolepis spinosissimae (Giraud, 1859) – Comarnic, VII.1909, on *Rosa alpina* L.³ (herbarium sheet no. 162).

¹ syn. *Andricus kirchsbergi* Wachtl, 1876.

² syn. *Dryophanta folii* auct.

³ syn. *Rosa adenophora* Kitaibel.

Liposthenes glechomae (Linnaeus, 1758)¹ – Sihlea, VI.1911, on *Glechoma hirsuta* Waldst. & Kit. (herbarium sheet no. 160).

Liposthenes keneri (Wachtl, 1891) – Neamț Monastery, VIII.1914, on *Nepeta nuda* L. (herbarium sheet no. 80).

Neaylax salviae (Giraud, 1859) – Cotești, VI.1912, on *Salvia* × *sylvestris* L. (herbarium sheet no. 282).

Neuroterus lanuginosus Giraud, 1859 – Comana, IX.1910, on *Quercus cerris* L. (herbarium sheet no. 85).

Neuroterus quercusbaccarum (Linnaeus, 1758) – Faraoni, IV.1915, on *Quercus petraea* (Matt.) Liebl. (herbarium sheet no. 83).

Panteliella fedtschenkoi (Rübsaamen 1896) – Cotești, V.1911, on *Phlomis tuberosa* L. (herbarium sheet no. 79).

Unidentified gall wasps – Hanu Conachi, VI.1912, on *Astragalus varius* S. G. Gmel. (herbarium sheet no. 88); Sihlea, VI.1910, on *Astragalus glycyphyllos* L. (herbarium sheet no. 89).

Family Tenthredinidae

Blennocampa phyllocolpa Viitasaari & Vikberg, 1985² – Neamț, VI.1914, on *Rosa bisserata* Merat. (herbarium sheet no. 95).

Order Coleoptera Family Apionidae

Pseudoprotapion astragali (Paykull, 1800) – Hanu Conachi, VI.1912, on *Astragalus varius* S. G. Gmel. (herbarium sheet no. 88).

Family Curculionidae

Dorytomus (Olamus) villosulus (Gyllenhal, 1836) – Comana, VI.1912, on *Veronica anagallis-aquatica* L. (herbarium sheet no. 74).

Rhinusa smreczynskii (Fremuth, 1972)³ – Comana, VI.1914, on *Linaria genistifolia* (L.) Mill. (herbarium sheet no. 75).

Order Lepidoptera Family Momphidae

Mompha (Mompha) divisella Herrich-Schäffer, 1854 – Slănic-Moldova, VIII.1910, on *Epilobium angustifolium* L. (herbarium sheet no. 285).

Family Nepticulidae

Ectoedemia (Ectoedemia) turbidella (Zeller, 1848) – Prahova, IX.1911, on *Populus alba* L. (herbarium sheet no. 90).

Unidentified moth – Odobasca, IX.1913, on *Tanacetum vulgare* L. (herbarium sheet no. 91).

¹ syn. *Aylax latreillei* (Kieffer, 1898).

² syn. *Tenthredo pusilla* (Klug, 1814).

³ syn. *Gymnetron florum* Rübsaamen, 1895 (Caldera, 2008).

Order Diptera
Family Anthomyiidae

Chirosia betuleti (Ringdahl, 1935)¹ – Slănic-Moldova, VII.1907, on *Athyrium filix-femina* (L.) Roth. (herbarium sheet no. 283); Slănic-Moldova, VII.1907, on *Dryopteris filix-mas* (L.) Schott (herbarium sheet no. 284).

Family Cecidomyiidae

Ametrodiplosis thalicticola (Rübsaamen, 1895) – Neamț Monastery, VIII.1910, on *Thalictrum flexuosum* Bernh. (herbarium sheet no. 151); Neamț Monastery, VIII.1912, on *Thalictrum lucidum* L. (herbarium sheet no. 78); Neamț Monastery, VII.1914, on *Thalictrum lucidum* L.² (herbarium sheet no. 278).

Asphondylia menthae Kieffer, 1902 – Fundeni, IX.1911, on *Mentha longifolia* (L.) Huds. (herbarium sheet no. 287).

Asphondylia verbasci (Vallot, 1827) – Comana, VI.1912, on *Verbascum orientale* (L.) All. (herbarium sheet no. 194); Neamț Monastery, VIII.1910, on *Verbascum speciosum* Schrad. (herbarium sheet no. 54); Odobasca, IX.1911, on *Verbascum phlomoides* L. (herbarium sheet no. 269); Sinaia, Bucegi Mountains, VII.1912, on *Verbascum lychnitis* L. (herbarium sheet no. 271); Slănic-Moldova, VII.1910, on *Verbascum nigrum* L. (herbarium sheet no. 270).

Asphondylia sp. – Breaza de Jos, VII.1912, on *Coronilla varia* L. (herbarium sheet no. 190).

Cecidomyia sp.³ – Slănic-Moldova, VIII.1912, on *Acer pseudoplatanus* L. (herbarium sheet no. 185).

Contarinia campanulae (Kieffer, 1895) – Neamț Monastery, VII.1912, on *Campanula rapunculoides* L. (herbarium sheet no. 143).

Contarinia craccae Loew, 1850 – Putna, Vidra, VI.1920, on *Vicia cassubica* L. (herbarium sheet no. 58).

Contarinia loti (De Geer, 1776) – Neamț Monastery, VIII.1914, on *Lotus corniculatus* L. (herbarium sheet no. 56).

Contarinia medicaginis Kieffer, 1895 – Mangalia, VI.1916, on *Medicago sativa* L. ssp. *falcata* (L.) Arcang. (herbarium sheet no. 55).

Contarinia melanocera Kieffer, 1904 – Mănești, VI.1915, on *Genista tinctoria* L. (herbarium sheet no. 149).

Contarinia nasturtii (Kieffer, 1888)⁴ – Adjud, VI.1908, on *Sisymbrium loeselii* L. (herbarium sheet no. 57); Focșani, VI.1913, on *Sisymbrium officinale* (L.) Scop. (herbarium sheet no. 289); Galați, VI.1910, on *Descurainia sophia* (L.) Webb ex Prantl (herbarium sheet no. 288).

Contarinia petioli (Kieffer, 1898) – Sinaia, VII.1911, on *Populus tremula* L. (herbarium sheet no. 39).

Craneiobia corni (Giraud, 1863) – „Prahova” station, IX.1911, on *Cornus sanguinea* L. (herbarium sheet no. 144).

Cystiphora sonchi (Vallot, 1827) – Odobasca, VIII.1911, on *Sonchus arvensis* L. (herbarium sheet no. 195).

¹ syn. *Anthomyia signata* Brischke, 1888.

² identified as *Thalictrum peucedanifolium* Griseb. & Schenk.

³ syn. *Diplosis* sp.

⁴ syn. *Contarinia ruderalis* Kieffer, 1890.

Dasineura affinis (Kieffer, 1886) – „Prahova” station, IX.1911, on *Viola elatior* Fr. (herbarium sheet no. 51).

Dasineura asperulae (F. Löw, 1875) – Barboși, VI.1910, on *Asperula cynanchica* L. (herbarium sheet no. 290).

Dasineura corniculata (Kieffer, 1909) – Bușteni, VIII.1909, on *Lamium maculatum* L. (herbarium sheet no. 153).

Dasineura crataegi (Winnertz, 1853) – Odobasca, IX.1912, on *Crataegus monogyna* Jacq. (herbarium sheet no. 134).

Dasineura epilobii (F. Löw, 1889) – Sinaia, Valea Largă, VII.1912, on *Epilobium angustifolium* L. (herbarium sheet no. 52).

Dasineura lamii (Kieffer, 1909) – Sinaia, VIII.1910, on *Lamium maculatum* L. (herbarium sheet no. 152).

Dasineura lithospermi (Loew, 1850) – Slănic-Moldova, VII.1911, on *Lithospermum officinale* L. (herbarium sheet no. 198).

Dasineura medicaginis (Brems, 1847)¹ – Putna, Vidra, VI.1911, on *Medicago sativa* L. ssp. *falcata* (L.) Arcang. (herbarium sheet no. 147).

Dasineura pustulans (Rübsaamen, 1889) – Neamț Monastery, VIII.1914, on *Filipendula ulmaria* (L.) Maxim. ssp. *ulmaria* (L.) Maxim. (herbarium sheet no. 46).

Dasineura ranunculi (Brems, 1847) – Slănic-Moldova, VII.1911, on *Ranunculus polyanthemos* L. (herbarium sheet no. 182).

Dasineura serotina (Winnertz, 1853) – „Prahova” station, IX.1911, on *Hypericum hirsutum* L. (herbarium sheet no. 274).

Dasineura sisymbrii (Schrank, 1803) – Chitila, 1907, on *Rorippa austriaca* (Crantz) Besser (herbarium sheet no. 184).

Dasineura subpatula (Brems, 1847)² – Comana, VI.1910, on *Euphorbia nicaeensis* All. ssp. *glareosa* (Pall. ex M. Bieb.) Radcl.-Sm. (herbarium sheet no. 277); Neagră forest, VI.1910, on *Euphorbia cyparissias* L. (herbarium sheet no. 150); Slănic-Moldova, VII.1907, on *Euphorbia amygdaloides* L. (herbarium sheet no. 276).

Dasineura symphyti (Rübsaamen, 1892) – Neamț Monastery, VIII.1912, on *Symphytum officinale* L. (herbarium sheet no. 43).

Dasineura tortilis (Brems, 1847)³ – Slănic-Moldova, VIII.1910, on *Alnus glutinosa* (L.) Gaertn. (herbarium sheet no. 138).

Dasineura trifolii (F. Löw, 1874) – Valea Călugărească, V.1907, on *Trifolium alpestre* L. (herbarium sheet no. 146).

Dasineura ulmaria (Brems, 1847) – Neamț, VII.1912, on *Filipendula ulmaria* (L.) Maxim. ssp. *ulmaria* (L.) Maxim. (herbarium sheet no. 295); Neamț Monastery, VII.1916, on *Filipendula vulgaris* Moench (herbarium sheet no. 45).

Dasineura urticae (Perris, 1840) – Slănic-Moldova, VII.1907, on *Urtica dioica* L. (herbarium sheet no. 275).

Dasineura viciae (Kieffer, 1888) – Cotești, VI.1913, on *Vicia pannonica* Crantz (herbarium sheet no. 50); Sinaia, VII.1912, on *Vicia cracca* L. (herbarium sheet no. 148); Sinaia, Bucegi Mountains, VII.1907, on *Vicia sepium* L. (herbarium sheet no. 273).

Dasineura sp.⁴ – Cotești, VI.1913, on *Lathyrus montanus* Bernh. (herbarium sheet no. 49); Valea Călugărească, V.1907, on *Clematis recta* L. (herbarium sheet no. 53).

¹ syn. *Perrisia ignorata* (Wachtl, 1884).

² syn. *Dasineura euphorbiae* Loew, 1850.

³ syn. *Perrisia alni* (F. Löw, 1877).

⁴ syn. *Perrisia* sp.

Didymomyia tiliacea (Bremi, 1847)¹ – Făraoani, V.1914, on *Tilia* × *vulgaris* Hayne (herbarium sheet no. 62).

Dryomyia circinans (Giraud, 1861) – Buftea, VI.1910, on *Quercus cerris* L. (herbarium sheet no. 168).

Euphorbomyia loewii (Mik, 1882) – Putna, Odobești, VI.1912, on *Euphorbia seguierana* Neck. (herbarium sheet no. 47).

Geocrypta galii (Loew, 1850) – Sinaia, VII.1911, on *Galium schultesii* Vest. (herbarium sheet no. 199).

Harmandiola cavernosa (Rübsaamen, 1899) – Slănic-Moldova, on *Populus tremula* L. (herbarium sheet no. 40).

Harmandiola tremulae (Winnertz, 1853)² – Odobasca, IX.1911, on *Populus tremula* L. (herbarium sheet no. 41).

Hartigiola annulipes (Hartig, 1839) – Slănic-Moldova, VII.1911, on *Fagus sylvatica* L. (herbarium sheet no. 64).

Iteomyia capreae (Winnertz, 1853) – Neamț Monastery, VIII.1912, on *Salix cinerea* L. (herbarium sheet no. 189).

Jaapiella bryoniae (Bouché, 1847) – Putna, Păulești, VI.1912, on *Bryonia alba* L. (herbarium sheet no. 48).

Jaapiella veronicae (Vallot, 1827) – Slănic-Moldova, VII.1907, on *Veronica chamaedrys* L. (herbarium sheet no. 272).

Janetia cerris (Kollar, 1850) – Comana, VI.1908, on *Quercus cerris* L. (herbarium sheet no. 164).

Janetia homocera (F. Löw, 1877) – Comana, VI.1911, on *Quercus cerris* L. (herbarium sheet no. 165).

Janetia nervicola (Kieffer, 1909) – Comana, VI.1913, on *Quercus cerris* L. (herbarium sheet no. 166).

Janetia szepligetii Kieffer, 1896 – Putna, Vârteșcoiu, 1914, on *Acer tataricum* L. (herbarium sheet no. 63).

Kiefferia pericarpicola (Bremi, 1847)³ – Comana, VI.1910, on *Anthriscus sylvestris* (L.) Hoffm. (herbarium sheet no. 292); Neamț, VII.1912, on *Peucedanum carvifolia* Vill. (herbarium sheet no. 280); Neamț Monastery, VIII.1910, on *Pimpinella major* (L.) Huds. (herbarium sheet no. 142); Neamț Monastery, VIII.1912, on *Laserpitium latifolium* L. (herbarium sheet no. 60).

Kochiomyia kochiae (Kieffer, 1909) – Barboși, VI.1914, on *Bassia prostrata* (L.) A. J. Scott (herbarium sheet no. 59).

Lasioptera eryngii (Vallot, 1829) – Comana, VI.1909, on *Eryngium campestre* L. (herbarium sheet no. 163).

Lasioptera rubi (Schrank, 1803) – „Prahova” station, IX.1911, on *Rubus caesius* L. (herbarium sheet no. 161).

Macrodiplosis roboris (Hardy, 1854)⁴ – Comana, V.1910, on *Quercus robur* L. (herbarium sheet no. 82).

Macrolabis orobi (F. Löw, 1877) – Crângu forest, V.1913, on *Lathyrus aureus* (Steven) D. Brândza (herbarium sheet no. 175).

Mayetiola graminis (Fourcroy, 1785)⁵ – Sinaia, VII.1911, on *Poa nemoralis* L. (herbarium sheet no. 183).

¹ syn. *Oligotrophus reaumurianus* F. Loew, 1878.

² syn. *Harmandia loewi* Rübsaamen, 1892.

³ syn. *Asphondylia pimpinellae* F. Löw, 1874.

⁴ syn. *Macrodiplosis volvens* Kieffer, 1895 (Gagné, 2004).

⁵ syn. *Mayetiola poae* (Bosc, 1817).

Mikiola fagi (Hartig, 1839) – Slănic-Moldova, VII.1904, on *Fagus sylvatica* L. (herbarium sheet no. 286).

Neomikiella lychnidis (Vallot, 1827)¹ – Barboși, VI.1912, on *Silene otites* (L.) Wibel (herbarium sheet no. 44); Ciocănești, VI.1912, on *Silene dichotoma* Ehrh. (herbarium sheet no. 139).

Oligotrophus panteli Kieffer, 1898 – Slănic-Moldova, VII.1911, on *Juniperus communis* L. (herbarium sheet no. 65).

Phegomyia fagicola (Kieffer, 1901) – Slănic-Moldova, VIII.1908, on *Fagus sylvatica* L. (herbarium sheet no. 140).

Putoniella pruni (Kaltenbach, 1872)² – Sihlea, VI.1911, on *Prunus domestica* L. (herbarium sheet no. 94).

Rhopalomyia artemisiae (Bouché, 1834) – Filaret, IX.1910, on *Artemisia austriaca* Jacq. (herbarium sheet no. 291).

Rhopalomyia millefolii (Loew, 1850)³ – Hanu Conachi, VI.1915, on *Achillea ochroleuca* Ehrh. (herbarium sheet no. 68).

Rhopalomyia tanaceticola (Karsch, 1879) – Putna, Odobești, IX.1910, on *Tanacetum vulgare* L. (herbarium sheet no. 67).

Rhopalomyia tubifex (Bouché, 1847) – „Prahova” station, IX.1911, on *Artemisia campestris* L. (herbarium sheet no. 145).

Rhopalomyia sp. – Comana, IX.1912, on *Artemisia santonicum* L. (herbarium sheet no. 158); Doftana, VIII.1911, on *Artemisia campestris* L. (herbarium sheet no. 200).

Rondaniola bursaria (Bremi, 1847) – Sihlea, VI.1905, on *Glechoma hirsuta* Waldst. & Kit. (herbarium sheet no. 279).

Sackenomyia reaumurii (Bremi, 1847)⁴ – Buluc (Putna), VI.1910, on *Viburnum lantana* L. (herbarium sheet no. 61).

Spurgia euphorbiae (Vallot, 1827)⁵ – Neagră forest, VI.1913, on *Euphorbia cyparissias* L. (herbarium sheet no. 136).

Wachtliella stachydis (Bremi, 1847) – Sinaia, VIII.1912, on *Stachys sylvatica* L. (herbarium sheet no. 42).

Zeuxidiplosis giardi (Kieffer, 1896) – „Prahova” station, IX.1911, on *Hypericum perforatum* L. (herbarium sheet no. 281).

Unidentified gall midges – Barboși, VI.1910, on *Tanacetum millefolium* (L.) Tzvelev (herbarium sheet no. 300); Comana, V.1913, on *Hesperis sylvestris* Crantz (herbarium sheet no. 72); Cotești, VI.1913, on *Anchusa ochroleuca* M. Bieb. (herbarium sheet no. 298); Dadilov forest, V.1907, on *Dorycnium pentaphyllum* Scop. (herbarium sheet no. 155); Focșani, Putna, V.1910, on *Armoracia rusticana* P. Gaertn., B. Mey. & Scherb. (herbarium sheet no. 156); Neagră forest, VI.1912, on *Phlomis pungens* Willd. (herbarium sheet no. 70); Neamț Monastery, VII.1912, on *Chaerophyllum aromaticum* L. (herbarium sheet no. 299); Neamț Monastery, VIII.1912, on *Ferulago sylvatica* (Besser) Rchb. (herbarium sheet no. 157); „Prahova” station, VI.1910, on *Carex riparia* Curtis (herbarium sheet no. 73); Sihlea, VI.1912, on *Lathyrus hirsutus* L. (herbarium sheet no. 154); Sinaia, VIII.1910, on *Mentha longifolia* (L.) Huds. (herbarium sheet no. 71); Sinaia, Bucegi Mountains, VII.1912, on *Angelica sylvestris* L. var. *elatior* Whlb. (herbarium sheet no. 296); Slănic-Moldova, VII.1910, on *Abies alba* Mill. (herbarium sheet no. 69).

¹ syn. *Perrisia lychnidis* Heyden, 1861.

² syn. *Putoniella marsupialis* (F. Löw, 1889).

³ syn. *Rhopalomyia achilleae* Trotter, 1901.

⁴ syn. *Oligotrophus solmsii* Kieffer, 1905.

⁵ syn. *Perrisia capitigena* Bremi, 1847.

Family Tephritidae

Urophora cardui (Linnaeus, 1758) – Neamț Monastery, VI.1913, on *Cirsium arvense* (L.) Scop. (herbarium sheet no. 293); Neamț Monastery, VIII.1914, on *Cirsium arvense* (L.) Scop. (herbarium sheet no. 66).

Unidentified insect – Herăstrău, V.1907, on *Brassica napus* L. (herbarium sheet no. 186).

ACKNOWLEDGEMENTS

The author wishes to thank to the anonymous referees for their valuable and helpful comments on the manuscript. My gratitude goes also to my colleagues Mihaela Achim-Barcan, for kindly and carefully revising the English version of this catalogue, and to Mr. George Năzăreanu, for producing the pictures illustrating this catalogue.

CATALOGUL HERBARULUI DE ZOOCECIDII "DR. MARCEL BRÂNDZĂ" DE LA
MUZEUL NAȚIONAL DE ISTORIE NATURALĂ "GRIGORE ANTIPA"
(BUCUREȘTI)

REZUMAT

Herbarul de zoocecidii "Dr. Marcel Brândză", conservat la Muzeul Național de Istorie Naturală "Grigore Antipa" din București, cuprinde 301 eşantioane vegetale uscate cu cecidii produse de un număr de circa 200 specii de organisme galigene. Catalogul acestei colecții este o sursă consistentă de date faunistice și floristice pentru România, chiar dacă au caracter istoric, toate exemplarele fiind colectate în diferite localități din țară.

LITERATURE CITED

- BAYER, E., 1914 - Moravské háčky (Zooecidia). Zpravy komm. pro prirod. prozk. Moravy, odd. zool., Brno, 15: 1-182. (in Czech)
- BRÂNDZĂ, M., 1889 - Sur l'anatomie et le développement des téguments de la graine chez les Géraniacées, Lythariées et Oenothérées. Bulletin Trimestriel de la Société Botanique de France, Compte rendu des séances, 36 (1): 417-423.
- BRÂNDZĂ, M., 1890 a - Recherches anatomique sur les hybrides. Comptes rendus des sciences de l'Académie des Sciences, Paris, 109: 1-317.
- BRÂNDZĂ, M., 1890 b - Recherches sur le développement des téguments seminaux des Angiospermes. Comptes rendus des sciences de l'Académie des Sciences, Paris, 110: 1223-1225.
- BRÂNDZĂ, M., 1890 c - Recherches anatomique sur la structure de l'hybride entre l'*Aesculus rubicunda* et le *Pavia flava*. Revue générale de botanique, 2: 123-125.
- BRÂNDZĂ, M., 1891 - Développement des téguments de la graine. Thèse soutenue à la Faculté des Sciences, Paris pour obtenir le grade de docteur ès sciences naturelles le 21 février 1891. Editeur Paul Klincksieck. 94 pp.
- BRÂNDZĂ, M., 1895 - Développement des téguments de la graine. Revue générale de botanique, 3: 1-32, 105-117, 152-164, 229-240.
- BRÂNDZĂ, M., 1905 a - Contribuțiuni la studiul raciei bradului (*Peridermium elatinum*) observată în pădurile de la Slănic (Moldova). Suppl. Universala: 1-21. (in Romanian)
- BRÂNDZĂ, M., 1905 b - Învățământul botanice la Școala Centrală de Agricultură. Edit. Fortuna. 205 pp. (in Romanian)
- BRÂNDZĂ, M., 1914 a - Contribuțiuni la studiul zoocecidilor din România. Analele Academiei Române. Memoriile Secțiunii Științifice, Seria 2, 36 (8): 173-235. (in Romanian)
- BRÂNDZĂ, M., 1914 b - Myxomycètes de Roumanie. Annales Scientifiques de l'Université de Iassy, 8: 259-294.
- BRÂNDZĂ, M., 1916 a - Deuxième contribution à l'étude des Zooecidies de la Roumanie. Annales Scientifiques de l'Université de Iassy, 10 (1): 94-120.
- BRÂNDZĂ, M., 1916 b - Note sur quelques Myxomycètes nouvelles pour la flore Mycologique de la Roumanie. Annales Scientifiques de l'Université de Iassy, 10 (2): 182-199.

- BRÂNDZĂ, M., 1921 - Troisième contribution à l'étude des Myxomycètes de Roumanie. Annales Scientifiques de l'Université de Iassy, 11 (1-2): 111-131.
- BRÂNDZĂ, M., 1924 - Sur l'apparition des Myxomycètes dans la ville de Bucarest sur des substratums préparés d'avance. Annales Scientifiques de l'Université de Iassy, 13 (1-2): 93-99.
- BRÂNDZĂ, M., 1925 - Sur l'influence de la chaleur et de l'évaporation rapide sur les Myxomycètes Calcarées vivant en plein soleil. Comptes rendus des sciences de l'Académie des Sciences, Paris, 182: 488-489.
- BRÂNDZĂ, M., 1926 - Sur la polychromie des Myxomycètes vivant en plein soleil. Comptes rendus des sciences de l'Académie des Sciences, Paris, 182: 987-989.
- BRÂNDZĂ, M., 1927 - Sur la fusion ou la séparation des plasmodiums, prises comme criteriums dans la définition de l'espèce chez les Myxomycètes. Comptes rendus des sciences de l'Académie des Sciences, Paris, 185: 1072-1074.
- BRÂNDZĂ, M., 1928 a - Les Myxomycètes de Neamtz (Moldavie). Bulletin Trimestriel de la Société Mycologique de France, 44: 249-300.
- BRÂNDZĂ, M., 1928 b - Recherches morphologique et expérimentales sur les sclérotés des Myxomycètes calcarées. Comptes rendus des sciences de l'Académie des Sciences, Paris, 186: 800-802.
- BRÂNDZĂ, M., 1928 c - Observations sur quelques sclérotés des Myxomycètes calcarées. Le Botaniste, 20: 117-146.
- BRÂNDZĂ, M., 1930 - Quelques Myxomycètes nouveaux recoltés en Moldavie. Contribuțiuni botanice, Cluj, 1 (12): 132-135.
- BRÂNDZĂ, M., 1934 - Flora ilustrată a plantelor lemnoase din România. Edit. Cartea Românească. 395 pp. (in Romanian)
- BRÂNDZĂ, M., T. SĂLACOLU, 1932 - Contributions à l'étude des Gastéromycètes de Roumanie. Publicațiunile Societății Naturaliștilor din România, 11: 5-33.
- BRÂNDZĂ, M., T. SĂLACOLU, 1937 - Sur le développement et la maturation de quelques Gastéromycètes. Le Botaniste, 28: 203-227.
- BUCHTA, I., S. JANDOVÁ, M. KRESKOVÁ, M. KULA, 2005 - Occurrence variations and spatial distribution of subspecies of *Eriophyes tiliae* (Acari, Eriophyidae) on lime (*Tilia* sp.) in urban environment. In: P. Neuhöferová, (ed.), Management of urban forests around large cities, Proceedings of abstracts, Czech University of Agriculture Prague, Faculty of Forestry and Environment, Department of Silviculture, 3-5. October 2005, Prague.
- CALDERA, R., 2008 - On the taxonomy and nomenclature of some Mecynini (Coleoptera, Curculionidae). Fragmenta entomologica, 40 (1): 125-137.
- GAGNÉ R., 2004 - A catalogue of the Cecidomyiidae (Diptera) of the world. Memoirs of the entomological Society of Washington, 25: 1-408.
- HOUARD, C., 1908 - Les Zoocécidies des Plantes d'Europe et du Bassin de la Méditerranée. Edit. A. Hermann & Sons, Paris, 1: 1-569.
- HOUARD, C., 1909 - Les Zoocécidies des Plantes d'Europe et du Bassin de la Méditerranée. Edit. A. Hermann & Sons, Paris, 2: 570-1248.
- HOUARD, C., 1913 - Les Zoocécidies des Plantes d'Europe et du Bassin de la Méditerranée. Edit. A. Hermann & Sons, Paris, 3: 1249-1560.
- LEHRER, A., M. LEHRER, 1990 - Cartografierea faunei și florei României (coordonate arealogice). Edit. Ceres, București. 289 pp. (in Romanian)
- LISTER, G., M. BRÂNDZĂ, 1926 - Amaurochaete comata. In: G. Lister, (ed.), New species of Amaurochaete and some other Mycetozoa. The Journal of botany, British and foreign, 64: 225-227.
- MOORE, D. M., 2009, (ed.) - Flora Europaea Check-List and Chromosome Index. Cambridge University Press, Cambridge, i-iv + 1-423.
- SCOBLE, M. J., 2002 - Research Infrastructures – The European Natural History Specimen Information Network. Office for Official Publications of the European Communities, Luxembourg. 32 pp.
- * * * Fauna Europaea Web Service, Fauna Europaea version 1.2. Available online at <http://www.faunaeur.org>

Received: April 29, 2009

Accepted: June 4, 2009

Muzeul Național de Istorie Naturală „Grigore Antipa”
Șos. Kiseleff 1, 011321 București 2, România
e-mail: m_stanescu@yahoo.com