

<i>Travaux du Muséum National d'Histoire Naturelle</i> «Grigore Antipa»	Vol. L	pp. 231–237	© Octobre 2007
--	--------	-------------	-------------------

**NEW FAUNISTIC DATA ON SOME DIPTERA FAMILIES  
(INSECTA: DIPTERA) FROM MARAMUREŞ, REPORTING  
FAMILY ODINIIDAE HENDEL IN ROMANIA**

CORNELIU PÂRVU

Abstract. Family Odiniidae is reported for Romanian fauna from Maramureş Depression. From other 10 families (especially tipulomorphs and empidids) new distribution data are given for 50 species. Four species are reported for Romania for the first time and 23 for Maramureş.

Résumé. On signale de la dépression du Maramureş la famille Odiniidae dans la faune de la Roumanie. On fournit de nouvelles données de répartition pour 50 espèces appartenant à 10 autres familles (surtout des tipulomorphes et des empididae); 4 espèces sont signalées pour la première fois en Roumanie et 23 espèces pour la première fois dans le Maramureş.

Key words: Diptera, families, Odiniidae, Maramureş, new reports.

*INTRODUCTION*

The intensive study of the fauna of Maramureş Depression was initiated by the scientists from „Grigore Antipa” National Museum of Natural History (Bucharest) in 1995; the researching programme and the first group of articles were published in 1997 (Gâldean & Pârvu, 1997); since then, the field trips and the publishing of the results practically continued till now (Pârvu, 2006).

The study on dipterans firstly focused on the families Dolichopodidae, Empididae and Mycetophilidae (Pârvu, 1997, 1998, 2002), extending with other 55 families (Pârvu, 2003).

*MATERIAL AND METHOD*

The rich material of dipterans from Maramureş, gathered in the collections of „Grigore Antipa” National Museum of Natural History, was identified partially, for the time being. Besides the material mounted in pins there is also a smaller lot, preserved in alcohol, which I present further on. It results from collective collectings with Barber or light traps. The material preserved in alcohol presents some advantages as the good conservation of the antennae or the possibility of the direct dissections, without re-hydration or “meltings” in KOH 10 %.

For the editing of the taxonomical list and of the distribution I used the taxonomy and the sigles from the volumes (1-13) of the Palaearctic Catalogue of Dipterans (Soós & Papp, 1992) as well as some lists reviewed in different countries, e.g. Czech Republic, Slovakia, that one co-ordinated by Chvála (1997). In the list two points (••) mark the taxa unreported from Romania and one point (•) those unreported from Maramureş.

---

English translation by Mihaela Barcan Achim.

## RESULTS

All data from the present paper offer new information on the distribution of some taxa – 51 species of 11 families – in other sites than those they were already reported, superpositions not being present. As a superspecific taxonomical novelty is the report of a family, uncited in literature, for Romania: Odiniidae Hendel, by the species *Odinia maculata* (Meigen, 1830); other 3 species are reported for Romania for the first time: *Empis scutellata* Curtis (Empididae), *Bicellaria sulcata* (Zetterstedt) (Hybotidae) and *Hydrophorus nebulosus* Fallén (Dolichopodidae). Totally, 23 species are reported for the first time from Maramureş Depression.

## Family Odiniidae Hendel, 1922

•• *Odinia maculata* (Meigen, 1830): 3 ♀♀, Coşnea Forest range, 25.VII.2004, leg. C. Pârvu (Fig. 1). Distribution: D, DDR, F, GB, A, H, CS, PL, I, ? NL. Family and species reported for the first time in Romania.

*General data on family Odiniidae*

Flies of small to medium size (ca. 4 mm long), with a compact structure and black-grey coloured.

They are Acalyptratae of the superfamily Opomyzoidea, the family including 10 genera, 7 of them occurring in the southern hemisphere.

Genus *Odinia* Robineau-Desvoidy is typical for the northern hemisphere.

Larvae live in association with wood-boring insects.

The adults occur in forests attacked by fungi and „around moist wounds of trees, especially on birch” (Krivosheina, 1984).

The position of family Odiniidae in the identification key in comparison with family Milichiidae (according to Stackel’berg, 1970, modified):

218 (219) Anterior orbitals directed forward, costal vein with two interruptions – near R1 and distal to humeral crossvein, *pvt* divergent or parallel..... Milichiidae.

219 (218) Anterior orbitals directed backward. Costal vein with one interruption near R1. *pvt* divergent.

220 (221) Vertical plates of frons with two orbitals, each extending almost up to anterior margin of frons where one frontal bristle occurs on frontal plate. Abdomen of male and female with five visible segments. Ovipositor soft and retractile..... Odiniidae.

The position and identification of the species *Odinia maculata* in the identification keys of the genus *Odinia* R. - D. (after Hennig, 1938):

1. Acrostichals (*acr*) in 8 – 10 rows. Width of the cheeks equal with half of the vertical diameter of eyes. Both transversal veins (*ta* and *tp*) with plain brown spots..... *maculata* Meigen.
2. Acrostichals (*acr*) only in 6 rows. Width of the cheeks do not exceed half of the vertical diameter of the eyes. Wing veins, if they are spotted, have pale brown spots ..... *boletina* Zetterstedt.

For certifying the identification I figured the head, in lateral view and the wing, after the material (Fig. 1).

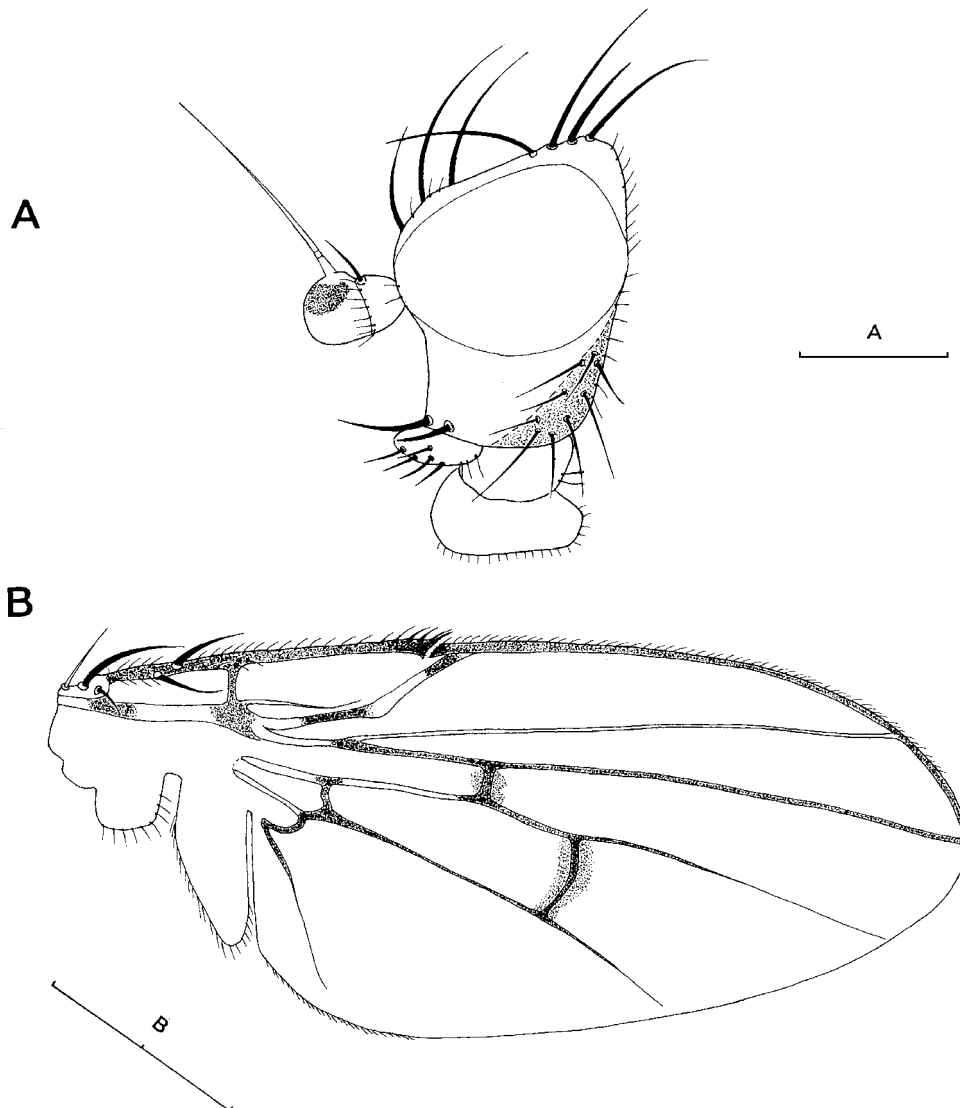


Fig. 1 – *Odinia maculata* (Meigen, 1830), female. A, head in lateral view; B, wing.  
Scales: A – 0.5 mm; B – 1 mm.

## Family Limoniidae

*Epiphragma ocellare* (Linnaeus, 1761): 1 ♂, Săpâncioara Valley, 20.V.1996, leg. D. Ruști, 1 ♂, Mara („Colnic” Forest range), 19.VII.1998, leg. Ioana Matache & Adriana Văraru (300 mowings, 4 p.m.).

- *Phylidorea* (*s. str.*) *squalens* (Zetterstedt, 1838): 2 ♀♀, Tătarul Gorges, 21.VI.1998, leg. D. Ruști.

- *Eriocnopa symplectoides* (Kuntze, 1914): 2 ♂♂, Tătarul Gorges, 21.VI.1998, leg. D. Ruști.

*Erioptera lutea* Meigen, 1804: 1 ♂, Săpânta („Colibi” Forest range), 14-22.V.1996 – 10 Barber traps, leg. D. Ruști & R. Pană.

- *Rhabdomastix* (*Palaeogonomyia*) *hirticornis* (Lackschewitz, 1940): 2 ♂♂, Vișeu Valley, 18.V.1996, leg. D. Ruști. It is known only from Suceava and Bistrița Năsăud counties (Erhan & Ceianu, 1986).

- *Limonia albifrons* (Meigen, 1818): 1 ♂, Săpâncioara Valley, 20.V.1996, leg. D. Ruști.

- *L. macrostigma* (Schummel, 1829): 1 ♂, Mara („Colibi” Forest range), 19.VII.1998, leg. Ioana Matache.

- *L. pannonica* (Kowarz, 1868): 1 ♂, Vișeu Valley, 18.V.1996, leg. D. Ruști.

- *L. phragmitidis* (Schrank, 1781): 2 ♂♂, Mara River (upstream the confluence with Runcu), 21.VI.1998, leg. D. Ruști.

- *Neolimonia dumetorum* (Meigen, 1804): 1 ♂, Mara („Colnic” Forest range), 18.VII.1998, leg. Ioana Matache & Adriana Văraru.

## Family Pediciidae

- *Dicranota* (*Paradicranota*) *martinovskiyi* Starý, 1974: 1 ♂, Săpâncioara Valley, 20.V.1996, leg. D. Ruști. Species recently reported from Romania, from Bihor Mountains by Ujvárosy & Starý (2002).

- *Tricyphona immaculata* (Meigen, 1804): 1 ♂, Mara („Colibi” Forest range), 16.V.1996 (light trap), leg. D. Ruști.

## Family Tipulidae

- *Nephrotoma appendiculata* (Pierre, 1919): 1 ♂, Săpânta Valley, 18.V.1996, leg. D. Ruști.

- *N. dorsalis* (Fabricius, 1782): 1 ♂, 1 ♀, Mara (“Colnic” Forest range), 18.VII.1998, leg. Ioana Matache & Adriana Văraru.

- *N. quadrifaria* (Meigen, 1804): 1 ♂, Rozavlea (100 m downstream), 17.VI.1998, leg. D. Ruști.

- *N. scalaris* (Meigen, 1818): 1 ♂, Bogdan Vodă, 17.VI.1998, leg. D. Ruști.

- *Tipula* (*Acutipula*) *tenuicornis* Schummel, 1833: 1 ♂, Săpânta Valley, 18.V.1996, leg. D. Ruști. Reported in Romania at Erhan (1971) from Vâlcea County.

- *T. (Schummelia) variicornis* (Schummel, 1833): 1 ♂, Săpânta Valley, 18.V.1996, D. Ruști, 1 ♂, Săpânta (Nireș clearing), 20.V.1996 (at actinic light), leg. D. Ruști.

- *T. paludosa* Meigen, 1830: 1 ♂, Strâmtura (Berșotă stream), 7.IX.1995, leg. C. Pârvu, 1 ♂, Ieud, 8.IX.1995 (unmaking hay), leg. C. Pârvu.

- *T. (Yamatotipula) pruinosa* Wiedemann, 1817: 1 ♂, Mara (“Colnic” Forest range), 19.VII.1998 (300 mowing with the entomological net), leg. Ioana Matache & Adriana Văraru.

## Family Bibionidae

• *Bibio hortulanns* (Linnaeus, 1758): 2 ♂♂, Săpâța (Nireș clearing) (at black actinic light), leg. D. Ruști & M. Stănescu.

*B. marci* (Linnaeus, 1758): 97 ♂♂, Săpâța („Colibi” Forest range), 17.V.1996, leg. D. Ruști & M. Stănescu (100 mowing with the entomological net).

*Dilophus femoratus* Meigen, 1804: 1 ♂, Tătarul Gorges (downstream the confluence), 21.VI.1998, leg. D. Ruști, 2 ♀♀, Iza Spring, 9.IX.1995, 1 p. m. = 22°C, leg. C. Pârvu.

## Family Rhagionidae

*Rhagio tringarius* (Linnaeus, 1758): 1 ♂, Mara (“Colnic” Forest range), 19.VII.1998 – 300 mowing with the entomological net, leg. Ioana Matache & Adriana Văraru.

## Family Tabanidae

*Tabanus cordiger* Meigen, 1820: Coșnea (forest range) – on the river bank, 19.VII.2004, leg. C. Pârvu.

## Family Empididae

*Hilara albiventris* von Roser, 1840: 1 ♂, Mara (2 km upstream Runcu River), 21.VI.1998, leg. D. Ruști.

*H. lasiopa* Strobl, 1892: 1 ♂, Coșnea (Forest range), on the river bank, 19.VII.2004, leg. C. Pârvu.

*H. lurida* (Fallén, 1816): 1 ♂, Mara (2 km upstream, on Runcu river), 21.VI.1998, leg. D. Ruști.

*H. merula* Collin, 1927: 1 ♂, Bistra, 28.VI.1997, leg. C. Pârvu, 2 ♂♂, Pop Ivan River, 18.VII.2004, C. Pârvu.

*H. nitidula* Zetterstedt, 1838: 1 ♂, Repedea („Colibi” clearing), 17.V.1996, leg. D. Ruști.

• *H. nigrocincta* de Meijere, 1935: 1 ♂, Bogdan Vodă, 17.VI.1998, leg. D. Ruști.

• *Empis (Anacrostichus) nitida* Meigen, 1804: 2 ♂♂, Repedea („Colibi” clearing), 17.V.1996, leg. D. Ruști & M. Stănescu.

*E. (Coptophlebia) albinervis* Meigen, 1822: 1 ♂, Repedea („Colibi” clearing), 16.V.1996, leg. D. Ruști.

*E. (Coptophlebia) pilimana* Loew, 1869: 5 ♂♂, Rozavlea, 17.VI.1998, leg. D. Ruști.

*E. (s. str.) anfractuosa* Mik, 1884: 5 ♂♂, Săpâța Valley, 18.V.1996, leg. D. Ruști, 3 ♂♂, Săpâncioara Valley, 20.V.1996, leg. D. Ruști.

*E. (s. str.) chioptera* Meigen, 1804: 5 ♂♂, Repedea („Colibi” clearing), 14-22.V.1996, 10 Barber traps, leg. D. Ruști, 3 ♂♂, Săpâncioara Valley, 20.V.1996, leg. D. Ruști.

• *E. (s. str.) gymnopoda* Bezzi, 1908: 1 ♂, Săpâncioara Valley, 20.V.1996, leg. D. Ruști.

*E. (Kritempis) livida* Linnaeus, 1758: 1 ♂, Tătarul Gorges, 21.VI.1998, leg. D. Ruști.

*E. (Leptempis) grisea* Fallén, 1816: 1 ♂, Tătarul Gorges, 21.VI.1998, leg. D. Ruști.

• *E. (Polyblepharis) opaca* Meigen, 1804: 1 ♂, Repedea („Colibi” clearing), 17.V.1996, leg. D. Ruști.

*E. (Xanthempis) lutea* Meigen, 1804: 1 ♂, Mara (“Colnic” Forest range), 18.VII.1998, leg. Ioana Matache.

• • *E. (X.) scutellata* Curtis, 1835: 1 ♀, 1 ♀, Bistra Valley, 28.VI.1997, leg. Ioana Matache.

Distribution: IRE, GB, NL, D, CS, A, F. Species reported for the first time from Romania.

• *Phyllodromia melanocephala* (Fabricius, 1794): 2 ♂♂, Mara ("Colnic" Forest range), 18.VII.1998, leg. Ioana Matache & Adriana Văraru.

#### Family Hybotidae

• • *Bicellaria sulcata* (Zetterstedt, 1842): 3 ♂♂, Săpâța (Nireș clearing), 20.V.1996, leg. D. Ruști & M. Stănescu.

Distribution: Europe: N, S, SF, IRE, GB, DK, D, DDR, CS, A, E, F, I, YU, BG; USSR: NET, CET, SET (Rs), ES. Species reported for the first time from Romania.

• *Symbalophthalmus pictipes* (Becker, 1889): 1 ♀, Repedea, 26.VI.-2.VII.1997, Barber traps, leg. D. Ruști & Mihaela Stănescu.

#### Family Dolichopodidae

• *Sciapus bellus* Loew, 1873: 2 ♂♂, 2 ♀♀, Mara („Colibi” Forest range), 18.VII.1998, leg. Ioana Matache & Adriana Văraru, 1 ♂, Mara (“Colnic” Forest range), 19.VII.1998 – 300 mowing with the entomological net, leg. Ioana Matache & Adriana Văraru.

*Xanthochlorus tenellus* (Wiedemann, 1817): 2 ♂♂, 2 ♀♀, Mara (“Colnic” Forest range), 18.VII.1998 – 1 ♀ with 17 eggs, leg. Ioana Matache & Adriana Văraru.

• • *Hydrophorus nebulosus* Fallén, 1823: 1 ♀, Săpâța („Colibi” clearing), 17.V.1996, leg. D. Ruști.

Distribution: S, SF, IRE, GB, NL, DK, CS, F, PL; USSR: NT („Leningrad”) CET (Est., Minsk), WS, ES, FE. Species reported for the first time from Romania.

*Dolichopus popularis* Wiedemann, 1817: 1 ♂, Tătarul Gorges, 21.VI.1998, leg. D. Ruști.

#### Family Drosophilidae

• *Leucophenga maculata* (Dufour, 1829): 1 ♂, Mara (“Colnic” Forest range), 19.VII.1998, Ioana Matache & Adriana Văraru.

#### ACKNOWLEDGEMENTS

The author wants to thank to Mrs Petruța Dumitrică for tracing the drawings in China ink and to his colleagues, especially to Mr. Dorel Ruști, who collected most of the specimens.

#### NOI DATE FAUNISTICE DESPRE UNELE FAMILII DE DIPTERE (INSECTA: DIPTERA) DIN MARAMUREȘ CU SEMNALAREA FAMILIEI ODINIIDAE HENDEL ÎN ROMÂNIA

#### REZUMAT

Prin cercetarea unui lot de material conservat în alcool, colectat din Maramureș de către cercetătorii de la Muzeul Național de Istorie Naturală „Grigore Antipa”, între anii 1995–2004 se prezintă date din 11 familii de diptere. Familia Odiniidae și 3 specii din alte 3 familii sunt la prima semnalare în România; din cele 51 de specii 23 de specii marcate cu punct negru (•) sunt la prima semnalare în Maramureș.

## LITERATURE CITED

- CHVÁLA, M., 1997 – Check List of Diptera (Insecta) of the Czech and Slovak Republics. Karolinum. Charles University Press. 130 pp.
- ERHAN, E., 1971 – Noi specii de Tipulinae (Diptera: Tipulidae) din fauna României. Studii și cercetări de biologie, Seria zoologie, 23 (6): 537–550. (in Romanian)
- ERHAN, E., I. CEIANU, 1986 – Contribuții la cunoașterea faunei de Limoniidae (Diptera) din nordul Carpaților Orientali ai României. Lucrările celei de a III a Conferințe de Entomologie, Iași, 20 – 22 mai 1983: 85–92. (in Romanian)
- GĂLDEAN, N., C. PÂRVU, 1997 – The goals of the Research Programm Maramureș (Romania). Travaux du Muséum National d'Histoire Naturelle „Grigore Antipa”, 37: 7–9.
- HENNIG, W., 1938 – 60 b. Odiniidae *In*: E. Lindner (ed.), Die Fliegen der palaearktischen Region, 6 (1): 1–11.
- KRIVOSHEINA, N. P., 1984 – Family Odiniidae *In*: L. Soós & L. Papp (eds), Catalogue of Palaearctic Diptera, 9: 260–262.
- PÂRVU, C., 1997 – Dolichopodidae (Diptera: Dolichopodidae) from Iza Valley, Maramureș (Romania) (XII). Travaux du Muséum National d'Histoire Naturelle „Grigore Antipa”, 37: 113–124.
- PÂRVU, C., 1998 – Empididae (Diptera) from Maramureș Depression – Northern Romania. Travaux du Muséum National d'Histoire Naturelle „Grigore Antipa”, 40: 561–586.
- PÂRVU, C., 2002 – Fungus – gnats (Diptera: Mycetophilidae) from Maramureș Depression, at first mention in Romania. Travaux du Muséum National d'Histoire Naturelle „Grigore Antipa”, 44: 261–265.
- PÂRVU, C., 2003 – Faunistic materials (Insecta: Diptera) for the knowledge of biodiversity of Maramureș Depression, Romania. Travaux du Muséum National d'Histoire Naturelle „Grigore Antipa”, 45: 227–277.
- PÂRVU, C., 2006 – New faunistic data on some dipteran families (Insecta) from Vaser Valley and Țibleș Mountains – Maramureș (Romania). Travaux du Muséum National d'Histoire Naturelle „Grigore Antipa”, 49: 259–270.
- SOÓS, L., L. PAPP, 1992 – Introduction to volumes 1 – 13. *In*: L. Soós, L. Papp, P. Oosterbroeck (eds), Catalogue of Palaearctic Diptera, 1: 1–29.
- STACKEL'BERG, A. A., 1970 – 76. Sem. Odiniidae. *In*: Bei – Bienko (ed.), Opredeliteli nasekomykh evropeiskoi Chasti SSR, 5 (2): 232–233. (in Russian)
- UJVÁROSY, L., P. STARÝ, 2002 – A new *Pedicia* (Crunobia) from Romania and other species new to the country's fauna (Diptera: Pediciidae). Entomologica Romanica, 7: 45–50.

Received: February 22, 2007

Accepted: March 26, 2007

Muzeul Național de Istorie Naturală „Grigore Antipa”

Șos. Kiseleff nr. 1, 011341 București 2, România

e-mail: cparvu@antipa.ro