

Travaux du Muséum National d'Histoire Naturelle «Grigore Antipa»	Vol. LI	pp. 369–386	© Novembre 2008
---	---------	-------------	--------------------

NEW DATA ON THE ROVE BEETLE FAUNA (COLEOPTERA: STAPHYLINIDAE) FROM BUCUREȘTI AND ITS SURROUNDINGS

MELANIA STAN

Abstract. The paper completes the faunistic data on the rove beetles of București and adjacent areas based on the material collected within the period 1955 - 2006 and on the revised specimens of the collection of “Grigore Antipa” National Museum of Natural History (Montandon Collection, 46 species). A total of 161 species (19 are common) are recognised. 32 sites are new from where rove beetles are reported. The drawings of the male sexual characters of *Lathrobium furcatum* Czwalina, 1888, *Leptobium dimidiatum* Gridelli, 1926, *Oxytelus migrator* Fauvel, 1904, and the drawing of spermatheca of *Ilyobates bennetti* Danisthorpe, 1914 are presented. A few rove beetle ecological categories based on the investigated habitats and microhabitats are mentioned.

Résumé. Ce travail complète les données faunistiques sur les Staphylinides de Bucarest et de ses environs, sur la base du matériel collecté dans la période 1955-2006 et de la révision des exemplaires qui se trouvent dans la collection du Muséum National d'Histoire Naturelle „Grigore Antipa” (la Collection Montandon, comprenant 46 espèces). On reconnaît 161 espèces (dont 19 sont communes). On enregistre 32 nouveaux sites de Staphylinides. On présente les dessins des caractères génitaux mâles des espèces *Lathrobium furcatum* Czwalina, 1888, *Leptobium dimidiatum* Gridelli, 1926, *Oxytelus migrator* Fauvel, 1904 et le dessin de la spermathèque de *Ilyobates bennetti* Danisthorpe, 1914. On présente quelques catégories écologiques de Staphylinides, sur la base des habitats et des microhabitats investigués.

Key words: Coleoptera, Staphylinidae, București, adjacent areas, Romania, faunistical data, ecological categories.

Some centuries ago, the southern part of Romania, including the present territory of București (Bucharest) and its adjacent areas, was covered by Codrii Vlăsiei (Vlăsia Forest). Till the 19th century, a large part of Codrii Vlăsiei remained intact, but the development of human communities, the need of agricultural lands, the need of wood made the afforested areas to diminish gradually. In București area there are small surfaces covered by mixed Panonic-Danubian forests of Turkey and Italian oak (*Quercus cerris*, *Q. frainetto*) with *Q. robur* and *Q. pubescens*, and in its surroundings clusters of Pedunculata oak and Hornbeam Danubian forests (*Quercus robur*, *Carpinus betulus*) with *Tilia tomentosa* occur, as well as *Carpesium cerrum*, Danubian mixed forests of *Quercus pedunculiflora*, *Q. cerris*, *Q. pubescens*, *Q. virgiliana* with *Asparagus tenuifolius*.

The knowledge of the București biodiversity and its surroundings is a necessity, within the conditions of having at my disposal very old data, less numerous, and the multidimensional development of the area will generate a strong impact.

The present study is the result of my collaboration at the project “Study of the fauna of București and its surroundings” (Pârvu, 2008).

As regards the rove beetle fauna, the first data on their collecting from București and its adjacent areas belong to M. Jaquet. In several papers published between 1898 and 1902 under the title „Faune de la Roumanie” (“Fauna of Romania”) ten species collected from București, Băneasa, Chitila and Comana are

reported. From the 194 coleopteran species published by Hurmuzachi (1901), captured in 1899 and 1900 by the members of Naturalists' Society, three rove beetle species are cited from the North of Ilfov County - Cocioac – the present Periș and Piscul Herasca – now included in Ciolpani Commune. In “Die Coleopteren Rumäniens” (Fleck, 1906) there are 48 rove beetle species reported from București and adjacent areas. A. L. Montandon's papers (1906, 1908) offer data on the structure of the rove beetle fauna, for București and Comana being reported 41, respectively 113 rove beetle species. In 1909, Roubal published “Additions au catalogue des Coléoptères de la Roumanie. Staphylinidae.”, basing on the material collected by A. L. Montandon, being reported 61 species from București and Comana. After the study of this material, four of the specimens collected from București were base of the description of *Atheta montandoni* (Roubal, 1909), today included in the genus *Pediculota*. In the paper on the coleopteran collection of the Laboratory of Descriptive Zoology of București (Manolache, 1930), collected from the mountain and sub-mountain areas of the Sinaia resort, of București and its adjacent areas, 27 rove beetle species are reported for București and Comana. The number of the rove beetle species reported from București and its surroundings is of 188.

MATERIAL AND METHODS

Habitats studied for the rove beetle collecting are represented by the forests from the adjacent areas and green zones in București. The material is from the recent collecting made in 2006 in the surrounding areas (Comana Forest, Ogarca Forest, Crucea de Piatră, Bălteni, Dascălu, Ghimpați, Tâncăbești) as well from the collecting made between 1953-2004 by different specialists of the museum. For this study I also used the rove beetle material collected by A. L. Montandon from București and Comana, preserved in the Palaearctic Coleopteran Collection of “Grigore Antipa” National Museum of Natural History.

Collecting sites from București and the adjacent areas (within a range of maximum 40 km from the centre of București) are represented in fig. 1. The presence of some rove beetle species is reported from 32 sites (marked by *) for the first time.

Collecting site, in alphabetical order:

*Afumați (IF)	*Florești (Florești-Stoenești-GR)
*Bălteni (Periș-IF)	*Fundulea (CL)
*Bănești (Iepurești, GR)	*Ghimpați (GR)
*Bila (Schitu-GR)	*Gruiu (Căldărușani Forest-IF)
*Bolintin-Deal (GR)	*Gulia (Tărtășești-DB)
*Branștea (GR)	*Islaz (Brănești-IF)
*Brănești (IF)	*Măgurele (IF)
București (the capital together with the suburban communes and forests):	*Măriuța (Belciugatele-IF)
Chitila	*Mihăilești (GR)
Mogoșoaia	Cernica Forest (Cernica-IF)
*Odăile (Otopeni)	Ciolpani Forest
*Otopeni	Comana Forest, Izvorul cu Nuci (Comana)
*Roșu (Chiajna)	*Dumitrana Forest (Măgurele-IF)

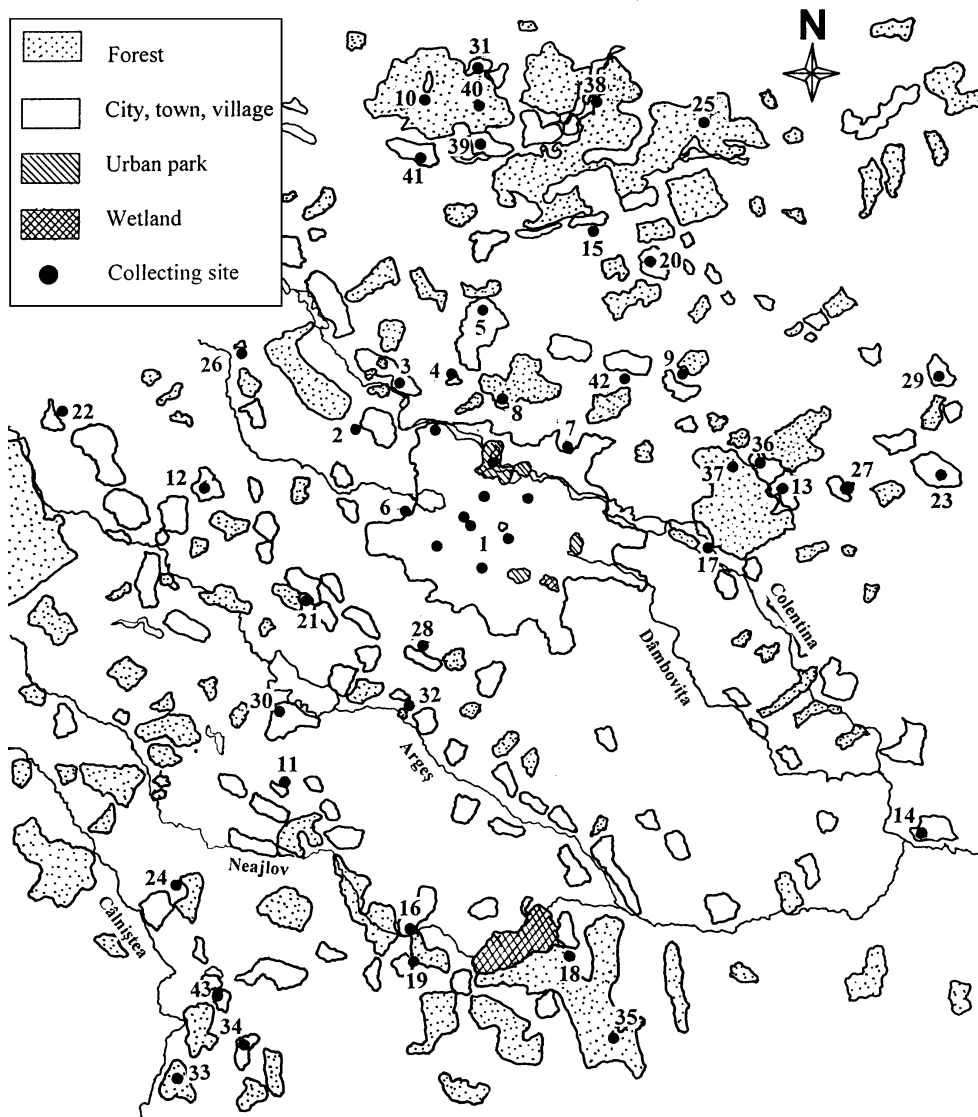


Fig. 1 – The map of collecting sites from București and adjacent areas. 1- București; 2 – Chitila; 3 – Mogoșoaia; 4 – Odăile; 5 – Otopeni; 6 – Roșu; 7 – Andronache Forest; 8 – Băneasa Forest; 9 – Afumați; 10 – Bălteni; 11 – Bănești; 12 – Bolintin-Deal; 13 – Brănești; 14 – Budești; 15 – Căciulați; 16 – Călugăreni; 17 – Cernica; 18 – Comana; 19 – Crucea de Piatră; 20 – Dascălu; 21 – Domnești; 22 – Florești; 23 – Fundulea; 24 – Ghimpați; 25 – Căldărușani; 26 – Gulia; 27 – Islaz; 28 – Măgurele; 29 – Măriuța; 30 – Mihăilești; 31 – Ciolpani Forest; 32 – Dumitrana Forest; 33 – Manafu Forest; 34 – Vlasin Forest; 35 – Padina Tătarului Forest; 36 – Pasărea Forest; 37 – Pusnicu Forest; 38 – Snagov Forest; 39 – Tâncăbești Forest; 40 – Țigănești Forest; 41 – Periş; 42 – Ștefăneștii de Jos; 43 – Schitu.

*Andronache Forest	*Manafu Forest (Valea Bujorului, Izvoarele)
Băneasa Forest	*Ogarca Forest (Vlasin-GR)
*Budești (CL)	Padina Tătarului Forest (Comana-GR)
*Căciulați (Moara Vlăsiei, IF)	Pasărea Forest (Brănești-IF)
*Călugăreni (GR)	*Pusnicu Forest (Brănești-IF)
Cernica (IF)	Snagov Forest (Snagov-IF)
Comana (GR)	*Tâncăbești Forest (Tâncăbești-IF)
*Crucea de Piatră (Călugăreni, GR)	Țigănești Forest (Ciolpani)
*Dascălu (IF)	Periș (IF)
*Domnești (IF)	*Ștefăneștii de Jos (IF)

Abbreviations.

In the faunistic list the name of collectors (from “Grigore Antipa” National Museum of Natural History, București and collaborators of the Museum) were abbreviated as follows: A. G. – Andrei Gabriela; B. V. – Brădescu Vladimir; C. C. – Calefariu Cristina; C. G. – Chișamera Gabriel; C. E. – Cursaru Elena; D. I. – Drăghia Ion; D. F. – Dumitrescu Flori; D. A. – Dumitru Angelica; G. N. – Găldean Nicolae; G. V. – Gheorghiu Victor; I. V. – Iuga Victoria; M. S. – Maican Sanda; M. I. – Matache Ioana; N. G. – Năzăreanu George; N. Ș. – Negru Ștefan; P. R. – Plăiașu Rodica; P. E. – Pisciă Elena; P. G. A. – Popesc-Gorj Aurelian; P. Ș. – Procheș Șerban; R. A. – Roșca Atena; S. A. – Săftoiu Atanasie; S. N. – Săvulescu Nicolae; S. D. – Scăunașu Dragoș; S. X. – Scobiola Xenia; S. R. – Serafim Rodica; S. M. – Stan Melania; T. H. – Tănase Hadrian; W. M. – Weinberg Medeea.

The name of Romanian counties were abbreviated as it follows: CL – Călărași; DB – Dâmbovița; GR – Giurgiu; IF – Ilfov.

MNINGA - “Grigore Antipa” National Museum of Natural History; spec. (specs) – specimen (s)

A few collecting methods were used: pitfall traps, aspirator, litter sifting, entomological net and direct collecting from the ground.

Identified rove beetle species are presented in table 1, grouped in subfamilies, and in each subfamily, in alphabetical order. For each species, the collecting site, collecting date, specimen number, sex and legit are presented, and for the species which had data on their biotope, this mention it is also made.

Rove beetle material of “A. L. Montandon” Collection originating in București and Comana was reviewed, and the results are presented in table 2. It includes the species identified after revision, collecting site, specimen number, sex, initial identification which is written on the label, mentioning the name and when it was published.

The material identification is based on the features of the external morphology and on the study of special structures – aedeagus and spermatheca (the last one for the representatives of Aleocharinae). For the identification I used the following taxonomic studies: Lohse (1964, 1974, 1989), Coiffait (1974, 1978), Boháč (1985 a, b), Assing & Schülke (1999), Assing (1999, 2005).

RESULTS

The paper presents 134 rove beetle species identified for București and the adjacent areas (Tab. 1), as well as 46 species collected by A. L. Montandon from București and Comana (Tab. 2). From the 188 species mentioned in specialized literature, only 55 were found. Those ones are marked by *.

Table 1

Rove beetle species identified for București and its surroundings.

Nr. crt.	Subfamily/species	Material examined
Piestinae Erichson, 1839		
1.	<i>Siagonium quadricorne</i> Kirby & Spence, 1815	1 ♀, București, 1996, P. Ș.
Omaliinae MacLeay, 1825		
2.	<i>Acidota cruentata</i> Mannerheim, 1830	2 ♂♂, Cernica, 6 XII 1997, P. Ș.
3.	<i>Anthophagus bicornis</i> (Block, 1799)	1 ♂, Brănești, 19 VIII 1978, S. R.
4.	<i>Olophrum assimile</i> (Paykull, 1800)	1 ♀, Comana, 26 III 1995; București, Herăstrău Park, 2 specs, P. Ș.
5.	* <i>Omalium caesum</i> Gravenhorst, 1806	1 ♂, București, 10 V 1990, P. Ș.; 1 ♂, Căciulați (forest, litter), 26 V 2001, S. D.; 1 ♀, Padina Tătarului Forest (humid litter of <i>Quercus cerris</i> and <i>Q. robur</i>), 4 V 2006, S. M.; 1 ♂, Comana Forest, Izvorul cu Nuci (litter), 4 V-6 VI 2006, S. M.
6.	* <i>Omalium rivulare</i> (Paykull, 1789)	1 spec., Comana, 26 III 1995, P. Ș.; 2 ♀♀, Căciulați (forest, litter), 26 V 2001, S. D.
Aleocharinae Fleming, 1821		
7.	* <i>Aleochara curtula</i> (Goeze, 1777)	1 ♂, Tâncăbești (forest, litter), 11 IV 2006, S. M.
8.	<i>Aleochara erythroptera</i> Gravenhorst, 1806	1 ♂, Comana Forest, Izvorul cu Nuci (litter), 4 V-6 VI 2006, S. M.
9.	<i>Aleochara haematoptera</i> Kraatz, 1856	1 ♂, 2 ♀♀, Ogarca Forest, flooded area, 22 VI 2006, S. M.
10.	* <i>Aleochara intricata</i> Mannerheim, 1830	1 ♂, București, 14 X 1994, P. Ș.
11.	<i>Atheta crassicornis</i> (Fabricius, 1792)	2 ♀♀, Bălteni (forest, on <i>Pholiota</i> sp.), 24 VIII 2006, S. M.
12.	* <i>Atheta fungi</i> (Gravenhorst, 1806)	3 ♂♂, 3 ♀♀, Căciulați (forest, litter), 26 V 2001; 9 ♂♂, 6 ♀♀, 16 VI 2001, S. D.; 2 ♂♂, 1 ♀, Pasărea Forest, 18 IV-2 V 2006, S. M.
13.	<i>Atheta orbata</i> (Erichson, 1837)	1 ♀, Bălteni (forest, litter), 24 VIII 2006; 1 ♂, Pasărea Forest, litter, 18 IV-2 V 2006, S. M.
14.	<i>Bolitochara bella</i> Märkel, 1844	1 ♂, 2 ♀♀, Dascălu (forest, on tinder), 18 IV 2006, S. M.
15.	<i>Cypha longicornis</i> (Paykull, 1800)	2 ♂♂, 1 ♀, Comana, 16 IX 1994, P. Ș.
16.	* <i>Drusilla canaliculata</i> (Fabricius, 1787)	1 ♂, București, 20 IV 1996, P. Ș.; 1 ♂, Padina Tătarului Forest (in humid litter of <i>Quercus cerris</i> and <i>Q. robur</i>), 4 V 2006, S. M.
17.	<i>Falagria sulcatula</i> (Gravenhorst, 1806)	3 ♀♀, Bila (canal bank with reed), 22 VI 2006, S. M.
18.	<i>Gnypeta ripicola</i> (Kiesenwetter, 1844)	1 ♂, Ogarca Forest (temporarily flooded area), 6 IX 2006, S. M.
19.	<i>Gnypeta rubrior</i> Tottenham, 1939	1 ♀, București, 25 VIII 1996, P. Ș.; 1 ♂, Ogarca Forest (temporarily flooded area), 22 VI 2006, S. M.
20.	<i>Gyrophana affinis</i> Mannerheim, 1830	6 ♂♂, 3 ♀♀, Căciulați (forest, litter), 14 VII 2004, S. D.
21.	<i>Gyrophana hanseni</i> Strand, 1946	37 ♂♂, 28 ♀♀, Bălteni (forest, on <i>Pholiota</i> sp.), 24 VIII 2006, S. M.
22.	<i>Haploglossa nidicola</i> (Fairmaire, 1852)	42 specs, Mihăilești (from nests of <i>Riparia riparia</i>), 18 VIII 2004; 195 specs, 21 VIII 2004, C. G.
23.	<i>Ilyobates bennetti</i> Danisthorpe, 1914 (Fig. 2 A)	1 ♀, Pasărea Forest, 26 V 2001, P. C.
24.	<i>Ischnopoda umbratica</i> (Erichson, 1837)	2 specs, Măgurele, 13 IX 1997, P. Ș.; 1 ♀, Ogarca Forest (temporarily flooded area), 22 VI 2006, S. M.

Table 1 (continued)

Nr. crt.	Subfamily/species	Material examined
25.	<i>Liogluta granigera</i> (Kiesenwetter, 1850)	1 ♂, Căciulați (forest, litter), 26 V 2001, S. D.
26.	<i>Liogluta longiuscula</i> (Gravenhorst, 1802)	6 ♂♂, 4 ♀♀, Căciulați (forest, litter), 26 V 2001, S. D.; 1 ♀, Padina Tătarului Forest (in humid litter of <i>Quercus cerris</i> and <i>Q. robur</i>), 4 V 2006, S. M.
27.	<i>Myllaena dubia</i> (Gravenhorst, 1806)	1 ♂, Bila (canal bank with reed), 22 VI 2006, S. M.
28.	* <i>Nehemitropia lividipennis</i> (Mannerheim, 1830)	6 ♂♂, 1 ♀, Ogarca Forest (cow dung), 22 VI 2006, S. M.
29.	<i>Oxypoda acuminata</i> (Stephens, 1832)	3 ♂♂, Căciulați (forest, litter), 26 V 2001, S. D.; 1 ♂, Pasărea Forest (litter), 18 IV-2 V 2006; 5 ♂♂, 3 ♀♀, Comana Forest, Izvorul cu Nuci, 4 V-6 VI 2006, S. M.
30.	<i>Oxypoda brevicornis</i> (Stephens, 1832)	1 ♂, 1 ♀, Căciulați (forest, litter), 26 V 2001, S. D.
31.	<i>Parocysa rubicunda</i> (Erichson, 1837)	1 spec., București, 14 X 1994, P. Ș.
32.	<i>Pella lugens</i> (Gravenhorst, 1802)	1 ♂, 2 ♀♀, Căciulați (forest, litter), 26 V 2001, S. D.
33.	<i>Plataraea elegans</i> (Benick, 1934)	1 ♂, Călugăreni, 29 IV 1995, P. C.
34.	<i>Tachyusa coarctata</i> Erichson, 1837	1 spec., București, 25 VIII 1996; 1 spec., Măgurele, 13 IX 1997, P. Ș.; 1 ♀, Bila (canal bank with reed), 22 VI 2006, S. M.
35.	<i>Zyras collaris</i> (Paykull, 1800)	2 ♂♂, Dascălu (forest, litter), 18 04 2006; 1 ♂, Bălteni (forest, litter), 24 VIII 2006 S. M.
Tachyporinae MacLeay, 1825		
36.	* <i>Lordithon thoracicus</i> (Fabricius, 1777)	1 ♂, Ogarca Forest (forest skirt, in mushrooms), 6 IX 2006, S. M.
37.	<i>Sepedophilus bipustulatus</i> (Gravenhorst, 1802)	2 specs, Comana (forest), 23 II 1977, A. G.; 1 ♀, Domnești, 7 VIII 1995, P. Ș.
38.	<i>Sepedophilus immaculatus</i> (Stephens, 1832)	1 ♀, Ogarca Forest (litter), 6 IX 2006, S. M.
39.	<i>Sepedophilus pedicularius</i> (Gravenhorst, 1802)	7 ♀♀, 8 ♂♂, Padina Tătarului Forest (in humid litter of <i>Quercus cerris</i> and <i>Q. robur</i>), 4 V 2006, S. M.
40.	<i>Tachinus fimetarius</i> Gravenhorst, 1802	1 ♀, București, 1996, P. Ș.
41.	* <i>Tachinus marginellus</i> (Fabricius, 1781)	1 ♂, București, 1991, P. Ș.
42.	<i>Tachinus pallipes</i> Gravenhorst, 1806	1 ♀, București, 1991, P. Ș.
43.	* <i>Tachyporus hypnorum</i> (Fabricius, 1775)	1 ♂, București, 14 V 1977, S. R.; 1 ♀, București (museum park), 4 V 1985, C. E.; 1 spec. București, 5 VI 1996, S. M.; 4 specs, Budești, 25 V 1979 A. G.; 1 ♀, Snagov (Snagov Forest), 13 X 1979, S. R.; 1 spec., Călugăreni, 8 VI 1997, P. C.; 1 spec., Comana, 4 III 1998; P. Ș.; 1 ♀, Căciulați (forest, litter), 26 V 2001, S. D.; 1 ♂, Mihăilești (nest entrance of <i>Riparia riparia</i>), 18 VIII 2004, C. G.; 1 ♀, Padina Tătarului Forest (in humid litter of <i>Quercus cerris</i> and <i>Q. robur</i>), 4 V 2006; 1 ♂, Ogarca Forest (cow dung), 22 VI 2006; 1 ♂, 5 ♀♀, 6 IX 2006 (litter); 1 ♂, Bălteni (forest, litter), 24 VIII 2006; 9 ♀♀, Ghimpați (forest, litter), 6 IX 2006; S. M.
Oxytelinae Fleming, 1821		
44.	<i>Anotylus rugifrons</i> (Hochhuth, 1849)	1 ♂, Căciulați (forest, litter), 26 V 2001, S. D.
45.	* <i>Anotylus rugosus</i> (Fabricius, 1775)	3 ♂♂, Budești, 25 V 1979, A. G.

Table 1 (continued)

Nr. crt.	Subfamily/species	Material examined
46.	* <i>Anotylus sculpturatus</i> (Gravenhorst, 1802)	1 ♀, Snagov Forest, 12 X 1979, A. G.; 1 spec., Comana, 14 IX 1989, G. N.; 1 ♂, 1 ♀, București, 5 V 1997, S. M.; 1 ♂, 5 ♀♀, Căciulați (forest, litter), 26 V 2001; 1 ♂, 1 ♀, Florești (Sabar streamlet), 6 V 2002, P. C.; 1 ♀, 16 VI 2001, S. D.; 3 ♂♂, 11 ♀♀, Ogarca Forest (cow dung), 22 VI 2006, S. M.
47.	* <i>Anotylus tetracarınatus</i> (Block, 1799)	2 ♂♂, 1 ♀, Ogarca Forest (cow dung), 22 VI 2006, S. M.
48.	<i>Carpelimus bilineatus</i> Stephens, 1834	1 ♂, Ogarca Forest (temporarily flooded area), 6 IX 2006, S. M.
49.	* <i>Carpelimus corticinus</i> (Gravenhorst, 1806)	1 ♀, Ogarca Forest (temporarily flooded area), 22 VI 2006; 1 ♀, 6 IX 2006; S. M.
50.	* <i>Carpelimus impressus</i> (Lacordaire, 1835)	1 ♀, Padina Tătarului Forest (in humid litter of <i>Quercus cerris</i> and <i>Q. robur</i>), 4 V 2006; 1 ♂, Ogarca Forest (cow dung, near the temporarily flooded area), 22 VI 2006; S. M.
51.	* <i>Carpelimus nitidus</i> (Baudi di Selve, 1848)	2 ♂♂, Crucea de Piatră (pool shore with reed), 7 VII 2006, S. M.
52.	<i>Carpelimus obesus</i> (Kiesenwetter, 1844)	36 ♂♂, 42 ♀♀, Comana Forest (forest skirt, flooded land); 4 ♂♂, 3 ♀♀, Crucea de Piatră (pool shore with reed); 1 ♂, 1 ♀, Bila (canal bank with reed), 22 VI 2006, S. M.
53.	<i>Carpelimus rivularis</i> (Motschulski, 1860)	1 ♀, București-Herăstrău Park, 19 III 1991, H. T.; 5 ♂♂, 5 ♀♀, Crucea de Piatră (pool shore with reed), 7 VII 2006; 1 ♂, 3 ♀♀, Ogarca Forest (temporarily flooded area), 22 VI 2006; 1 ♂, 6 IX 2006; 3 ♂♂, 1 ♀, Bila (canal bank with reed), 22 VI 2006, S. M.
54.	<i>Coprophilus striatulus</i> (Fabricius, 1793)	1 spec., București-Herăstrău Park, 10 VI 1991, H. T.
55.	<i>Oxytelus laqueatus</i> (Marsham, 1802)	1 ♀, Snagov Forest, 12 X 1979, A. G.
56.	<i>Oxytelus migrator</i> Fauvel, 1904 (Fig. 2 B, C)	1 ♂, Ogarca Forest (cow dung), 22 VI 2006, S. M.
57.	<i>Platystethus arenarius</i> (Geoffroy, 1785)	1 ♂, Ogarca Forest (cow dung), 22 VI 2006, S. M.
58.	* <i>Platystethus cornutus</i> (Gravenhorst, 1802)	1 ♂, Călugăreni, 29 IV 1995, P. C.; 1 ♂, 1 ♀, Comana (forest skirt, flooded land), S. M.
59.	* <i>Platystethus nitens</i> (Sahlberg, 1832)	1 ♀, Florești (Argeș River), 4 V 1995, P. C.; 1 ♀, Brănești, 20 IV 1997; 1 ♂, Măgurele, 29 VIII 1997, P. Ș.; 1 ♀, Comana Forest, Izvorul cu Nuci (litter), 4 V-6 VI 2006, S. M.
60.	<i>Platystethus nodifrons</i> (Mannerheim, 1830)	1 ♀, București, 6 IV 1990, P. Ș.
Oxyporinae Fleming, 1821		
61.	* <i>Oxyporus rufus</i> (Linnaeus, 1758)	1 spec., Comana, 31 V 1956, N. Ș.; 3 specs, Mogoșoaia, 29 IV 1958, S. X., 9 V 1959, I. V.; 18 V 1984, G. V.; 1 spec., Roșu, 13 VI 1975, S. X.; 1 spec., Chitila (forest), 10 V 1958, R. A.; 1 spec., Pusnicu Forest, 8 V 1963, R. A.; Țigănești Forest, 26 IV 1966, R. A.; 1 spec., Otopeni, 1 VI 1966, S. A.; 1 ♂, Măgurele (forest), VI 2006, M. S.

Table 1 (continued)

Nr. crt.	Subfamily/species	Material examined
Steninae MacLeay, 1825		
62.	* <i>Stenus ater</i> Mannerheim, 1830	1 ♂, Măriuța, 5 IV 1966, S. A.; 1 ♂, Snagov Forest, 13 X 1979, S. R.; 1 ♂, 1 ♀, București, 1990; Gruiu-Căldărușani Forest, 19 IV 1997, P. Ș.
63.	* <i>Stenus boops</i> Ljungh, 1810	1 ♀, Comana Forest (permanent pool shore, with reed), 7 VI 2006, S. M.
64.	* <i>Stenus cicindeloides</i> (Schaller, 1783)	1 ♀, București, 4 VI 1990, under stone, P. Ș.; 1 ♀, Florești (Argeș River), 4 V 1995, P. C.
65.	* <i>Stenus humilis</i> Erichson, 1839	1 ♀, Căciulați (forest, litter), 26 V 2001, S. D.
66.	* <i>Stenus incrassatus</i> Erichson, 1839	1 ♀, Comana Forest (forest skirt, flooded land), 1 ♀, Crucea de Piatră (permanent pool shore with reed) 7 VI 2006; 1 ♂, Bila (canal shore with reed), 22 VI 2006, S. M.
67.	<i>Stenus longitarsis</i> Thomson, 1851	1 ♂, Mihăilești, 10 VIII 2004, C. G.
68.	* <i>Stenus morio</i> Gravenhorst, 1806	2 ♂♂, Călugăreni, 29 IV 1995 and 27 V 1995, P. C.; 1 ♂, Măgurele, 25 VIII 1997, P. Ș.; 1 ♀, Ogarca Forest (flooded area), 2 IX 2006, S. M.
69.	* <i>Stenus ochropus</i> Kiesenwetter, 1858	2 ♂♂, 5 ♀♀, Bălteni (forest, litter), 24 VIII 2006; 1 ♀, Ghimpați (forest, litter), 6 IX 2006, S. M.
70.	* <i>Stenus providus</i> Erichson, 1839	1 ♀, Comana Forest, 2 II 1977, A. G.; 1 ♀, Comana Forest (bank of Comana stream with a thin litter of <i>Acer</i> , <i>Fraxinus</i> , <i>Crataegus</i> , <i>Ulmus</i>), 4 V 2006; 2 ♂♂, 1 ♀, Crucea de Piatră (permanent pool shore with reed), 7 VI 2006, S. M.
71.	<i>Stenus solutus</i> Erichson, 1840	1 spec., Comana Forest, 3 V 1977, A. G.
Paederinae Fleming, 1821		
72.	* <i>Lathrobium brunnipes</i> (Fabricius, 1792)	1 ♂, Cernica (on rotten <i>Typha</i> sp.), 17 III 1991, P. Ș.
73.	* <i>Medon brunneus</i> (Erichson, 1839)	1 ♂, Căciulați (forest, litter), 14 VII 2001, S. D.
74.	<i>Paederus balcanicus</i> Koch, 1938	1 ♂, 1 ♀, Comana Forest, 19 X 1988, R. S.; 2 ♂♂, 1 ♀, Comana-Valea Gorbanului, 9 IV 2004, C. G.; 4 ♂♂, 7 ♀♀, Comana Forest (bank of Comana stream, with thin litter of <i>Acer</i> , <i>Fraxinus</i> , <i>Crataegus</i> , <i>Ulmus</i>), 4 V 2006, S. M.; 1 ♂, 1 ♀, Comana Forest, Izvorul cu Nuci, 4 V 2006; 1 ♀, 7 VI 2006, C. C.
75.	* <i>Paederus fuscipes</i> Curtis, 1826	1 spec., Chitila (forest), 10 V 1958; 1 spec., Băneasa Forest, 20 IV 1962; 1 spec., București, 5 X 1962, R. A.; 1 spec., Cernica, 8 V 1962, P. G. A.; 2 specs, Brănești, 12 V 1963, S. X.; 3 specs, Comana, 18 IX 1964, R. A.; 1 spec., București-Alexandriei Av., 1 X 1966, S. X.; 4 specs, București-Băneasa, 9 VII 1973, W. M.; 3 specs, Comana, 23 II 1977, A. G.; 1 spec., Căldărușani Forest, 9 VI 1978, A. G.; 1 spec., Comana, 10 VIII 1979; 2 specs, Snagov Forest, 12 X 1979; 1 spec., Budești, 25 V 1979, 6 specs, Dascălu (forest), 6 VIII 1980, S. R.; 1 ♂, 1 ♀, Comana, 8 IV 1994, P. Ș.; 1 spec., București-Străulești, 16 X 1994, P. C.; 1 ♀, Florești (Argeș River), 4 V 1995; 2 ♀♀, Călugăreni, 29 IV 1995; 3 ♂♂, 4 ♀♀, Călugăreni, 27 V 1995, P. C.; 1 ♂, Snagov 15 IV 1996, P. Ș.; 1 spec., Călugăreni,

Table 1 (continued)

Nr. crt.	Subfamily/species	Material examined
		4 V 1996, P. C.; 1 spec., București (Botanical Garden), 23 VI 1998, P. Ș.; 2 ♂♂, Călugăreni, 3 V 2004 and IX 2004, D. F.; 1 ♂, Băneasa Forest, 10 VII 2005, 1 ♀, București (Botanical Garden), 25 VIII 2005; P. E.; 1 ♂, Afumați (forest), 18 IV 2006; 1 ♂, Pasărea Forest (on the ground), 2 V 2006; 8 ♂♂, 2 ♀♀, Comana Forest (bank of Comana stream with a thin litter of <i>Acer</i> , <i>Fraxinus</i> , <i>Crataegus</i> , <i>Ulmus</i>), 4 V 2006, S. M.; 3 ♂♂, 1 ♀, 4 V 2006, C. C.; 1 ♀, Comana Forest, Izvorul cu Nuci (litter), 4 V-6 VI 2006, S. M.; 2 ♀♀, București-Izvor Park, 28 VI 2006, M. S.
76.	<i>*Paederus littoralis</i> Gravenhorst, 1802	1 spec., Băneasa Forest, 20 IV 1962, R. A.
77.	<i>*Paederus riparius</i> (Linnaeus, 1758)	1 ♀, Călugăreni, 29 IV 1995, P. C.; 5 ♀♀, Comana Forest (bank of Comana stream with a thin litter of <i>Acer</i> , <i>Fraxinus</i> , <i>Crataegus</i> , <i>Ulmus</i>), 4 V 2006; 1 ♀, Comana Forest (litter), 4 V-6 VI 2006, S. M.
78.	<i>*Rugilus subtilis</i> Erichson, 1840	1 ♂, Padina Tătarului Forest (litter of <i>Quercus cerris</i> and <i>Q. robur</i>), 4 V 2006; 1 ♀, Ogarca Forest (litter), 22 VI 2006, P. R.; 1 ♂, Ogarca Forest (litter), 6 IX 2006, S. M.
79.	<i>*Scopaeus laevigatus</i> (Gyllenhal, 1827)	2 ♂♂, 3 ♀♀, Ogarca Forest (flooded area), 22 VI 2006; 3 ♂♂, 2 ♀♀, 6 IX 2006 S. M.
80.	<i>Scopaeus pusillus</i> Kiesenwetter, 1843	1 ♀, București, 1991; 1 ♂, Comana, 14 III 1998, P. Ș.
81.	<i>Sunius fallax</i> (Lokay, 1919)	1 ♀, Padina Tătarului Forest (litter <i>Quercus cerris</i> and <i>Q. robur</i>), 4 V 2006; 1 ♂, Ogarca Forest (litter), 6 IX 2006, S. M.
82.	<i>*Tetartopeus quadratus</i> (Paykull, 1789)	1 ♀, Crucea de Piatră (permanent pool shore with reed), 7 VI 2006, S. M.
Staphylininae Latreille, 1802		
83.	<i>*Abemus chloropterus</i> (Panzer, 1796)	1 spec., Dumitrana Forest, VII 1990, P. Ș.; 1 ♀, Comana Forest (thin litter of maple, ash tree, hawthorn, elm tree), 7 VI 2006, S. M.
84.	<i>*Acylophorus glaberrimus</i> (Herbst, 1784)	1 ♀, Cernica (forest), 26 IV 1996, P. Ș.
85.	<i>Astrapaeus ulmi</i> (Rossi, 1790)	1 spec., Islaz, 28 IV 1966, S. A.; 1 ♀, București, 14 VIII 2002, S. M.
86.	<i>Bisnius nitidulus</i> (Gravenhorst, 1802)	1 ♀, București, 1991, P. Ș.
87.	<i>*Bisnius sordidus</i> (Gravenhorst, 1802)	1 ♂, Odăile, P. Ș.; 1 ♂, Florești (Sabar stream), 6 V 2002, P. C.
88.	<i>Bisnius subuliformis</i> (Gravenhorst, 1802)	1 ♂, Băneasa Forest, 1991, P. Ș.
89.	<i>Cafius xantholoma</i> (Gravenhorst, 1806)	2 ♂♂, 1 ♀, București, 16 VIII 1963, N. Ș.
90.	<i>*Creophilus maxillosus</i> (Linnaeus, 1758)	1 spec., Pasărea Forest, 28 IV 1955; 1 ♀, Băneasa Forest, 12 V 1956, S. N.; 1 spec., Islaz, 22 IV 1966, S. A.; 3 ♂♂, 2 ♀♀, Pasărea Forest, 2 VII 1967, S. N.; 2 specs, Băneasa Forest, 15 VII 1973, N. Ș.; 1 spec., București, 20 V 1992, P. Ș.
91.	<i>*Emus hirtus</i> (Linnaeus, 1789)	1 ♂, Pasărea Forest, 28 IV 1955, S. N.

Table 1 (continued)

Nr. crt.	Subfamily/species	Material examined
92.	<i>Gabrius femoralis</i> (Hochhuth, 1851)	1 ♀, Dascălu (forest, litter), 11 IV 2006, P. R.; 1 ♂, Pasărea Forest (litter), 18 IV-2 V 2006, S. M.
93.	* <i>Gabrius nigritulus</i> (Gravenhorst, 1802)	2 ♂♂, Ogarca Forest (flooded area), 22 VI 2006; 1 ♂, 6 IX 2006; 1 ♂, Bila (canal shore with reed), 22 VI 2006, S. M.
94.	<i>Gabrius osseticus</i> (Kolenati, 1846)	1 ♀, Budești, 25 V 1979, A. G.; 1 ♀, Comana Forest, VI 1992, P. Ș.; 1 ♂, Pasărea Forest (litter), 18 IV-2 V 2006, S. M.
95.	<i>Gabrius suffragani</i> Joy, 1913	1 ♂, 1 ♀, Ogarca Forest (flooded area), 22 VI 2006; 1 ♂, 1 ♀, 6 IX 2006, S. M.
96.	<i>Gauropterus fulgidus</i> (Fabricius, 1787)	1 spec., București, 25 VIII 1996, P. Ș.; 1 spec., București, 3 VI 2002, S. M.; 1 spec., București, 27 III 2005, M. I.
97.	<i>Gyrohypnus angustatus</i> Stephens, 1833	1 ♀, Padina Tătarului Forest; 4 V 2006, P. C.
98.	* <i>Gyrohypnus punctulatus</i> (Paykull, 1789)	1 ♀, București, 20 V 1991, Ș. P.
99.	* <i>Hypnogyra angularis</i> (Ganglbauer, 1895)	1 ♂, Braniștea, 26 IV 1997, P. Ș.
100.	* <i>Leptacinus batychrus</i> (Gyllenhal, 1827)	1 ♀, București, 16 VIII 1997, P. Ș.
101.	<i>Leptacinus pusillus</i> (Stephens, 1833)	1 ♂, Ghimpați (forest, litter), 6 IX 2006, S. M.
102.	* <i>Ocypus fulvipennis</i> Erichson, 1840	1 ♀, Islaz, 28 IV 1966, S. A.; 1 ♂, București, 14 X 1994, P. Ș.
103.	<i>Ocypus mus</i> (Brullé, 1832)	1 ♀, Ciolpani Forest, 8 X 1969; 1 spec., Băneasa Forest, 18 IX 1975, S. N.; 1 ♀, Comana-Grădinari forest range, 9 IX 1977, A. G. and 1 ♂, 13 IX 1979, D. A.; 23 ♂♂, 8 ♀♀, București-Băneasa, 2-15 X 1979, S. N.; 4 ♂♂, 4 ♀♀, Snagov (forest), 13 X 1979; A. G.; 1 ♀, Căciulați (forest, litter), 14 VII 2004, S. D.;
104.	* <i>Ocypus nitens</i> (Schrank, 1781)	1 ♂, Ștefăneștii de Jos, 24 IV 1953, S. X.; 1 spec., București-Băneasa, 7 V 1955, S. N.; 1 ♂, 1 ♀, Periș, 25 X 1956; 11 ♂♂, 1 ♀, Comana-Grădinari forest range, 23 III-3 V 1977 and 4 specs, 31 V 1977, A. G.; 1 spec., București, 14 X 1994, P. Ș.; 1 ♂, Pasărea Forest, 3 V 1998, P. C.; 3 ♂♂, Căciulați (forest, litter), 26 V 2001 and 1 ♀, 14 VII 2001, S. D.; 1 ♂, Gulia, 14 IV 2006, C. C.; 2 ♂♂, 1 ♀, Căldărușani Forest (litter de <i>Quercus cerris</i> and <i>Q. robur</i>), 11-18 IV 2006; 1 ♂, Pasărea Forest, 18 IV-2 V 2006; 1 ♂, Comana Forest, Izvorul cu Nuci, 4 V-6 VI 2006, S. M.
105.	<i>Ontholestes haroldi</i> (Eppelsheim, 1884)	1 spec., Comana, 1 V 1996, P. Ș.; 1 ♀, Pasărea Forest (litter), S. M.; 1 ♀, Padina Tătarului Forest, 4 V 2006, P. C.
106.	<i>Ontholestes murinus</i> (Linnaeus, 1758)	1 spec., București, VI 1994, P. Ș.; 1 ♂, Călugăreni, 27 V 1995, P. C.; 1 ♂, Căciulați (forest, litter), 17 VIII 2001, S. D.
107.	<i>Philonthus carbonarius</i> (Gravenhorst, 1802)	1 ♀, 2 ♂♂, Fundulea, 14 VI 1978; 2 ♂♂, Snagov, 13 X 1979, S. R.; 1 ♀, Odăile, 1991, P. Ș.; 1 ♂, București, 7 V 1998, S. M.; 1 ♂, Comana Forest, 7 VI 2006, P. C.

Table 1 (continued)

Nr. crt.	Subfamily/species	Material examined
108.	<i>Philonthus cognatus</i> Stephens, 1832	1 spec., Comana, 31 V 1956; 2 ♂♂, Fundulea, 12 VI 1978, S. R.; 1 ♀, Periș, 10 X 1991; 1 ♂, București, VIII 1992, P. Ș.
109.	<i>Philonthus confinis</i> Strand, 1941	1 ♀, Călugăreni, 11 V 1996, P. Ș.
110.	* <i>Philonthus concinnus</i> (Gravenhorst, 1802)	1 spec., București, 1991, P. Ș.; 3 ♂♂, Ogarca Forest (cow dung), 22 VI 2006, S. M.
111.	<i>Philonthus laminatus</i> (Creutzer, 1799)	1 ♀, București-Băneasa, 22 IV 1990, B. V.
112.	* <i>Philonthus micans</i> (Gravenhorst, 1802)	1 ♂, 1 ♀, Ogarca Forest (in flooded area), 22 VI 2006, S. M.
113.	<i>Philonthus punctus</i> (Gravenhorst, 1802)	2 ♂♂, 1 ♀, Cernica, 2 V 1962, D. I.
114.	* <i>Philonthus quisquiliarius</i> (Gyllenhal, 1810)	1 ♂, București, 25 VIII 1996, P. Ș.; 2 ♂♂, 4 ♀♀, Comana Forest (skirt of forest, flooded land), 7 VI 2006; 9 ♂♂, 13 ♀♀, Crucea de Piatră (permanent pool shore and canal bank), 7 VI 2006; 2 ♀♀, Ogarca Forest (flooded area), 22 VI 2006 and 1 ♂, 2 ♀♀, 6 IX 2006, S. M.
115.	<i>Philonthus succicola</i> Thomson, 1860	1 ♂, Comana-Grădinari forest range, 29 III-3 V 1977, A. G.; 1 ♂, București, VI 1998, P. Ș.
116.	* <i>Philonthus tenuicornis</i> Mulsant & Rey, 1853	1 ♂, Manafu Forest, 22 VI 2006, P. C.
117.	<i>Philonthus umbratilis</i> (Gravenhorst, 1802)	1 ♂, București, 25 VIII 1996; 1 ♂, București (Botanical Garden), 23 VI 1998, P. Ș.; 1 ♂, Crucea de Piatră (canal bank), 7 VI 2006, S. M.
118.	<i>Philonthus varians</i> (Paykull, 1789)	1 ♂, București, 1991; 1 ♂, Călugăreni, 11 V 1996, P. Ș.
119.	<i>Platydracus latebricola</i> (Gravenhorst, 1806)	1 ♂, Căciulați (forest, litter), 16 VI 2001, S. D.
120.	<i>Platydracus stercorarius</i> (Olivier, 1795)	1 ♂, București (yard of the Institute of Biology, litter), 5 VI 2006, M. S.
121.	<i>Quedius cinctus</i> (Paykull, 1790)	1 ♀, București, 10 VI 1963, R. A.; 1 ♀, București (under stone), 28 VIII 1990, P. Ș.
122.	* <i>Quedius cruentus</i> (Olivier, 1795)	1 ♂, Bolintin-Deal (under bark), 12 VIII 1990; 1 ♂, București, 5 VI 1993; 1 ♂, București, 25 VIII 1996, P. Ș.
123.	<i>Quedius fuliginosus</i> (Gravenhorst, 1802)	1 ♂, Căciulați (forest, litter), 14 VII 2004, S. D.
124.	<i>Quedius lateralis</i> (Gravenhorst, 1802)	1 ♂, Bănești (forest), 12 V 1963, S. X.
125.	* <i>Quedius ochripennis</i> (Ménétriés, 1832)	1 ♂, București, 10 VI 1963, R. A.; 1 ♂, București, 30 XI 1995, S. M.
126.	<i>Quedius suturalis</i> Kiesenwetter, 1845	1 spec., Brănești, 29 IV 1963, R. A.; 1 ♀, Cernica, 6 XII 1997, P. Ș.
127.	<i>Quedius puncticollis</i> (Thomson, 1867)	1 ♀, Comana, 18 IX 1964, R. A.
128.	<i>Quedius truncicola</i> Fairmaire & Laboulbène, 1856	1 ♀, Cernica (forest, on tree trunk), 9 IV 2006, P. E.
129.	* <i>Staphylinus caesareus</i> Cederhjelm, 1798	1 ♀, Budești, 15 V 1958, R. A.; 1 ♂, Andronache Forest, 17 IV 1959, S. X.; 1 ♂, București, 20 IV 1962; 2 ♀♀, Cernica, 17 IV 1963, R. A.; 1 ♀, Comana, 24 IV 1965, N. Ș.; 2 ♂♂, București, 4 V 1997 and 7 IX 1997, P. Ș.; 1 ♀, Comana, 9 IV 2004, C. G.; 1 ♂, Manafu Forest, 22 VI 2006, N. G.;
130	<i>Staphylinus dimidiaticornis</i> Gemminger, 1851	1 ♀, București, 4 V 1997, P. Ș.

Table 1 (continued)

Nr. crt.	Subfamily/species	Material examined
131	* <i>Staphylinus erythropterus</i> Linnaeus, 1758	1 ♀, Căciulați (forest, litter), 14 VII 2001, S. D.; 2 ♂♂, Comana Forest, Izvorul cu Nuci (litter), 4 V-6 VI 2006, S. M.
132.	<i>Tasgius pedator</i> (Gravenhorst, 1802)	1 ♂, 1 ♀, București, VI 1958, S. N.
133.	* <i>Xantholinus decorus</i> Erichson, 1839	1 ♀, București, 1991, P. Ș.; 1 ♂, Comana Forest, 10 IV 2005, C. B. C.
134.	<i>Xantholinus longiventris</i> Heer, 1839	1 ♀, București, 1991, P. Ș.; 1 ♂, Căciulați (forest, litter), 14 VII 2001, S. D.

Table 2

Rove beetle species of „A. L. Montandon” Collection, collected from București and Comana.

	Subfamily/Species	Collecting site	Specimen no/sex.	Original identification
Proteininae Erichson, 1839				
1.	<i>Megarthritis bellevoeyi</i> Saulcy, 1862	București	3 specs	<i>Megarthritis affinis</i> Miller, published in 1906 and 1908
Omaliinae MacLeay, 1825				
2.	<i>Acrolocha minuta</i> (Olivier, 1795)	București	2 ♂♂	<i>Acrolocha striata</i> (Grav.), published in 1906 and 1908
Aleocharinae Fleming, 1821				
3.	<i>Anaulacaspis nigra</i> (Gravenhorst, 1802)	Comana	1 spec.	<i>Falagria nigra</i> (Grav.)
4.	<i>Cordalia obscura</i> (Gravenhorst, 1802)	București	4 specs	<i>Cardiola obscura</i> (Grav.)
5.	<i>Deinopsis erosa</i> (Stephens, 1832)	Comana	2 specs	<i>Deinopsis erosa</i> (Steph.) published în 1906
6.	<i>Drusilla canaliculata</i> (Fabricius, 1787)	București	1 ♂	<i>Drusilla canaliculata</i> F., published in 1906
7.	<i>Falagria caesa</i> Erichson, 1837	București	4 specs	<i>Falagria sulcata</i> (Payk.)
8.	<i>Gyrophaena joyioides</i> Wüsthoff, 1937	Comana	2 ♀♀	<i>Gyrophaena bihamata</i> Thoms., published in 1906
9.	<i>Myllaena intermedia</i> Erichson, 1837	Comana	1 ♀	<i>Myllaena intermedia</i> Er., published in 1906
10.	<i>Nehemitropia lividipennis</i> Mannerheim, 1830	București	1 ♂	<i>Atheta sordida</i> Marsh., published in 1908
11.	<i>Oligota pusillima</i> (Gravenhorst, 1806)	București	1 ♂, 1 ♀	<i>Oligota pusillima</i> (Grav.), published in 1906; revised by Andreas Kapp
12.	<i>Oligota pumilio</i> Kiesenwetter, 1858	București	3 ♂♂, 1 ♀	<i>Oligota pusillima</i> (Grav.), revised by Andreas Kapp
Tachyporinae MacLeay, 1825				
13.	<i>Ischnosoma longicorne</i> (Mäklin, 1847)	Comana	1 ♂	<i>Mycetoporus longicornis</i> Mäklin, published in 1908
14.	<i>Sepedophilus testaceus</i> (Fabricius, 1793)	Comana	1 spec.	<i>Tachyporus testaceus</i> (F.), published in 1906 and 1908 under the name <i>Comurus pubescens</i> Payk.

Table 2 (continued)

	Subfamily/Species	Collecting site	Specimen no/sex.	Original identification
15.	<i>Tachinus corticinus</i> Gravenhorst, 1802	București Comana	5 specs; 1 spec.	<i>Tachinus collaris</i> Grav., published in 1906 and 1908
16.	<i>Tachyporus hypnorum</i> (Fabricius, 1775)	Comana	3 specs	<i>Tachyporus hypnorum</i> (F.), published in 1906
Oxytelinae Fleming, 1821				
17.	<i>Anotylus rugosus</i> (Fabricius, 1775)	Comana	1 ♀	<i>Oxytelus rugosus</i> (F.), published in 1906 and 1908
18.	<i>Anotylus tetracarlinatus</i> (Block, 1799)	București Comana	2 ♂♂, 1 ♀; 3 ♂♂	<i>Oxytelus tetracarlinatus</i> (Block), published in 1908
19.	<i>Carpelimus corticinus</i> (Gravenhorst, 1806)	Comana	1 spec.	<i>Trogophloeus corticinus</i> (Grav.), published in 1906, 1908
20.	<i>Oxytelus piceus</i> (Linnaeus, 1767)	București	1 ♂	<i>Oxytelus piceus</i> (L.)
Oxyporinae Fleming, 1821				
21.	<i>Oxyporus rufus</i> (Linnaeus, 1858)	Comana	2 specs	<i>Oxyporus rufus</i> (L.), published in 1906
Steninae MacLeay, 1825				
22.	<i>Stenus ater</i> Mannerheim, 1830	București	1 ♂	<i>Stenus ater</i> Mannh., published in 1908
23.	<i>Stenus ochropus</i> Kiesenwetter, 1858	Comana	2 ♀♀	<i>Stenus ochropus</i> Kiesw., published in 1908 under the name <i>Stenus Erichsoni</i> Rye
24.	<i>Stenus pallitarsis</i> Stephens, 1833	Comana	2 ♀♀	<i>Stenus pallitarsis</i> Steph., published in 1906
Paederinae Fleming, 1821				
25.	<i>Achenium depressum</i> (Gravenhorst, 1802)	Comana	1 ♂, 3 ♀♀	<i>Achenium depressum</i> (Grav.), published in 1906
26.	<i>Achenium humile</i> (Nicolai, 1822)	Comana	1 ♂	<i>Achenium humile</i> (Nicolai), published in 1906
27.	<i>Astenus lyonessius</i> (Joy, 1908)	Comana București	2 ♂♂	<i>Astenus angustatus</i> (Payk.), published in 1906 and 1908
28.	<i>Cryptobium fracticorne</i> (Paykull, 1800)	Comana	3 ♂♂, 1 ♀	<i>Cryptobium fracticorne</i> (Payk.)
29.	<i>Lathrobium elongatum</i> (Linnaeus, 1767)	Comana	2 ♂♂, 1 ♀	<i>Lathrobium elongatum</i> (L.), published in 1906 and 1908
30.	<i>Lathrobium furcatum</i> Czwalina, 1888 (Fig. 2 D)	Comana	1 ♂	<i>Lathrobium elongatum</i> (L.)
31.	<i>Leptobium dimidiatum</i> Gridelli, 1926 (Fig. 3 A, B, C)	Comana	1 ♂, 4 ♀♀	<i>Doliceon biguttulus</i> (Lac.), published in 1906 and 1908
32.	<i>Medon ferrugineus</i> (Erichson, 1839)	Comana	1 ♂	<i>Medon ferrugineus</i> (Er.), published in 1908
33.	<i>Pseudomedon obsoletus</i> (Nordmann, 1837)	Comana	2 ♀♀	<i>Medon obsoletus</i> (Nordmann), published in 1906 and 1908

Table 2 (continued)

	Subfamily/Species	Collecting site	Specimen no/sex.	Original identification
34.	<i>Rugilus orbiculatus</i> (Paykull, 1789)	București Comana	1 ♂, 2 ♀♀; 1 ♀	<i>Stilicus orbiculatus</i> (Payk.), published in 1906 and 1908
35.	<i>Rugilus subtilis</i> Erichson, 1840	Comana	1 ♀	<i>Stilicus rufipes</i> (Germar, 1836), published in 1906 and 1908
36.	<i>Scopaeus laevigatus</i> (Gyllenhal, 1827)	Comana	1 ♂	<i>Scopaeus laevigatus</i> (Gyllh.), published in 1906 and 1908
37.	<i>Sunius melanocephalus</i> (Fabricius, 1792)	Comana	1 ♂, 3 ♀♀	<i>Medon melanocephalus</i> (F.), published in 1906 and 1908
38.	<i>Sunius fallax</i> (Lokay, 1919)	Comana București	2 ♂♂, 1 ♀; 2 ♂♂, 1 ♀	<i>Medon melanocephalus</i> (F.), published in 1906 and 1908
39.	<i>Tetartopeus quadratus</i> (Paykull, 1789)	Comana București	3 ♂♂, 1 ♀; 1 ♀	<i>Lathrobium quadratum</i> (Payk.), published in 1906 and 1908
40.	<i>Tetartopeus terminatus</i> (Gravenhorst, 1802)	Comana	1 ♀	<i>Lathrobium terminatum</i> Grav., published in 1906
Staphylininae Latreille, 1802				
41.	<i>Acylophorus glaberrimus</i> (Herbst, 1784)	Comana	1 ♀	<i>Acylophorus glaberrimus</i> (Herbst), published in 1906 and 1908 under the name <i>A. glabricollis</i> Lac.
42.	<i>Gyrophypnus punctulatus</i> (Paykull, 1789)	București	2 ♀♀	<i>Xantholinus punctulatus</i> (Payk.), published in 1908
43.	<i>Philonthus concinnus</i> (Gravenhorst, 1802)	București	1 ♀	<i>Philonthus concinnus</i> (Grav.), published in 1908
44.	<i>Philonthus micans</i> (Gravenhorst, 1802)	Comana	2 specs	<i>Philonthus micans</i> (Grav.), published in 1906, 1908
45.	<i>Quedius cinctus</i> (Paykull, 1790)	Comana	1 ♂	<i>Quedius cinctus</i> (Payk.), published in 1906
46.	<i>Staphylinus caesareus</i> Cederhjelm, 1798	Comana	1 ♂	<i>Staphylinus caesareus</i> Ced., published in 1906

DISCUSSIONS

This paper completes the knowledge on the rove beetle fauna diversity of București and of the adjacent areas, after almost 80 years since the last published papers. 26.6 % of the species mentioned in literature were found again, and 84 species are added to the initial list.

Basing on the types of the habitats and microhabitats studied in 2001 and 2006 I pointed out some ecological categories of rove beetles:

- hygrophilous, paludicolous species, collected from the edge of the temporary pools, which remained after flooding periods, in the deciduous forests: *Aleochara haematoptera*, *Gnypeta ripicola*, *Carpelimus corticinus*, *Stenus morio*, *Scopaeus laevigatus*, *Gabrius nigrutilus*, *G. suffragani*, *Philonthus micans*, *Ph. quisquiliarius*;

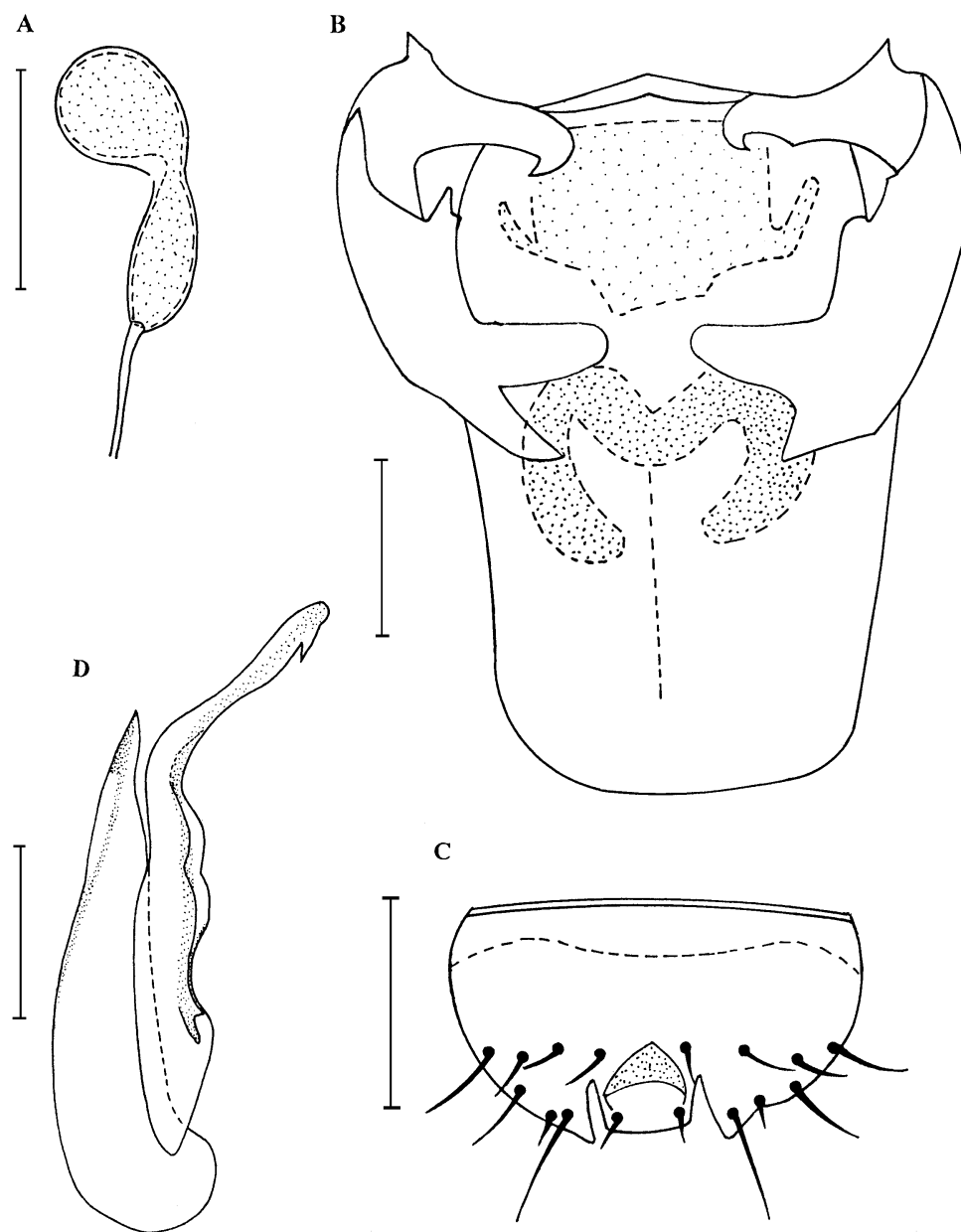


Fig. 2 – *Ilyobates bennetti* Danisthorpe: A – spermatheca; *Oxytelus migrator* Fauvel: B – aedeagus (ventral view); C – sternite IX (male); *Lathrobium furcatum* Czwaliņa: D – aedeagus (lateral view). Scale: 0.5 mm.

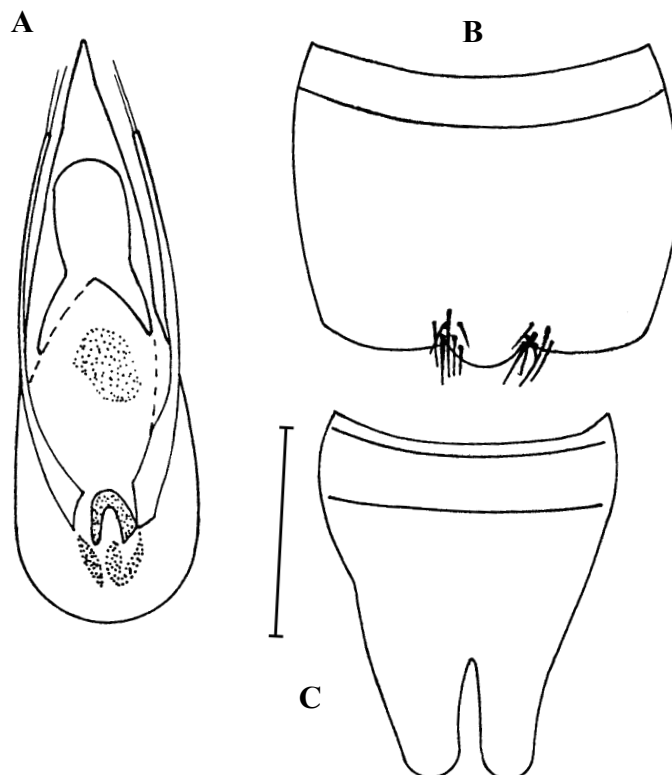


Fig. 3 – *Leptobium dimidiatum* Gridelli: A – aedeagus (ventral view); B – sternite VII (male); C – sternite VIII (male). Scale: 0.5 mm.

- hygrophilous, ripicolous, paludicolous species, from the edge of the permanent pools: *Carpelimus obesus*, *C. rivularis*, *Stenus boops*, *St. incrassatus*, *St. providus*, *Tetartopeus quadratus*, *Philonthus umbratilis*, *Tachyusa coarctata*;
- ripicolous species from the shore of the Comana stream, in deciduous forest, with a thin litter: *Paederus balcanicus*, *P. fuscipes*, *P. riparius*;
- silvicolous, hygrophilous species which live in litter: *Omalium caesum*, *O. rivulare*, *Aleochara curtula*, *A. erythroptera*, *Atheta fungi*, *A. orbata*, *Liogluta longiuscula*, *Oxypoda acuminata*, *Zyras collaris*, *Tachyporus hypnorum*, *Stenus ochropus*, *Medon brunneus*, *Sunius fallax*, *Rugilus subtilis*, *Gabrius femoralis*, *Ocytus nitens*;
- mycetophilous species: *Gyrophana hanseni*, *Atheta crassicornis*, *Oxyporus rufus*;
- coprophilous, stercoricolous species collected from the cow dung: *Nehemitropia lividipennis*, *Anotylus sculpturatus*, *A. tetracarinatus*, *Oxytelus migrator*, *Platystethus arenarius*, *Philonthus concinnus*;
- nidicolous species: *Haploglossa nidicola* (specimens collected from nests of *Riparia riparia*);
- corticolous species: *Quedius truncicola*.

After the revision of the specimens of “A. L. Montandon” Collection, which belong to 5 rove beetle species, I identified 8 species, as follows:

- three specimens identified as *Lathrobium elongatum* (L.), belong to this species, the fourth one, a male, belongs to *Lathrobium furcatum* Czwal.;
- the two male specimens identified as *Astenus angustatus* (Payk.) belong to *Atenus lyonessius* (Joy);
- the specimens identified as *Dolicaon biguttulus* (Lac.), belong to *Leptobium dimidiatum* Grid., known only in Romania, Georgia and Turkmenistan, as yet (Assing, 2005);
- as regards the specimens identified as *Medon melanocephalus* (F.), a part of them belongs to *Sunius fallax* (Lokay);
- the study of the specimens initially identified as *Oligota pusillima* (Grav.), in fact, belong to two species: *Oligota pusillima* (Grav.) and *O. pumilio* Kiesw (revision made by Mr. Andreas Kapp, Austria).

Conclusions

The study of the București biodiversity and its surroundings has to be a priority because the multidimensional development of the area generates a strong impact on the habitats and taxonomical structure of flora and fauna.

Basing on the remarks made above, I can assert that the subfamilies Staphylininae (38.8%) and Aleocharinae (21.6%) are better represented in the area, for the time being, followed by Oxytelinae (12.68%), Paederinae (8.2%), Steninae (7.46%), Tachyporinae (5.97%) and Omaliinae (5%).

The following rove beetle ecological categories were identified: paludicolous, ripicolous, silvicolous, mycetophilous, coprophilous, nidicolous, corticolous.

ACKNOWLEDGEMENTS

I am grateful to Mrs Luminița Enache for drawing the map of collecting sites and for the drawings traced in China ink. I also thank to the anonymous referees for their constructive comments on my manuscript and for their publishing advice.

NOI DATE ASUPRA FAUNEI DE STAFILINIDE (COLEOPTERA: STAPHYLINIDAE) DIN BUCUREȘTI ȘI ZONELE LIMITROFE

REZUMAT

Lucrarea prezintă noi date faunistice asupra stafilinidelor din București și zonele limitrofe, pe baza materialului colectat în perioada 1955 - 2006 și a reviziei exemplarelor colectate de A. L. Montandon și conservate în „Colecția de coleoptere palearticte” a muzeului. Sunt semnalate 161 specii de stafilinide, prezentate în 2 tabele. Se menționează pentru prima dată prezența stafilinidelor în 32 situri. Pe baza habitatelor și a microhabitatelor investigate au fost identificate câteva categorii ecologice de stafilinide. Pentru *Lathrobium furcatum* Czwalina, 1888, *Leptobium dimidiatum* Gridelli, 1926, *Oxytelus migrator* Fauvel, 1904 sunt prezentate desenele caracterelor sexuale masculine, iar pentru *Ilyobates bennetti* Danisthorpe desenul spermatecii.

LITERATURE CITED

- ASSING, V., 1999 – Über *Astenus longelytratus* Palm, *A. brevelytratus* Lohse und *A. lyonessius* (Joy) (Coleoptera, Staphylinidae). Entomologische Blätter, 95 (1): 32-34.
- ASSING, V., 2005 – A revision of the genus *Leptobium* Casey (Coleoptera: Staphylinidae: Paederinae). Stuttgarter Beiträge zur Naturkunde Serie A (Biologie), nr. 673: 1-182.
- ASSING, V., M. SCHÜLKE, 1999 – Supplemente zur mitteleuropäischen Staphylinidenfauna (Coleoptera, Staphylinidae). Entomologische Blätter, 95 (1): 1-31.
- BOHÁČ, J., 1985 a – Review of the subfamily Paederinae (Coleoptera, Staphylinidae) in Czechoslovakia. Acta entomologica bohemoslovaca, 82: 360-385.

- BOHÁČ, J., 1985 b – Review of the subfamily Paederinae (Coleoptera, Staphylinidae) of Czechoslovakia. *Acta entomologica bohemoslovaca*, 82: 431-467.
- COIFFAIT, H., 1974 – Coléoptères Staphylinidae de la région Paléartique occidentale. II. Sous famille Staphylininae, Tribus Philonthini et Staphilinini. *Nouvelle Revue d'Entomologie*, 4 (4) supplément: 1- 593.
- COIFFAIT, H., 1978 – Coléoptères Staphylinidae de la région Paléartique occidentale. III. Sous famille Staphylininae, Tribu Quediini, Sous famille Paederinae, Tribu Pinophilini. *Nouvelle Revue d'Entomologie*, 8 (4) supplément: 7- 364.
- FLECK, E., 1906 – Die Coleopteren Rumäniens. *Bulletin de la Société des Sciences de Bucarest-Roumanie*, 3-4: 3-336.
- HURMUZACHI, C., 1901 – Catalogul Coleopterelelor culese în România în anii 1899-1900 de membrii Societății Naturaliștilor și determinate de Constantin Hurmuzachi (Cernăuți). *Buletinul Societății Studenților Naturaliști, București*, 2: 3-8. (in Romanian)
- JAQUET, M., 1898 – Faune de la Roumanie. Coléoptères récoltés par M. Jaquet en 1897 et déterminés par M. E. Poncy, entomologiste à Geneve. *Bulletin de la Société des Science de Bucarest-Roumanie*, 7 (6): 3-5.
- JAQUET, M., 1900 a – Faune de la Roumanie. Coléoptères récoltés par Mr. le Dr. M. Jaquet et déterminés par Mr. E. Poncy à Geneve. *Buletinul Societății de Științe*, 9 (4): 392-400.
- JAQUET, M., 1900 b – Faune de la Roumanie. Coléoptères récoltés en 1899 par M. Jaquet et déterminés par Mr. E. Poncy à Geneve. *Buletinul Societății de Științe*, 9 (6): 754-762.
- JAQUET, M., 1901 – Faune de la Roumanie. Coléoptères récoltés en 1899 par Mr. le Dr. M. Jaquet et déterminés par Mr. E. Poncy à Geneve. *Buletinul Societății de Științe*, 10 (5): 483-497.
- JAQUET, M., 1902 – Faune de la Roumanie. Coléoptères récoltés par Mr. le Dr. M. Jaquet et déterminés par Mr. E. Poncy à Geneve. *Buletinul Societății de Științe*, 11 (4): 449-457.
- LOHSE, G. A., 1964 – Staphylinidae I (Micropeplinae bis Tachyporinae). *In: H. Freude, K. Harde, G. A. Lohse, Die Käfer Mitteleuropas, Goecke & Evers, Krefeld*, 4: 1-247.
- LOHSE, G. A., 1974 – Staphylinidae II (Hypocyphtinae und Aleocharinae). *In: H. Freude, K. Harde, G. A. Lohse, Die Käfer Mitteleuropas, Goecke & Evers, Krefeld*, 5: 1-304.
- LOHSE, G. A., 1989 – Ergänzungen und Berichtigungen zu Freude-Harde-Lohse, 4 und 5. *In: G. A. Lohse, W. H. Lucht, Die Käfer Mitteleuropas*, 12: 121-240.
- MANOLACHE, C. I., 1930 – Colecția Coleopterelelor din laboratorul de Zoologie Descriptivă din București donată de W. Knechtel senior. *Buletinul Societății Studenților Naturaliști București*, 1: 5-10. (in Romanian)
- MONTANDON, A. L., 1906 – Notes sur la faune entomologique de la Roumanie. (Coleoptera). *Bulletin de la Société des Sciences de Bucarest – Roumanie*, 16 (1-2): 30-80.
- MONTANDON, A. L., 1908 – Notes sur la faune entomologique de la Roumanie. Additions au Catalogue des Coléoptères. *Buletinul Societății de Științe, București*, 17: 67-118.
- PÂRVU, C., 2008 – Premises and objectives of the project „Study of the fauna of București and its surroundings.” *Travaux du Muséum National d'Histoire Naturelle “Grigore Antipa”*, 51: 353-361.
- ROUBAL, J., 1909 – Additions au catalogue des Coléoptères de la Roumanie. Staphylinidae. *Buletinul Societății de Științe, București*, 18 (1): 131-136.

Received: February 4, 2008
Accepted: March 7, 2008

Muzeul Național de Istorie Naturală „Grigore Antipa”
Șos. Kiseleff nr. 1, 011341 București 2, România
e-mail: mstan@antipa.ro