

Travaux du Muséum National d'Histoire Naturelle «Grigore Antipa»	Vol. LI	pp. 327–334	© Novembre 2008
---	---------	-------------	--------------------

***BODOTRIA PARVUI* N. SP. (CRUSTACEA: PERACARIDA)
FROM THE TURKISH WATERS OF THE AEGEAN SEA
[Results of “Focida” - 2006 expedition]**

IORGU PETRESCU

Abstract. A new species of the genus *Bodotria*, *Bodotria parvui* n. sp., collected from the Aegean Sea, from Yenifoça (Turkey), during „Focida” – 2006 expedition is described. It belong to the subgenus *Bodotria* Goodsir, with the uropod endopod uniaarticulated. *Bodotria parvui* n. sp. resembles somehow *B. arenosa leloeuffi* Corbera & Garcia-Rubies, 1998 from the West of the Mediterranean basin.

Résumé. On décrit une nouvelle espèce du genre *Bodotria*: *Bodotria parvui* n. sp. collectée de la Mer Egée, de Yenifoça (Turquie) par l'expédition „Focida” - 2006. Elle appartient au sous-genre *Bodotria* Goodsir, avec l'endopode de l'uropode uniaarticulé. *Bodotria parvui* n. sp. présente des ressemblances avec *B. arenosa leloeuffi* Corbera & Garcia-Rubies, 1998 de l'ouest du bassin de la Méditerranée.

Key words: Cumacea, Aegean Sea, new species, description.

INTRODUCTION

For the time being, cumaceans of the Aegean Sea, Turkish littoral, were studied by Reyss (1973, 1974), and from the Turkish scientists by Katagan (1982, 1983), Kokataş (1978) (papers cited also by Băcescu, 1988) and Kirkim et al. (2005). Katagan (1983) reported 27 species of seven families and 13 genera, locality Yenifoça not being included in the station list. Katagan (1983) reported only three species of *Bodotria* from the Turkish waters, one belonging to the subgenus *Bodotria* (Goodsir, 1843), *B. arenosa mediterranea* (Steuer, 1936), and two to the subgenus *Atlantobodotria* Petrescu (1998), *B. pulchella* (Sars, 1878) and *B. scorpoides* (Montagu, 1804), all of them from the littoral of the Aegean Sea. Recently, Kirkim et al. (op. cit.) studied also the crustaceans of the facies with *Padina pavonia* from Foça, finding only the species *Cumella limicola* Sars, 1879. “Grigore Antipa” National Museum of Natural History (Bucharest), in collaboration with NGO – “Oceanic Club” Society of Oceanographical Exploration and Protection of the Marine Environment (Constanța) organized an expedition at the Turkish littoral of the Aegean Sea in 2006, on this occasion collecting also marine samples; a sample from a station included a new cumacean species, identified as belong to the genus *Bodotria*.

MATERIAL AND METHOD

The material was collected within the theme “Romanian contributions to the research of the Mediterranean fauna”, led by Dr. Corneliu Pârnu. Field trips made during the „Focida 2006” project was made in collaboration with NGO – „Oceanic Club” and „Grigore Antipa” National Museum of Natural History, in West Turkey, within the period 29th of July – 7th of August 2006.

The zoological material consisted in 10 hydrobiological samples from the running and stagnant waters and in 20 marine samples from the Aegean Sea, collected by the members of the expedition: M. Ionescu, R. Popescu-Mirceni, E. and C. Chera, S. Grigore, R. Bujor, R. Nica, M. Iacob, S. Someşan and R. Zaharia. From these samples only one included cumaceans, the sample from the station 31 from Yenifoça (Fig. 1).



Fig. 1 – Map of collecting place, Yenifoça, Turkish coast of Aegean Sea.

The specimen is preserved in the collection of type crustaceans of „Grigore Antipa” National Museum of Natural History (MGAB).

RESULTS

Family Bodotriidae

Bodotria parvui n. sp.

(Figs 2-4)

Material: Holotype immature female, no. MGAB CUM 1629. *Type locality:* Aegean Sea, Turkey, Yenifoça, 38°43'51" N, 26°43'32" E, sta. 31, 5.08.2006, 2-3 m depth, collected by R. Popescu-Mirceni.

Derivatio nominis. The species is dedicated to honour of Dr. Corneliu Pârvu, Head of Terrestrial Fauna Department of the „Grigore Antipa” National Museum of Natural History, Bucharest, leader of research team of the museum in „Focida” - 2006 expedition, world specialist in Diptera, as a sign of deeply gratitude.

Description of immature female (holotype)

Body (Fig. 2 A), moderately calcified rugged integument on carapace, scaly on rest and appendices, length: 3.4 mm.

Carapace (Fig. 2 A), 0.24 of entire body length, 1.4 times longer than high, pseudorostrum little exceeds ocular lobe, notch present, ocular lobe eyeless.

Pereon (Fig. 2 A), only articles 2-5 are visible, dorsal keel on each article.

Pleon (Fig. 2 A), little shorter than half of body, similar dorsal keels on pleonites 1-4.

Antenna 1 (Fig. 2 B), very robust peduncle, first article, shorter than other two combined, main flagellum with two articles, minute accessory flagellum, one-articled.

Mandible (Fig. 2 C), pars incisiva with four teeth, lacinia mobilis with three teeth, 13 strong plumose setae between lacinia and massive, truncated, pars molaris.

Maxilla 1 (Fig. 2 D), outer lobe with a plumose seta and nine stout terminal setae, inner lobe with four different shaped setae; long palpus, narrowed in its distal part, with two short filaments.

Maxilla 2 (Fig. 2 E), terminal articles, little longer than protopodus with long simple curved stout setae, 14 simple setae on inner margin of protopodus.

Maxilliped 1 (Fig. 3 A), six plumose setae on inner margin of basis, a pair of retinaculae on endite, carpus, second longest article, with seven inflated setae interspersed with simple setae on inner margin, a plumose long seta on its outer distal margin, large propodus with a similar outer seta, large dactylus with two simple terminal setae.

Maxilliped 2 (Fig. 3 B), basis with a strong feathered seta on inner distal corner, a similar one on inner margin of merus, carpus, second longest article, massive propodus with simple setae on inner margin, two plumose ones on outer margin, dactylus with a pectinate robust terminal seta.

Maxilliped 3 (Fig. 3 C), basis, 1.8 times as long as rest of articles combined, outer process that reached half of merus, with two apical plumose setae, and four on its inner margin, a simple short on distal outer margin of merus, carpus shorter than merus, with two plumose setae on inner margin, short and bulky propodus, with two forked setae on inner margin, dactylus 1.3 times as long as propodus, with a long terminal pectinate seta.

Pereopod 1 (Fig. 4 A), basis 1.4 times as long as rest of articles combined, a long plumose seta on distal outer corner, merus 1.7 times as long as ischium, carpus twice longer than merus and propodus, dactylus 1.3 times as long as propodus, with a long terminal simple seta.

Exopods, two pairs.

Pereopod 2 (Fig. 4 B), basis 1.1 times as long as rest of articles combined, merus as long as carpus, a short robust pectinate seta on outer margin, carpus 0.76 of merus length, with two short pectinate outer setae, dactylus 1.3 times as long as propodus, with three short terminal setae.

Pereopods 3-5 (Fig. 4 C-E), with progressively shorter basis, half of pereopod in 3rd pair, carpus little longer than merus, dactylus with a short robust terminal simple seta.

Uropod (Fig. 4 F, G), peduncle 1.5 times as long as last pleonite, 2.2 times as long as its rami, serrate inner margin, rami with serrate margins, two-articled exopod, as long as endopod, with a terminal sensory robust seta, endopod, one-articled, with two short robust sensory setae on inner margin and terminal robust one.

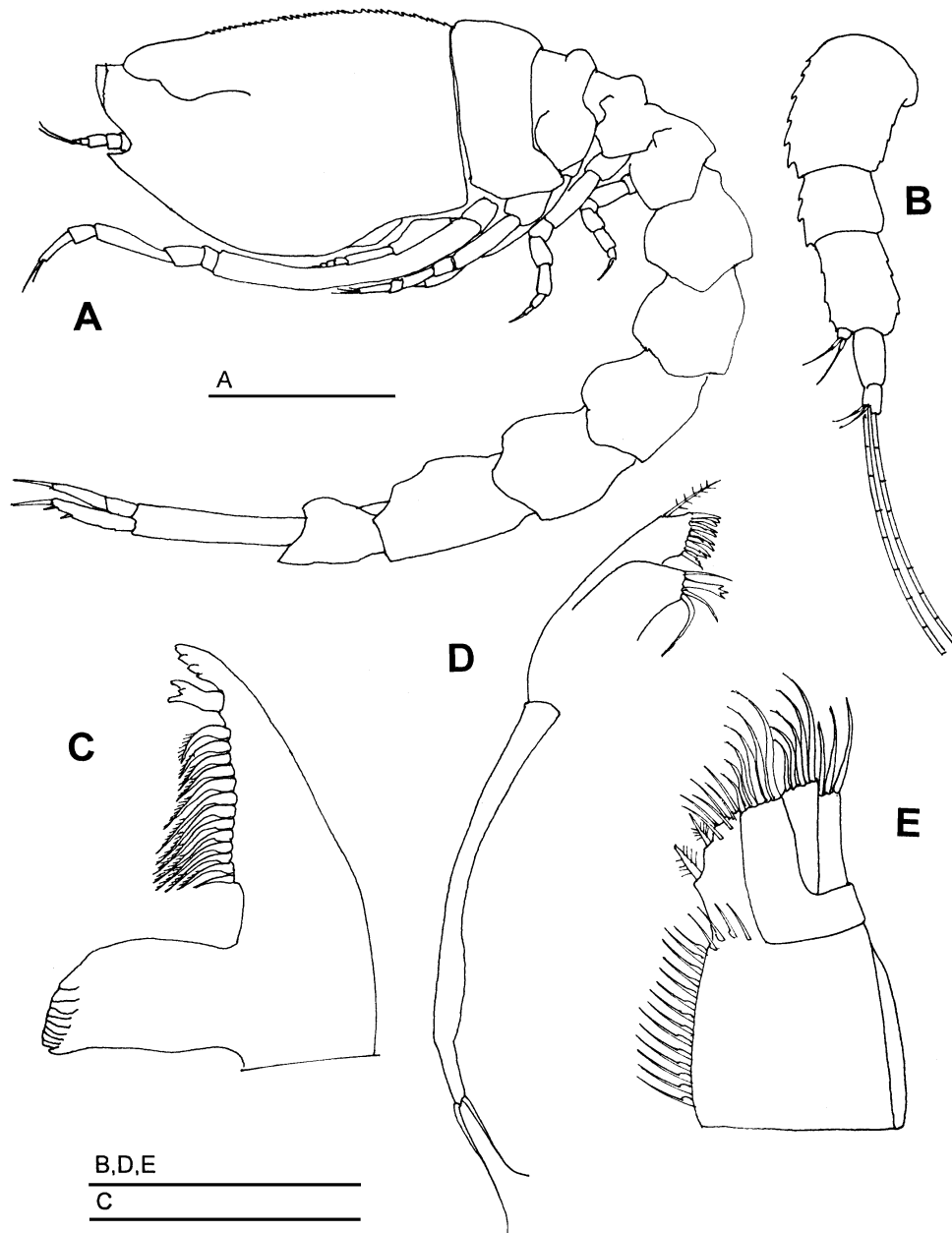


Fig. 2 – *Bodotria parvui* n. sp. Holotype female: A, body, lateral view; B, antenna 1; C, mandible; D, maxilla 1; E, maxilla 2. Scales (in mm): A 0.5; B, D, E 0.1; C 0.2.

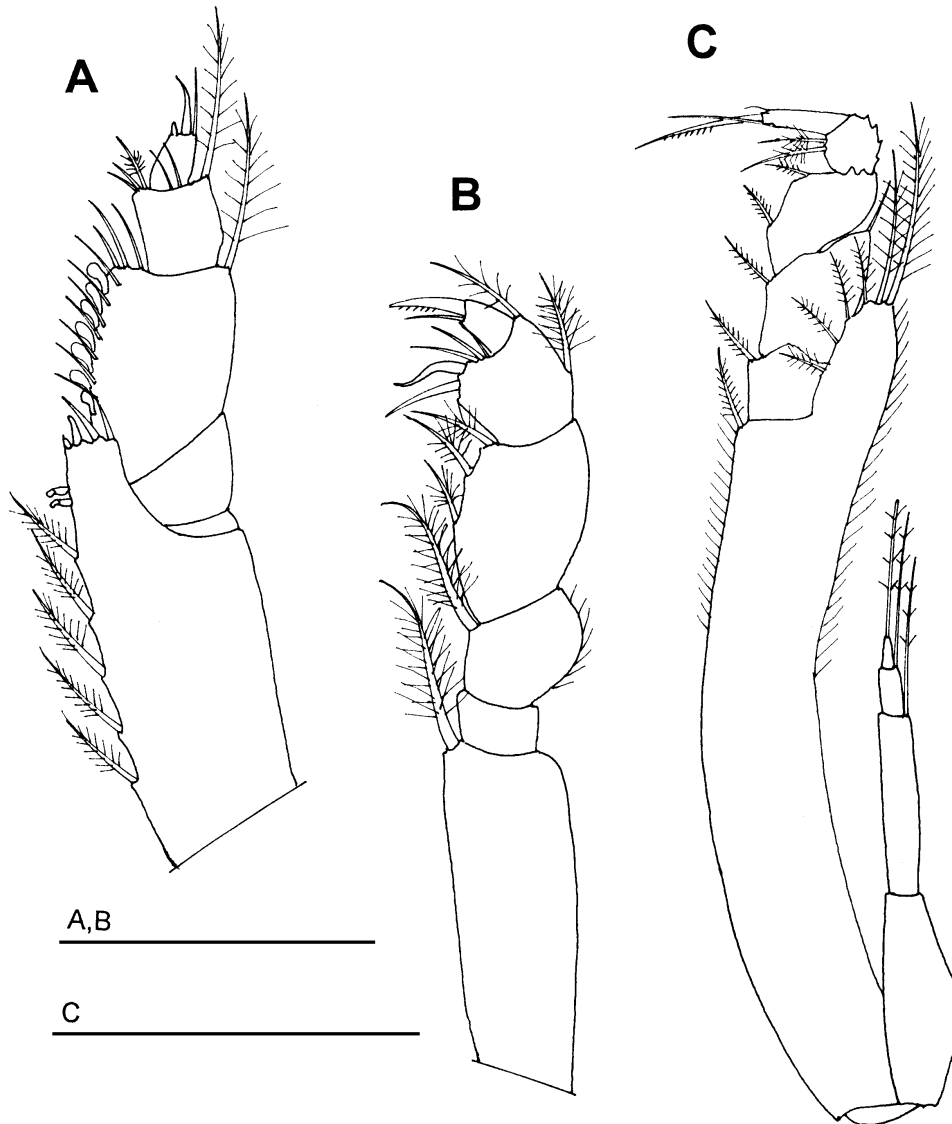


Fig. 3 – *Bodotria parvui* n. sp. Holotype female: A, maxilliped 1; B, maxilliped 2; C, maxilliped 3. Scales (in mm): A, B 0.1; C 0.3.

Male, unknown.

Remarks. There is only one Mediterranean species known from subgenus *Bodotria* with uropodal endopod one-articled, *B. arenosa* (Goodsir, 1843) with two subspecies, *B. a. mediterranea* (Steuer, 1936) distributed in the eastern part of basin (including the Aegean and the Black Sea) and *B. a. leleuffi* Corbera & Garcia-Rubies, 1998, from western part, mentioned from Banyuls, France (Le Loeuff & Intes, 1977) and the Medes Islands, Spain (Corbera & Garcia-Rubies, 1998). *B. parvui* n. sp. seems to be much closer related with *B. a. leleuffi* due to absence of

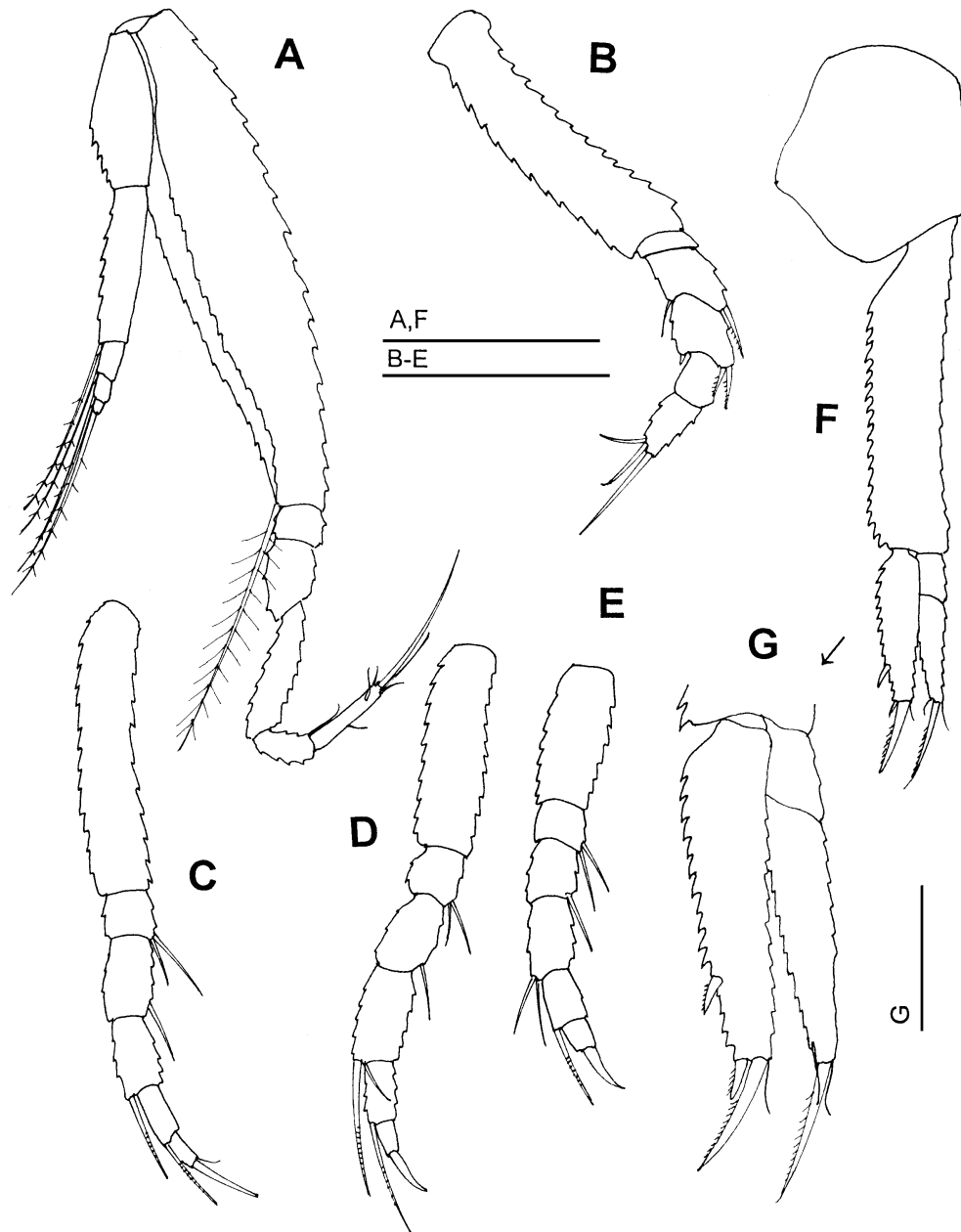


Fig. 4 – *Bodotria parvui* n. sp. Holotype female: A, pereopod 1; B, pereopod 2; C, pereopod 3; D, pereopod 4; E, pereopod 5; F, uropod; G, uropodal rami, magnified. Scales (in mm): A, F 0.3; B-E 0.2; G 0.1.

visual elements. It mainly differs with: absence of lateral carina on carapace, maxilliped 3 with longer basis (ratio basis : rest of maxilliped = 1.8 versus 1.5), pereopod 1 with longer terminal seta, uropodal peduncle shorter (ratio uropodal peduncle : 6th pleonite = 1.5 versus 2). The new species also resembles *B. glabra* Jones (Jones, 1955) from the Atlantic, SW African coast, also eyeless and without lateral carina on carapace, but with slender appendices and more setae on uropodal endopod.

Key for species and subspecies of *Bodotria* from Mediterranean Sea.

1. Uropodal endopod with one article subgenus *Bodotria* Goodsir, 1843 2
- Uropodal endopod with two articles subgenus *Atlantobodotria* Petrescu, 1998 .. 5
2. Ocular lobe with visual elements 3
- Ocular lobe without visual elements *parvui* n. sp.
3. Endopod of uropod with a plumose seta on outer margin 4
- Endopod of uropod without plumose setae *arenosa arenosa* Goodsir, 1843
4. Endopod of uropod with 3-5 setae on inner margin
..... *a. mediterranea* (Steuer, 1836)
- Endopod of uropod with 6 setae on inner margin
..... *a. leloeuffi* Corbera & Garcia-Rubies, 1998
5. Carapace with one lateral carina 6
- Carapace with two lateral carinae *pulchella* (Sars, 1878)
6. Carapace with high dorsal carina *gibba* (Sars, 1879)
- Carapace without high carina 7
7. Carapace like an ogive in dorsal view *scorpioides* (Montagu, 1804)
- Carapace like a palette knife in dorsal view *intermedia* Loeuff & Intes, 1977

ACKNOWLEDGEMENTS

My deepest gratitude to my colleague Dr. Corneliu Pârău for the moral support during my great physical problems from 2005 and 2006 and for his friendship he showed me during numerous field trips; I am more than grateful to Mr. Răzvan Popescu-Mirceni („Oceanic Club”) who collected the material; my posthumous thanks to late Acad. Mihai Băcescu for his patience and highly competent advisers and for his papers on Cumacea he offered to me; to Dr. Tuncer Katagan (Ege University, Izmir, Turkey) for kind information about present status of knowing of Cumacea from Turkish waters; to anonymous reviewer for revising my manuscript and to my colleague Mihaela Barcan-Achim who kindly arrange my text for publication, at least, but not the last, to my patience and highly devoted wife, Angela.

BODOTRIA PARVUI N. SP. (CRUSTACEA: PERACARIDA)

DIN APELE TURCEȘTI ALE MĂRII EGEE

[Rezultatele expediției „Focida” - 2006]

REZUMAT

Cumaceele din Marea Egee, litoralul Turciei, au fost relativ puțin studiate. Din genul *Bodotria* au fost semnalate doar trei specii: *B. arenosa mediterranea* (Steuer, 1936), *B. pulchella* (Sars, 1878) și *B. scorpioides* (Montagu, 1804). Din materialul colectat din apele turcești ale Mării Egee de către membrii expediției românești „Focida” (2006) este descrisă o specie nouă, *Bodotria parvui* n. sp. de la Yenifoça. Aceasta are caracteristic lipsa elementelor vizuale, absența unei carene laterale pe carapace, o carenă dorsală pe pereon și primele patru articole pleonale și endopodul uropodal cu un singur articol, ceea ce o particularizează între speciile genului, fiind mai apropiată morfologic de *B. arenosa leloeuffi* Corbera & Garcia-Rubies, 1998 din Mediterana occidentală și de *B. glabra* Jones, 1955 din Oceanul Atlantic de sud vest.

LITERATURE CITED

- BĂCESCU, M., 1988 – Cumacea I. (Fam. Archaecumatidae, Lampropidae, Bodotriidae, Leuconidae). *In: Crustaceorum catalogus, Pars 7: 34-49.* H.-E. Gruner, L.B. Holthuis (eds), SPB Academic Publishing. The Hague.
- CORBERA, J., A. GARCIA-RUBIES, 1998 – Cumaceans (Crustacea) of the Medes Islands (Catalonia, Spain) with special attention to the genera *Bodotria* and *Iphinoe*. *Scientia Marina*, 62 (1-2): 101-112.
- GOODSIR, H., 1843 – Description of the genus *Cuma* and of the new genera nearly allied to it. *Edinburgh New Philosophy Journal*, 34: 119-180.
- JONES, N. S., 1955 – Cumacea of the Benguela current. *Discovery Reports*, 27: 279-291.
- KATAGAN, T., 1982 – Cumacés nouveaux pour la Méditerranée orientale. *Crustaceana*, 43 (3): 313-315.
- KATAGAN, T., 1983 – Recherches systématiques et écologiques sur les cumacés (Peracarida, Crustacea) littoraux de la mer Egée de Turquie. *Ege University Faculty of Science Journal, Series B*, 6 (1): 9-18.
- KIRKIM, F., A. KOKATAŞ, T. KATAGAN, M. SEZGIN, A. S. ATEŞ, 2005 – Crustacean Biodiversity of *Padina pavonia* (L.) facies along the Aegean coasts of Turkey. *Turkish Journal of Zoology*, 29: 159-166.
- KOKATAŞ, A., 1978 – İzmir Körfezi kayalik sahillerinin bentik formlari üzerinde kalitatif ve kantitatif arastirmalar. *Ege Üniversitesi Fen Fakültesi Monografiler Serisi*, Izmir, 12: 1-93.
- LE LOEUFF, P., A. INTES, 1977 - Les *Bodotria* (Crustacea, Cumacea) des mers d'Europe et des côtes occidentales de l'Afrique tropicale. *Bulletin du Muséum National d'Histoire Naturelle*, 347 (498): 1137- 1164.
- PETRESCU, I., 1998 - Cumaceans (Crustacea: Cumacea) collected by the expedition of "Grigore Antipa" Museum of Natural History from the coasts of Tanzania (1973-1974). Part I. Family Bodotriidae. *Travaux du Muséum National d'Histoire Naturelle "Grigore Antipa"*, 40: 227-310.
- REYSS, D., 1973 – Distribution of Cumacea in the deep Mediterranean. *Deep-Sea Research*, 20: 119-123.
- REYSS, D., 1974 - Résultats scientifiques de la Campagne „Polymede II“ du N. O. „Jean Charcot“ en Mer Jonienne et en Mer Egée (avril-mai, 1972). *Cumacés. Crustaceana*, 27 (2): 216-222.

Received: February 28, 2008

Accepted: April 17, 2008

Muzeul Național de Istorie Naturală "Grigore Antipa"
Șos. Kiseleff nr.1, 011321 București 2, România
e-mail: iorgup@antipa.ro