

<i>Travaux du Muséum National d'Histoire Naturelle</i> «Grigore Antipa»	Vol. XLVIII	pp. 147–176	© 30 Dec. 2005
--	-------------	-------------	-------------------

## DIPTERA FROM THE GREEN CORRIDOR OF THE DANUBE (ROMANIA)

CORNELIU PÂRVU

**Abstract.** We present the list of the dipterans mentioned in literature, completed with the data from the material collected from the Romanian bank of the Danube, in 2004 (including 14 islets), between Porțile de Fier – upstream, and Oltenița – downstream. The list includes 366 species (of 48 families) – 17 species are mentioned for the first time in Romania.

**Résumé.** On présente la liste des diptères mentionnés en littérature, complétée avec les données du matériel capturé sur la rive roumaine du Danube, en 2004 (14 îlots y compris), entre Porțile de Fier – en amont, et Oltenița – en aval. La liste inclut 366 espèces (de 48 familles) – 17 espèces sont mentionnées pour la première fois en Roumanie.

**Key words:** diptera, Danube, Romanian bank.

### INTRODUCTION

During the period April and June 2004, I made several field trips in the flooding bank and the islets of the Romanian bank of the Danube, between Calafat (upstream) and Oltenița (downstream), within “PHARE RO 0103 – 02 Cross Border CO – Operation Programme Romania – Bulgaria”. A very rich dipterological material was collected.

To the list of the identified species I added all data found in literature for the area Porțile de Fier (Iron Gates, Ada-Kaleh island included – former island which lays now on the bottom of Porțile de Fier dam-lake) – Oltenița, thus drawing up a unique list which represents the faunal aspect of an insufficient studied area.

The floodplain of the Danube is a marsh system with reed, channals, partially flooded forests of elm, oak, willows, limes, and poplar and acacia plantations.

The dam, built more than 40 years ago, reduced considerably the floodplain; along the river there are some islets, usually afforested or suffocated by the Virginia creeper.

Data from literature begin with the description of a new tachinid species from Turnu-Severin, *Billaea adelpha* by Loew (1873), and continue during 1962–2003, when other scientists recorded 152 species in 34 papers. In our turn, we bring to light recent data on 266 identified species, collected during 2004. Relatively a few data from the two lists superposed for the same species (21 species), therefore the final list includes 366 species (48 families) known from the area, for the time being.

### MATERIAL AND METHOD

Most of the material was collected by the author with the entomological net, to which some specimens collected by his colleagues (Dr. Eckbert Schneider, Dr. Melanya Stan, Dr. Mihai Stănescu), using the net or Barber traps, are added.

---

English translation by Mihaela Barcan Achim.

The sites where the material was recorded or mentioned in literature are marked in a map (Fig. 1).

The families and genera were phylogenetically ordered and the species, alphabetically. Collecting data respect the chronological succession.

On the margin of the list, the information from literature is marked with a circle (○), the new species to the Romanian fauna, with points (●), and the rare species, not only in Romania but also within all their range, with "R". The distribution of the unknown species in Romania is marked by the sigles from the catalogues of the Palaearctic dipterans, published by Soós & Papp (1992).

The identifications were made according to the literature the author had at his disposal: fauna fascicles published by the Romanian Academy, the hand book of the insects from the European side of the ex-USSR (Shtakel'berg & Narchuk, 1969, 1970), Erwin Lindner's collection, "Die Fliegen der Palaarktischen Region", the identification keys of the Polish insects "Klucze do oznaczania owadów Polski", published after 1960, the fauna fascicle of the series Fauna Hungariae, published by the Academy Publishing House from Budapest, after 1970, according to different other papers as that one on the Tephritidae of Bulgaria, written by Drensky (1943), or on Culicidae of Bulgaria, by Bozhkov (1991). I made as many dissections on genitalia as the specialized illustration permitted. A large part of the material was compared with the species from the scientific collections of „Grigore Antipa” National Museum of Natural History (Bucharest).

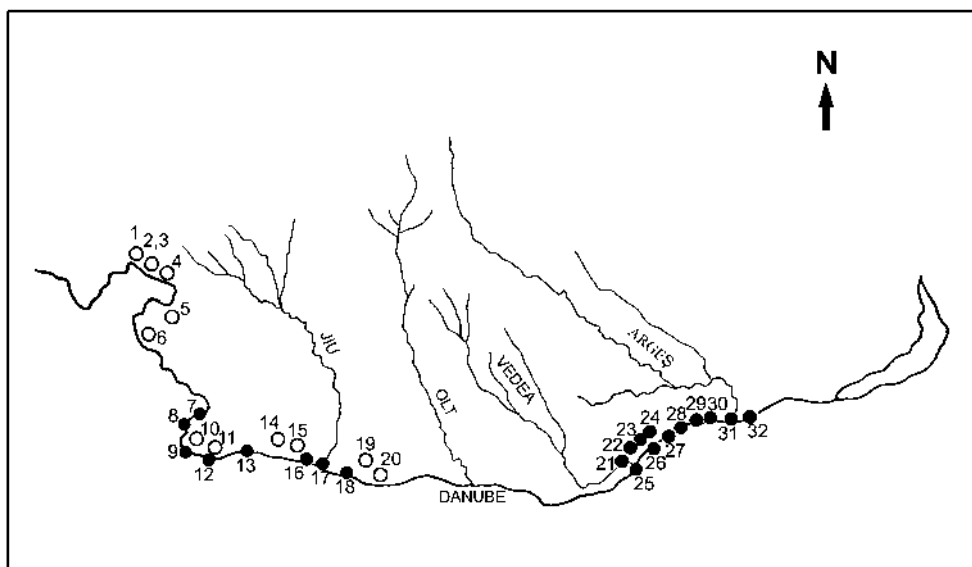


Fig. 1 – Sketch with the recording and collecting sites within the Romanian sector of the Danube: ○ – data from literature; ● – data from the material; 1, Ada – Kaleh island; 2, 3, Alior and Cerneți; 4, Drobeta Turnu Severin; 5, Scapau; 6, Ostrovul Mare islet; 7, Acalia islet; 8, Pietrișul islet; 9, Nebuna islet; 10, Ciupercenii Noi; 11, Desa; 12, Vana islet; 13, Gâtanul islet; 14, Negoii; 15, Bistreț; 16, Copănița islet; 17, Gura Jiului; 18, Cărăbulea islet; 19, Dabuleni; 20, Potelu Lake; 21, Pietroșani; 22, 23, 24, Cetățuia, Vedeia, Malu; 25, Cama, Dinu islets; 26, Slobozia islet, afforested bank, fish farm; 27, Mocanul islet; 28, Penciu forest; 29, Elena islet; 30, Lung islet (I, II); 31, Gura Argeșului; 32, Albina islet.

## RESULTS

## THE TAXONOMICAL AND DISTRIBUTIONAL LIST

## LIMONIIDAE

*Symplecta (s. str.) hybrida* (Meigen, 1804): 1 ♀ Penciu forest, 22.VI., km 480, GPS 003, 1 ♀, Lung I islet (19 h), 22.VI., GPS 009.

*Dicranomyia modesta* (Meigen, 1818): 1 ♂, Gâtanul islet, 16.V., km 726, 3 ♂♂, Lung I islet (19 h), 22.VI., GPS 009, 5 ♀♀, Gura Argeşului, 23.VI., GPS 012 A.

*Limonia phragmitidis* Schrnk, 1781: 2 ♀♀, Gâtanul islet, 16.V., km 725, GPS 022, 1 ♀, Gâtanul islet, 16.V., km 726, 2 ♂♂, 2 ♀♀, Vana islet, 16.V., km 737, GPS 017, 4 ♂♂, 1 ♀, Nebuna islet, 16.V., km 751, GPS 016, 1 ♀, Carabulea islet, 17.V., km 688, GPS 028, 1 ♀, Gura Jiului, 17.V., km 692, GPS 021, 1 ♂, 3 ♀♀, Copănița islet, 17.V., km 696, GPS 017, 45 ♂♂, 25 ♀♀, Pietrișul islet, 16.V., km 760, GPS 010, 12 ♂♂, 4 ♀♀, Acalia islet, 16.V., km 766, GPS 003, 1 ♀, Elena islet, 22.VI., GPS 006.

## TIPULIDAE

*Nephrotoma appendiculata* (Pierre, 1919): 5 ♂♂, 1 ♀, Pietrișul islet, 16.V., km 766, GPS 010, 2 ♂♂, 1 ♀, Gura Jiului, 17.V., km 692, GPS 021.

*N. cornicina* (Linnaeus, 1758): 1 ♂, Penciu forest, 22.VI., km 480, GPS 003, 1 ♂, Lung I islet (19 h), 22.VI., GPS 009.

*N. quadrifaria* (Meigen, 1804): 1 ♂, Elena islet, 22.VI., GPS 006.

• *N. questfalia questfalia* Westhoff, 1880: 3 ♂♂, Mocanul islet, 21.V., GPS 001, 4 ♂♂, 1 ♀, Lung I islet, 22.VI., GPS 009, 2 ♂♂, 2 ♀♀, Gura Argeşului, 23.VI., GPS 012 A. My drawings on genitalia (Fig. 2) are similar to those given by Oosterbroek (1978). Distribution: “well known in western Europe” (Oosterbroek, op. cit.) excepting Switzerland and Czechoslovakia; little known in southern Europe.

*N. scalaris* (Meigen, 1818): 1 ♀, Mocanul islet, 21.VI., GPS 001.

*Tipula (Lunatipula) bispina* Loew, 1873: 2 ♂♂, Vedea (Furnica), 29.V.–3.VI. (Fig. 3) – Barber traps, leg E. Schneider.

*Tipula (L.) fascipennis* Meigen, 1818: 2 ♂♂, Mocanul islet, 21.VI., GPS 001.

*Tipula (L.) lunata* Linnaeus, 1758: 12 ♂♂, Gura Jiului, 17.V., km 692, GPS 021, 5 ♂♂, Copănița islet, 17.V., km 696, GPS 017, 1 ♂, 6 ♀♀, Pietrișul islet, 16.V., km 760, GPS 010, 1 ♀, Lung I islet, 22.VI., GPS 009.

*Tipula (L.) mellea* Schummel, 1833: 1 ♂, Gâtanul islet, 16.V., km 725, GPS 022, 1 ♂, Nebuna islet, 16.V., km 751, GPS 016, 1 ♂, 1 ♀, Pietrișul islet, 16.V., km 760, GPS 010, 4 ♂♂, Gura Jiului, 17.V., km 692, GPS 017, 5 ♂♂, 5 ♀♀, Copănița islet, 17.V., km 696, GPS 017, 1 ♂, Lung I islet, 22.VI., GPS 009. Distribution in Romania: only in the Danube Delta.

◦ *Tipula (s. str.) orientalis* Lackschewitz, 1930: 1 ♂, Gâtanul islet, 16.V., km 725, GPS 022, 1 ♂, 3 ♀♀, Pietrișul islet, 16.V., km 760, GPS 010, Potelu (Erhan, 1962).

*Tipula (L.) helvola* Loew, 1873: 2 ♂♂, Mocanul islet, 21.VI., GPS 001 (identified after Mannheims & Theowald, 1980).

*Tipula (L.) soosi* Mannheims, 1954: 7 ♂♂, 1 ♀, Vedea, 27.VI., GPS 016 (flying in mass).

*Tipula (L.) truncata* Loew, 1873: 1 ♂, Vedea (Furnica), 29.V.–3.VI., km 517, Barber traps, leg. E. Schneider.

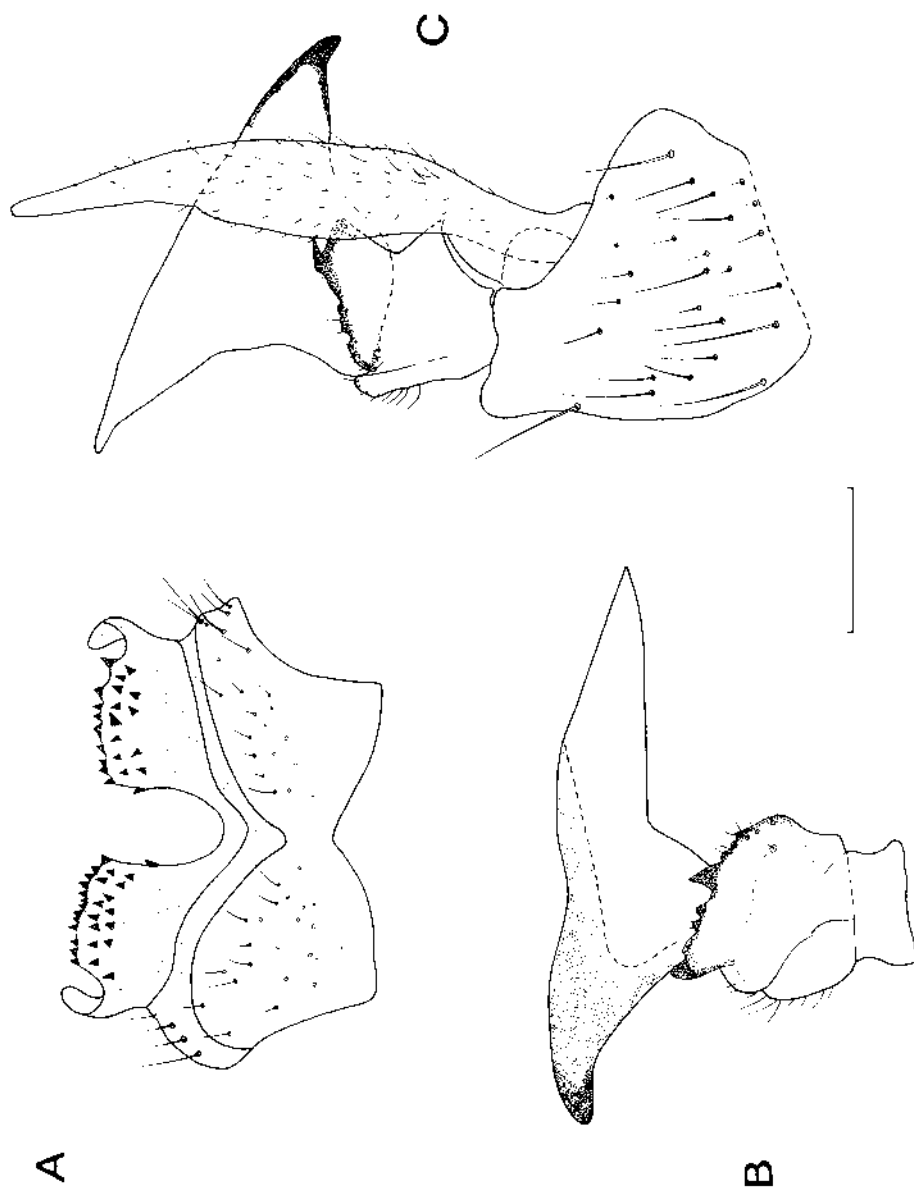


Fig. 2 – *Nephrotoma quesifalica quesifalica* Westhoff, ♂. A, posterior extension of tergite IX, dorsal view; B, inner dististyle; C, outer and inner dististyle. Scale: 0.2 mm.

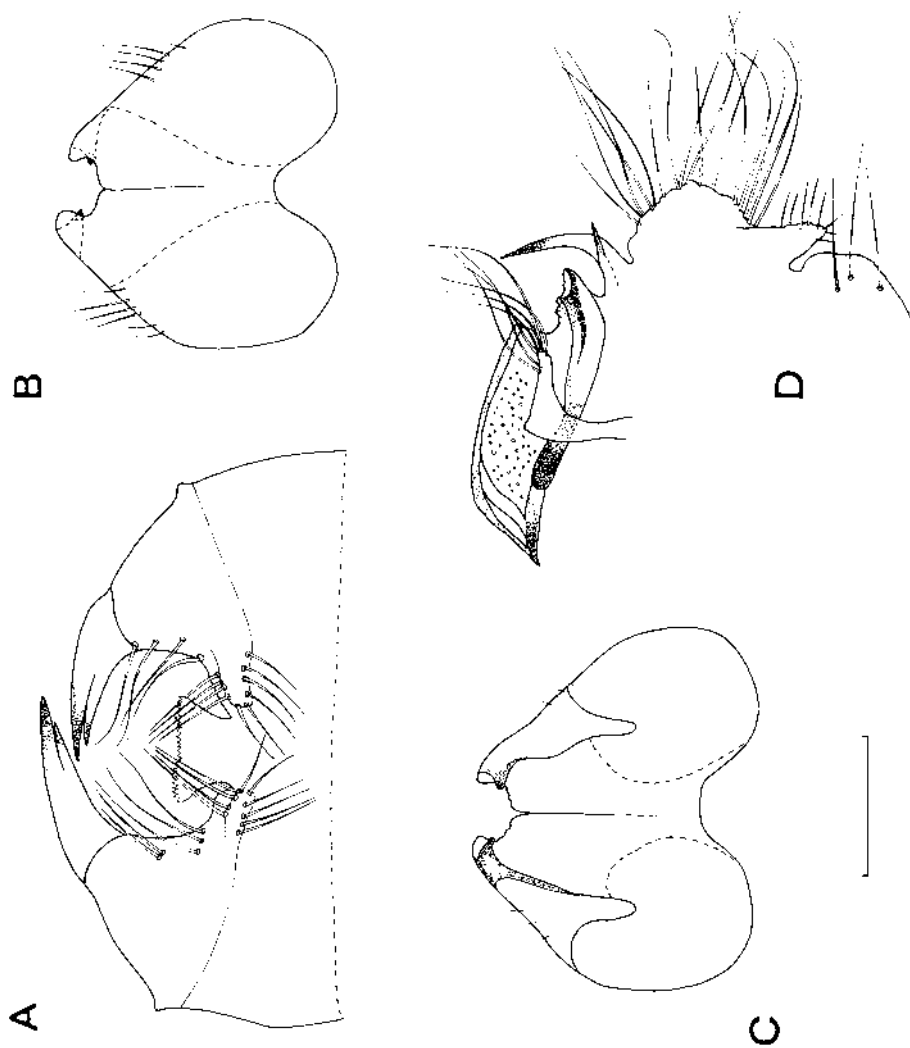


Fig. 3 – *Tipula (Lumatipula) bispina* Loew, ♂. A, sternite VIII; B, tergite IX, inner side; C, tergite IX, dorsal view; D, inner appendages. Scale: 0.5 mm.

## BIBIONIDAE

○ *Bibio hortulanus* (Linnaeus, 1758): 1 ♂, Vedea, 27.IV., km 510, 1 ♂, Pietroșani, 28.IV., GPS 001, Oltenița (Iacob, 1980).

○ *B. johannis* (Linnaeus, 1767): Ada-Kaleh (Mărgărit, 1975), Ada-Kaleh (Iacob, 1980).

○ *B. marci* (Linnaeus, 1758): Ada-Kaleh (Mărgărit, 1975), Alior, Cerneți, Scăpău, Turnu Severin (MH) (Iacob, 1980).

*Dilophus bispinosus* Lundstrom, 1913: 1 ♀, Albina islet, 23.VI., GPS 001.

○ *D. febrilis* (Linnaeus, 1758): Ada-Kaleh (Mărgărit, 1975).

## KEROPLATIDAE

*Orfelia nemoralis* (Meigen, 1818): 1 ♂, Vedea, 27.IV., km 510, 1 ♂, Pietrișul islet, 16.V., km 760, GPS 010, 1 ♂, Albina islet, 23.VI., GPS 001.

## MYCETOPHILIDAE

R • *Sciophila tenuis* (Winnertz, 1863): 1 ♂, 2 ♀♀, Albina islet, 23.VI., GPS 001. Distribution: Europe: ? D.

*Clastobasis alternans* (Winnertz, 1863): 2 ♀♀, Slobozia islet, 21.VI., leg. M. Stan, 1 ♂, Elena islet, 22.VI., GPS 006, 1 ♂, 1 ♀, Lung I islet, 22.VI., GPS 009, 7 ♂♂, 7 ♀♀, Albina islet, 23.VI., GPS 001, 27 ♂♂, 6 ♀♀, Gura Argeșului, 23.VI., GPS 012 A.

*Epycпта aterrима* (Zetterstedt, 1852): 1 ♂, Lung II islet, 22.VI., GPS 010.

• *Mycetophila strigata* Staeger, 1840: 1 ♂, 1 ♀, Gura Argeșului, 23.VI., GPS 012 A. Distribution: Europe: CS, D, DK, GB, NL, PL, SF; Nearctic Region.

*Platurocypta testata* (Edwards, 1925): 1 ♂, Malu, 27.IV., GPS 014, 1 ♀, Lung I islet, 22.VI., GPS 009.

## SCIARIDAE

○ *Bradysia brevispina* Tuomikoski, 1960: Ada-Kaleh (Hondru, 1975).

## CECIDOMYIIDAE

○ *Bayeriola capitigena* (Bremi, 1847): Ada-Kaleh (Neacșu, 1975).

○ *Parepidosis mamaevi* Neacșu, 1968: Drobeta-Turnu Severin (Neacșu, 1968).

○ *Ozирhincus longicollis* Rondani, 1840: Ada-Kaleh (Neacșu, 1975).

○ *Dasineura astragalorum* (Kieffer, 1909): within all Iron Gates area (Neacșu, 1975).

○ *D. crataegi* (Winnertz, 1853): within all Iron Gates area (Neacșu, 1975).

○ *D. irregularis* (Bremi, 1847): within all Iron Gates area (Neacșu, 1975).

○ *D. rosaria* (Loew, 1850): Ada-Kaleh (Neacșu, 1975).

○ *D. sisymbrii* (Schrank, 1803): within all Iron Gates area (Neacșu, 1975).

○ *D. terminalis* (Loew, 1850): Ada-Kaleh (Neacșu, 1975).

○ *Rhopalomyia baccarum* (Wachtl, 1883): Ada-Kaleh (Neacșu, 1975).

○ *Acodiplosis inulae* (H. Loew, 1847): Ada-Kaleh (Neacșu, 1975).

○ *Clinodiplosis cilicrurus* (Kieffer, 1889): Ada-Kaleh (Neacșu, 1975).

## CULICIDAE

The material, collected in a huge number, consists in many species from which I identified only a few. In Romania, 55 species are known (Nicolescu, 1995).

*Aedes (s. str.) cinereus* Meigen, 1818: 50 ♂♂, 50 ♀♀, Malu, 27.IV., km 502, GPS 014.

*Aedes (Aedimorphus) vexans* Meigen, 1830: 50 ♂♂, 50 ♀♀, Malu, 27.IV., km 502, GPS 014, 20 ♂♂, Nebuna islet, 16.V., km 751, GPS 016, 1 ♂, Gâtanul islet, 16.V., km 725, GPS 022, 10 ♂♂, Cama islet, 7.VI., GPS 004.

*Aedes (Ochlerotatus) annulipes* (Meigen, 1830): 10 ♀♀, Nebuna islet, 16.V., km 751, GPS 016, 5 ♀♀, Cama islet, 7.VI., GPS 004.

*Aedes (O.) caspius* (Pallas, 1771): 10 ♂♂, 5 ♀♀, Malu, Vedea-dam, 29.IV., km 502, 508, 510.

*Aedes (O.) cataphylla* Dyar, 1916: 10 ♀♀, Nebuna islet, 16.V., km 751, 2 ♀♀, Cama islet, 7.VI., GPS 004.

*Aedes (O.) excrucians* (Walker, 1856): 2 ♀♀, Gâtanul islet, 16.V., GPS 022, 2 ♀♀, Cama islet, 7.VI., GPS 004.

*Aedes (O.) flavescens* (Müller, 1764): 2 ♂♂, Cetățuia, 26.IV., GPS 007, leg. M. Stan, C. Pârvu.

*Aedes (O.) punctor* (Kirby in Richardson, 1873): 1 ♀, Cama islet, 7.VI., GPS 004.

*Aedes (O.) refiki* Medgid, 1928: 2 ♀♀, Cama islet, 7.VI., GPS 004.

○ *Phlebotomus balcanicus* Theodor, 1958: Ada-Kaleh (Lupașcu & Dăncescu, 1975).

#### CHIRONOMIDAE

○ *Cricotopus annulator* Goetghebuer, 1927: Ada-Kaleh (Albu & Cure, 1975), under *C. bituberculatus* Goetgh.

○ *C. bicinctus* (Meigen, 1818): Ada-Kaleh (Albu & Cure, op. cit.).

○ *C. triannulatus* Macquart, 1926: Ada-Kaleh (Albu & Cure, op. cit.).

○ *Eukiefferiella brevicar* (Kieffer, 1911): Ada-Kaleh (Albu & Cure, op. cit.).

○ *Nanocladius bicolor* (Zetterstedt, 1838): Ada-Kaleh (Albu & Cure, op. cit.) under *Microcricotopus*.

○ *Rheocricotopus fuscipes* (Kieffer, 1909) (= *dispar* Gotgh.): Ada-Kaleh (Albu & Cure, op. cit.).

○ *Synorthocladius semivirens* (Kieffer, 1909): Ada-Kaleh (Albu & Cure, op. cit.).

○ *Cladotanytarsus mancus* Walker, 1856: Ada-Kaleh (Albu & Cure, op. cit.).

#### RHAGIONIDAE

*Chrysopilus asilifrons* (Preyssler, 1791) (= *aureus* Meigen, 1804): 1 ♀, Albina islet, 22.VI., GPS 006.

○ *Rhagio tringarius* (Linnaeus, 1758): Bistreț (Iacob, 1974).

#### TABANIDAE

○ *Chrysops flavipes* Meigen, 1804: Bistreț (Pârvu & Chimișliu, 1982).

○ *C. viduatus* (Fabricius, 1794): Bistreț, Negoii (Pârvu, 1993).

○ *Atylotus flavoguttatus* (Szilády, 1915): Bistreț (Pârvu, 1993).

*Hybomitra distinguenda* (Verrall, 1909): Penciu forest, 22.VI., km 480, GPS 003, 2 ♀♀, Elena islet, 22.VI., GPS 006.

○ *Tabanus autumnalis* Linnaeus, 1761: Ciupercenii Noi (Pârvu, 1993).

*T. bovinus* Linnaeus, 1758: 1 ♀, Șaica, 23.VI., GPS 022, leg. M. Stan.

- *T. bromius* Linnaeus, 1758: Ciupercenii Noi (Pârvu, 1993), 2 ♀♀, Pietroșani, 16.VI., km 524, leg. M. Stan, 1 ♀, Elena islet, 22.VI., GPS 006.
- *T. leleani* Austen, 1920: Negoii (Pârvu, 1993).
- *T. spectabilis* Loew, 1858: Negoii (Pârvu, 1993).
- *Haematopota bigoti* Gobert, 1881: Desa (Pârvu & Chimișliu, 1982), Bistreț, Negoii, Ciupercenii Noi (Pârvu, 1993).
- *H. italica* Meigen, 1804: Bistreț (Pârvu, 1993).
- *H. pluvialis* (Linnaeus, 1758): Desa (Pârvu, 1993), 1 ♀, Șaica, 23.VI., km 465, leg. M. Stan.
- *H. subcylindrica* Pandellé, 1883: Desa (Pârvu, 1993).

## XYLOMYIDAE

*Solva marginata* (Meigen, 1820): 1 ♂, Cama islet, 29.IV., 1 ♂, 1 ♀, Cama islet, 7.VI., GPS 005.

## STRATIOMYIDAE

*Chloromyia formosa* (Scopoli, 1763): 4 ♂♂, 1 ♀, Gâtanul islet, 16.V., km 725, GPS 022, 2 ♂♂, 2 ♀♀, Gâtanul islet, 16.V., km 726, 4 ♂♂, 1 ♀, Pietrișul islet, 16.V., km 760, GPS 010, 1 ♂, 1 ♀, Cama islet, 7.VI., GPS 43°45'49" N, 25°50'4" E, leg. M. Stănescu.

- *C. speciosa* (Macquart, 1834): Dăbuleni (Weinberg & Chimișliu, 1982).
- Sargus flavipes* Meigen, 1822: 1 ♀, Mocanul islet, 21.VI., GPS 001, 1 ♀, Lung I islet, 22.VI., 1 ♀, Albina islet, 23.VI., GPS 001.

*S. iridatus* (Scopoli, 1763): 1 ♀, Mocanul islet, 21.VI., GPS 001, 1 ♀, Albina islet, 23.VI., GPS 001.

*Odontomyia ornata* (Linnaeus, 1758): 1 ♂, Pietroșani, 28.IV., GPS 001.

- *Odontomyia viridula* (Fabricius, 1775): Dăbuleni (Rozkony & Weinberg, 1979).

*Stratiomys longicornis* (Scopoli, 1763): 20 ♀♀, Pietroșani, 28.IV., GPS 001.

*Eupachygaster tarsalis* (Zetterstedt, 1842): 1 ♀, Penciu forest, 22.VI., km 480, GPS 003.

## NEMESTRINIDAE

- *Nemestrinus cucasicus* (Fischer, 1806): Negoii (Weinberg & Chimișliu, 1982).

## BOMBYLIIDAE

*Hemipenthes morio* (Linnaeus, 1758): 1 ♀, Cama islet, 7.VI., GPS 005, 1 ♂, 1 ♀, Lung I islet, 22.VI., 1 ♂, 1 ♀, Albina islet, 23.VI., GPS 001.

*Bombylosoma minimum* (Scopoli, 1772): 1 ♀, Cetățuia, 26.IV., GPS 007, 2 ♀♀, Malu, Vedea (dam), km 502, 510, 1 ♀, Pietrișul islet, 16.V., km 760, GPS 010.

*Bombylius discolor* Mikan, 1796: 1 ♂, Pietroșani, 28.IV., GPS 001.

## THEREVIDAE

- *Acrosathe annulata* (Fabricius, 1805): Bistreț, Desa (Weinberg, 1985).

- *Clorismia ardea* (Fabricius, 1794): Desa (Weinberg, 1985), 1 ♂, Slobozia (fish farm), 10.VI., 1 ♀, Penciu forest, 22.VI., km 480, GPS 003.

- Dialineura anilis* (Linnaeus, 1758): 3 ♂♂, 2 ♀♀, Pietroșani, 28.IV., GPS 001.  
 ○ *Thereva apicalis* Wiedemann, 1821: Desa, Negoii (Weinberg, 1985).  
 ○ *T. cincta* Meigen, 1820 (= *arcuata* Loew): Ada-Kaleh, Bistreț, Negoii (Weinberg, 1985).  
 ○ *T. fulva* Meigen, 1804: Ostrovul Mare islet (Weinberg, 1985).

## ASILIDAE

*Choerades fimbriata* (Meigen, 1820): 1 ♂, Gura Argeșului, 23.VI., GPS 012 B.

*C. fulva* (Meigen, 1804): 2 ♀♀, Mocanul islet, 21.VI.

*Dioctria linearis* (Fabricius, 1787): 1 ♀, Gâtanul islet, 16.V., km 725, GPS 022, 1 ♀, Cama islet, 7.VI., GPS 005, 2 ♀♀, Elena islet, 22.VI., GPS 006, 1 ♂, 2 ♀♀, Albina islet, 23.VI., GPS 001, 1 ♀, Penciu forest, 22.VI., km 480, GPS 003, 1 ♂, Gura Argeșului, 23.VI., GPS 012 B.

○ *Molobratia egregia* (Loew, 1869): 2 ♂♂, Penciu forest, 22.VI., km 480.

○ *M. teutonus* (Linnaeus, 1767): Ada-Kaleh (Weinberg, 1975).

○ *Stichopogon inaequalis* Loew, 1847: Ada-Kaleh (Weinberg, 1975).

○ *S. scaliger* Loew, 1847: Desa (Weinberg & Chimișliu, 1982).

○ *Dasyopogon diadema octonotatus* Loew, 1869: Negoii (Weinberg & Chimișliu, 1982).

*Leptogaster cylindrica* (De Geer, 1776): 1 ♀, Penciu forest, 22.VI., km 480, GPS 003.

*L. pubicornis* Loew, 1847: 1 ♂, Penciu forest, 22.VI., km 480.

○ *Epitriptus cingulatus* (Fabricius, 1781): Desa (Weinberg & Chimișliu, 1982).

○ *E. setulosus* (Zeller, 1840): Ada-Kaleh (Weinberg, 1975).

○ *Eutolmas rufibarbis* (Meigen, 1820): Ada-Kaleh (Weinberg, 1975).

○ *Philonicus albiceps* (Meigen, 1820): Negoii (Weinberg & Chimișliu, 1982), 1 ♂, Penciu forest, 22.VI., km 480, Lung I islet, 22.VI., GPS 009.

## EMPIDIDAE

*Hilara lugubris* (Zetterstedt, 1819): 2 ♂♂, Vedeia, 27.IV.

*H. lurida* (Fallén, 1816): 1 ♂, Gura Argeșului, 23.VI., GPS 012 A.

*H. monedula* Collin, 1927: 2 ♂♂, Vana islet, 16.V., km 737, GPS 017, 2 ♂♂, Cama islet, 7.VI., GPS 005.

*H. nigrocincta* de Meijere, 1935: 3 ♂♂, Cetățuia, 26.IV., GPS 008, 11 ♂♂, 4 ♀♀, Mocanul islet, 21.VI., GPS 001, 5 ♂♂, Elena islet, 22.VI., GPS 006, 1 ♂, Penciu forest, 22.VI., 20 ♂♂, 14 ♀♀, Albina islet, 23.VI., GPS 001.

*Empis* (*s. str.*) *genualis* Strobl 1893: 1 ♂, 1 ♀, Pietrișul islet, 16.V., km 760, GPS 010.

*Empis* (*s. str.*) *nigripes* Fabricius, 1794: 2 ♂♂, Pietroșani, 28.IV., GPS 001.

*Empis* (*s. str.*) *pusio* Egger, 1860: 1 ♂, 1 ♀, Gâtanul islet, 16.V., km 726, 3 ♂♂, 2 ♀♀, Slobozia (fish farm), 10.VI., 4 ♂♂, Slobozia (afforested bank), 10.VI., 2 ♂♂, Penciu forest, 22.VI., km 480, GPS 003.

*Empis* (*Euempis*) *tessellata* Fabricius, 1794: 1 ♂, Pietroșani, 28.IV., GPS 001.

*Empis* (*Kritempis*) *livida* Linnaeus, 1758: 2 ♀♀, Slobozia (afforested bank), 10.VI., 1 ♀, Cama islet, 7.VI., GPS 005, 1 ♂, Penciu forest, 22.VI. GPS 002, 3 ♀♀, Elena islet, 22.VI., GPS 006, 3 ♂♂, Lung I islet, 22.VI., GPS 009, 2 ♂♂, 3 ♀♀, Gura Argeșului, 23.VI., GPS 012 A.

*Empis (Polyblepharis) strigata* Loew, 1867: 3 ♂♂, Malu, Vedea km 502, 508, 510 (dam), 29.IV., 1 ♂, 1 ♀, Cetățuia, 26.IV., GPS 007, 18 ♂♂, 22 ♀♀, Pietroșani, 28.IV., GPS 001, 6 ♂♂, Cama islet, 29.IV.

#### HYBOTIDAE

*Bicellaria mera* Collin, 1961: 1 ♂, Pietrișul islet, 16.V., km 760, GPS 010, 4 ♂♂, Gura Jiului, 17.V., km 692, GPS 021, 10 ♂♂, 10 ♀♀, Cama islet, 7.VI., GPS 005, 1 ♂, Penciu forest, 22.VI., km 480, GPS 003.

*Leptozeza flavipes* (Meigen, 1820): 5 ♂♂, Vana islet, 16.V., km 737, GPS 017.

*Oropezella sphenoptera* (Loew, 1813): 2 ♂♂, 1 ♀, Nebuna islet, 16.V., km 751, GPS 016, 3 ♂♂, 3 ♀♀, Acalia islet, 16.V., km 766.

- *Crossopalpus humilis* (Frey, 1913): 3 ♂♂, 1 ♀, Penciu forest, 22.VI., GPS 002. Distribution: Europe: N, S, SF, GB, DK, D, DDR, PL, CS, A, H, ? F, BG; USSR: NET, CET (Rs), WS; Asia: Mongolia.

*Crossopalpus setiger* (Loew, 1859): 3 ♂♂, 1 ♀, Penciu forest, 22.VI., GPS 002.

- *Drapetis simulans* Collin, 1961: 1 ♂, Cetățuia, 26.IV., GPS 007. Distribution: Europe: N, S, SF, GB, B, DK, D, DDR, CS, A; USSR: NET, CET (Est, Rs).

*Drapetis (Elaphropeza) ehippiata* (Fallén, 1815): 1 ♂, Albina islet, 23.VI., GPS 001.

#### DOLICHOPODIDAE

- *Asyndetus latifrons* (Loew, 1857): Desa, Dăbuleni (Pârvu, 1984 a, 1987).

- *A. varus* Loew, 1869: Bistreț (Pârvu, 1996).

- *Cryptophleps kerteszi* Lichtwardt, 1898: Dăbuleni (Pârvu, 1989).

*Chrysotus femoratus* Zetterstedt, 1843: 1 ♀, Slobozia (afforested bank), 10.VI.

- *C. laesus* (Wiedemann, 1817): Drobeta-Turnu Severin (Pârvu, 1995), 10 ♀♀, Mocanul islet, 21.VI., GPS 001, 1 ♂, 2 ♀♀, Penciu forest, 22.VI., km 480, GPS 003, 10 ♀♀, Gura Argeșului, 23.VI., GPS 012 A, 1 ♀, Gura Jiului, 17.V., km 692, GPS 021.

*C. suavis* Loew, 1857: 2 ♂♂, Cama islet, 29.IV., 2 ♂♂, Penciu forest, 22.VI., km 480, GPS 003, 1 ♀, Lung I islet, 22.VI., GPS 009, 3 ♂♂, Gura Argeșului, 23.VI., GPS 012 A.

*Melanostolus nigricilius* (Loew, 1871): Cama islet, 29.IV.

*Dolichopus claviger* Stannius, 1831: 2 ♂♂, Gătanul islet, 16.V., km 725, GPS 022, 1 ♂, Gura Jiului, 17.VI., km 692, GPS 021, 1 ♀, Slobozia (afforested bank), 10.VI., 1 ♂, Mocanul islet, 21.VI., GPS 001 (+ 1 ♂ on sandy beach), 2 ♂♂, 2 ♀♀, Penciu forest, 22.VI., km 480, GPS 002.

- *D. consobrinus* Zetterstedt, 1859: Dăbuleni (Pârvu, 1991).

- *D. griseipennis* Stannius, 1831: 1 ♀, Penciu forest, 22.VI., km 480, GPS 002.

- *D. latilimbatus* Macquart, 1827: 1 ♂, Vana islet, 16.V., km 737, GPS 017, 1 ♂, Gura Jiului, 17.V., km 692, GPS 021.

- *D. nitidus* Fallén, 1823: Dăbuleni (Pârvu, 1987).

- *D. nubilus* Meigen, 1824: Desa (Pârvu, 1984 b).

- *D. sabinus* Haliday, 1838: Desa (Pârvu, 1991).

*D. signifer* Haliday, 1838: 1 ♂, Pietroșani, 28.IV., GPS 001, 1 ♂, Vana islet, 16.V., km 737, GPS 017, 2 ♂♂, 4 ♀♀, Gura Jiului, 17.V., km 692, GPS 021, 1 ♂, Penciu forest, 22.VI., km 480, GPS 003.

*Hercostomus fulvicaudis* Walker, 1851: 1 ♀, Penciu forest, 22.VI., km 480, GPS 002, 1 ♂, Lung II islet, 22.VI., km 480, GPS 010, 1 ♂, 3 ♀♀, Gura Argeşului, 23.VI., GPS 012 A.

*H. nigriplantis* (Stannius, 1831): 1 ♂, Mocanul islet, 21.VI., GPS 001, 1 ♂, 1 ♀, Penciu forest, 22.VI., km 480, GPS 002.

*Poecilobothrus regalis* (Meigen, 1824): 33 ♂♂, 18 ♀♀, Gura Argeşului, 23.VI., GPS 012 A.

○ *Sybistroma obscurellum* (Fallén, 1823): Drobeta-Turnu Severin (Pârvu, 1987).

○ *Hydrophorus praecox* (Lehmann, 1822): Bistreţ (Pârvu, 1984 a).

*H. viridis* (Meigen, 1824): 1 ♂, Lung II islet, 22.VI., GPS 010.

○ *Schoenophilus versutus* (Haliday, 1851): Bistreţ (Pârvu, 1984 a).

• *Medetera longicauda* Becker, 1917: 1 ♂, Pietrişul islet, 16.V., km 760, GPS 010 (Fig. 4). Distribution: Europe: YU; USSR: CET (Rs, Voronezh region).

○ *Neurigona cilipes* Oldenberg, 1904: Bistreţ (Pârvu, 2001).

○ *N. dobrogica* Pârvu, 1996: Bistreţ (Pârvu, 1996, 2003).

○ *N. erichsoni* (Zetterstedt, 1843): Bistreţ (Pârvu, 1984 a).

○ *N. lineata* (Oldenberg, 1904): Bistreţ (Pârvu 1987).

*Chrysotimus molliculus* (Fallén, 1823): 1 ♂, Albina islet, 23.VI., GPS 001.

*Rhaphium antennatum* (Carlier, 1835): 1 ♂, Gura Argeşului, 23.VI., GPS 012 A.

*R. fascipes* (Meigen, 1824): 1 ♂, Elena islet, 22.VI., GPS 006.

*R. zetterstedti* (Parent, 1925): 1 ♂, Mocanul islet, 21.VI., GPS 001, 4 ♂♂, 2 ♀♀, Penciu forest, 22.VI., km 480, GPS 002.

○ *Sciapus albifrons* (Meigen, 1830): Bistreţ (Pârvu 1984 a), Dăbuleni (Pârvu, 1987), 3 ♂♂, 4 ♀♀, Pietrişul islet, 16.V., km 760, GPS 010, 1 ♂, Gura Jiului, 17.V., km 692, GPS 021.

○ *S. constrictans* (Wiedemann, 1817): Desa (Pârvu & Chimişliu, 1982), Bistreţ (Pârvu, 1984 a), 1 ♀, Pietrişul islet, 16.V., km 760, GPS 010, 1 ♀, Acalia islet, 16.V., km 766, GPS 003. Identified after the Meuffels & Grootaert's keys and drawings (1990).

○ *S. flavicinctus* (Loew, 1857): Bistreţ and Desa (Pârvu, 1984 a), 1 ♀, Pietrişul islet, 16.V., km 760, GPS 010, 1 ♂, Gătanul islet, 16.V., km 726, 1 ♂, Gura Jiului, 17.V., km 692, GPS 021, 1 ♂, Slobozia (fish farm), 10.VI., GPS 010.

○ *S. longulus* (Fallén, 1829): Bistreţ (Pârvu, 1984 a).

○ *S. maritimus* (Becker, 19): Dăbuleni (Pârvu 1987).

○ *Campsicnemus filipes* Loew, 1859: Dăbuleni (Pârvu, 1987), 1 ♂, Mocanul islet, 21.VI., GPS 001.

○ *Syntormon pallipes* (Fabricius, 1794): Dăbuleni (Pârvu, 1987): 1 ♂, Pietroşani islet, 28.IV., GPS 001, 1 ♂, Cama islet, 29.IV., 1 ♂, Gura Jiului, km 692, GPS 021, 1 ♀, Gura Argeşului, 23.VI., GPS 012 A.

○ *S. pumilum* (Meigen, 1824): Bistreţ (Pârvu 1984 a).

○ *S. rufipes* (Meigen, 1824): Desa (Pârvu & Chimişliu, 1982), 2 ♀♀, Vedea, 27.IV., GPS 016.

*S. silvanum* Pârvu, 1989: 1 ♀, Cama islet, 29.IV., 1 ♀, Penciu forest, 22.VI., km 480, GPS 002.

○ *Telmaturgus tumidulus* (Raddatz, 1873): Drobeta-Turnu Severin (Pârvu, 1986).

*Teuchophorus spinigerellus* (Zetterstedt, 1843): 1 ♂, Penciu forest, 22.VI., km 80, GPS 002.

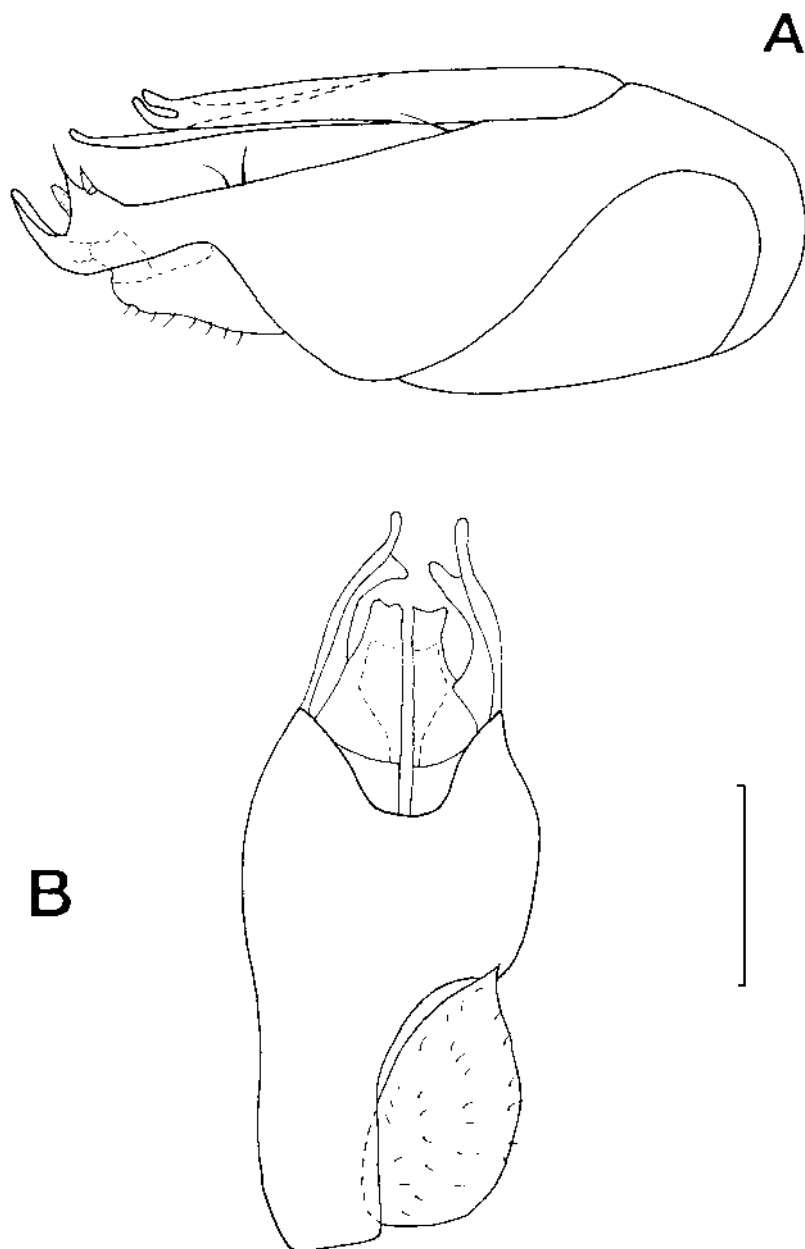


Fig. 4 – *Medetera longicauda* Becker, ♂. A, genital capsule in lateral view; B, the same in dorsal view. Scale: 0.2 mm.

*Xanthochlorus tenellus* (Wiedemann, 1817): 2 ♀♀, Slobozia (afforested bank), 10.VI., GPS 010, 4 ♂♂, 14 ♀♀, Mocanul islet, 22.VI., GPS 001, 9 ♂♂, 8 ♀♀, Mocanul islet, 22.VI., (in sandy beach), 1 ♀, Elena islet, 22.VI., GPS 006, 1 ♀, Lung I islet, 22.VI., GPS 009, 6 ♂♂, 10 ♀♀, Albina islet, 23.VI., GPS 001.

## MICROPHORIDAE

*Microphor crassipes* Macquart, 1827: 1 ♀, Albina islet, 23.VI., GPS 001.  
*M. holosericeus* (Meigen, 1804): 1 ♀, Cetățuia, 26.IV., GPS 007.

## PHORIDAE

• *Chaetopleurophora pygidialis* Schmitz, 1938: 1 ♂, Dinu islet, 29.V.-3.VI. (Figs 5 A, 6 A) (Barber traps), km 507, leg. E. Schneider. Distribution: Europe: D, NL, PL; USSR: CET; Nearctic Region.

*Diplonevra nitidula* (Meigen, 1830): 1 ♂, Penciu forest, 22.VI., km 480, GPS 003.

*Gymnophora arcuata* (Meigen, 1830): 3 ♀♀, Dinu islet, 29.V.-3.VI. (Barber traps), km 507, leg. E. Schneider, 2 ♂♂, Albina islet, 23.VI., GPS 001.

*G. nigripennis* Schmitz, 1926: 2 ♀♀, Albina islet, 23.VI., GPS 001.

• *G. quartomollis* Schmitz, 1920: 1 ♀, Albina islet, 23.VI., GPS 001 (Figs 5 B, 6 B). Distribution: Europe: A, D, DK, GB, H, N, NL.

◦ *Phora atra* (Meigen, 1804): 2 ♂♂, Malu, 27.IV., GPS 015, Ada-Kaleh (Dușa, 1975).

• *P. hamata* Schmitz, 1927: 1 ♂, Malu, 27.IV. (Fig. 7). Distribution: A, D, GB, H, PL; USSR: CET.

## LONCHOPTERIDAE

◦ *Lonchoptera bifurcata* (Fallén, 1810): 2 ♀♀, Pietrișul islet, 16.V., km 760, GPS 010, 1 ♀, Cama islet, 7.VI., GPS 004, 8 ♀♀, Mocanul islet, 21.VI., GPS 001, 3 ♀♀, Penciu forest, 22.VI., km 480, GPS 002; Ada-Kaleh (Dușa, 1975).

*L. lutea* Panzer, 1809: 1 ♀, Cama islet, 7.VI., GPS 004, 1 ♂, Penciu forest, 22.VI., km 480, GPS 002, 1 ♂, 3 ♀♀, Lung I islet, 22.VI., 1 ♀, Albina islet, 23.VI., GPS 001, 2 ♂♂, Gura Argeșului, 23.VI., GPS 012 A.

*L. strobli* De Meijere 1906: 2 ♀♀, Vedea, 27.IV., km 510, GPS 016.

◦ *L. tristis* Meigen, 1824: Ada-Kaleh (Dușa, 1975).

## SYRPHIDAE

*Episyrphus balteatus* (De Geer, 1776): 1 ♀, Pietrișul islet, 16.V., km 760, 20 ♂♂, 2 ♀♀, Slobozia (afforested bank), 10.VI., 6 ♂♂, 2 ♀♀, Penciu forest, km 480, GPS 002 (bank + flooded forest), 2 ♂♂, 2 ♀♀, Penciu forest, 22.VI., km 480, GPS 003 (poplar plantation), 1 ♂, 1 ♀, Elena islet, 22.VI., GPS 006, 1 ♂, Albina islet, 23.VI., GPS 001, 2 ♂♂, 1 ♀, Gura Argeșului, 23.VI., GPS 012 A.

*Eupeodes (Metasyrphus) corollae* Fabricius, 1794: 1 ♂, 1 ♀, Copănița islet, 17.V., km 696, GPS 019, 1 ♀, Cama islet, 7.VI., GPS 005.

*E. (= M.) luniger* (Meigen, 1822): 1 ♂, Copănița islet, 17.V., km 696, GPS 019.

*Scaeva pyrastris* (Linnaeus, 1758): 1 ♂, Copănița islet, 17.V., km 696, GPS 019.

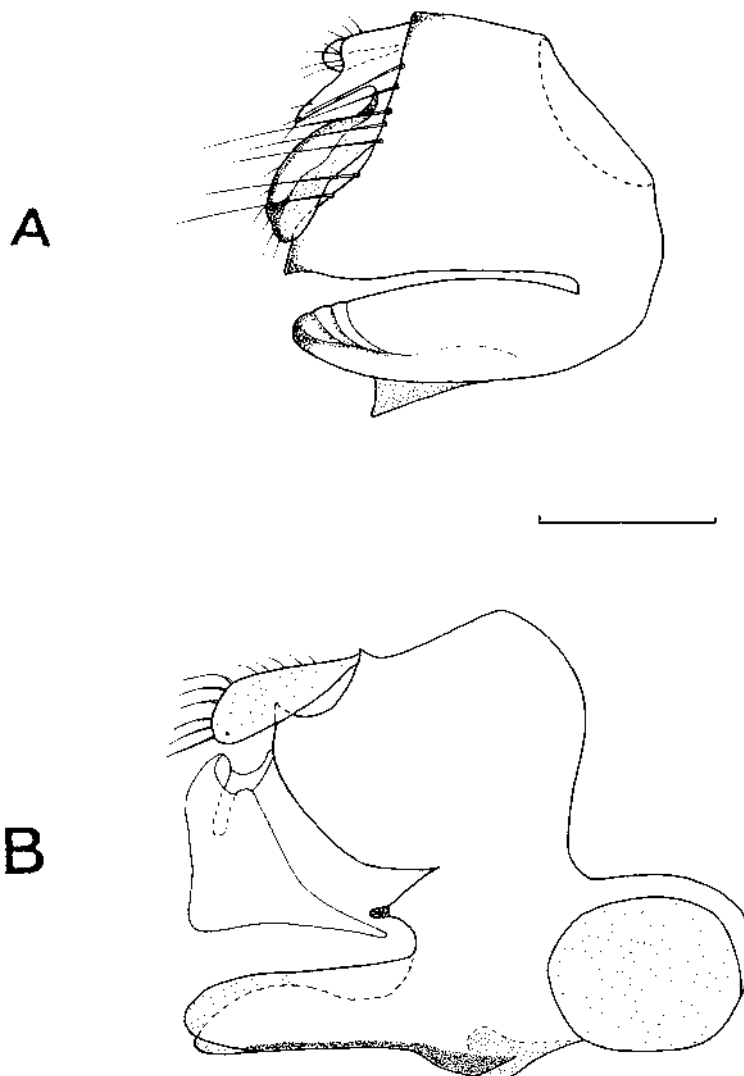


Fig. 5 – A, *Chaetopleurophora pygidialis* Schmitz, ♂ - genital capsule, lateral view; B, *Gymnophora quartomollis* Schmitz, ♂ - genitale capsule, lateral view. Scale: 0.2 mm.

*Sphaerophoria scripta* (Linnaeus, 1758): 1 ♂, 2 ♀♀, Cetățuia, 26.IV., 4 ♂♂, 12 ♀♀, Pietrișul islet, 28.IV., GPS 001, 1 ♂, 2 ♀♀, Cama islet, 29.IV., 2 ♂♂, 2 ♀♀, Gâtanul islet, 16.V., km 725, GPS 022, 2 ♀♀ - km 726, 1 ♀, Copănița islet, 17.V., km 696, GPS 019, 4 ♂♂, 4 ♀♀, Cama islet, 7.VI., GPS 005, 1 ♀, Mocanul islet, 21.VI., GPS 001, 10 ♂♂, 15 ♀♀, Penciu forest, 22.VI., km 480, GPS 003.

*Syrphus ribesii* (Linnaeus, 1758): 1 ♀, Cama islet, 7.VI., GPS 005, 1 ♀, Gura Argeșului, 23.VI., GPS 012 B.

*Syrphus vitripennis* Meigen, 1822: 1 ♂, 1 ♀, Gura Argeșului, 23.VI., GPS 012 B.

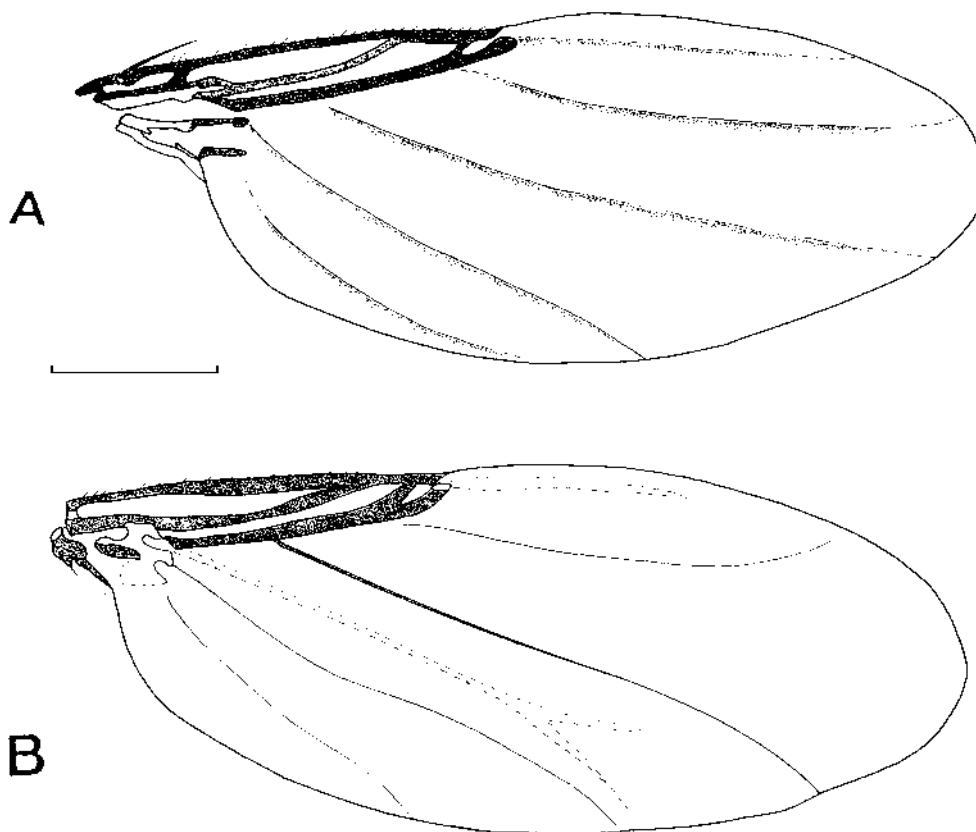


Fig. 6 – A, *Chaetopleurophora pygidialis* Schmitz, ♂ - wing; B, *Gymnophora quartomollis* Schmitz, ♂ - wing. Scale: 0.5 mm.

*Chrysotoxum arcuatum* (Linnaeus, 1758): 1 ♀, Cetățuia, 26.IV., GPS 007, 4 ♀♀, Pietroșani, 28.IV., GPS 001, 3 ♀♀, Malu, Vedea (dam), 29.IV., km 502, 508, 510.

*C. cautum* (Harris, 1776): 6 ♂♂, 5 ♀♀, Pietroșani, 28.IV., GPS 001.

*C. elegans* Loew, 1841: 1 ♀, Pietrișul islet, 16.V., km 760, GPS 010.

*C. festivum* (Linnaeus, 1758): 1 ♀, Pietrișul islet, 16.V., km 760, GPS 010.

*C. octomaculatum* Curtis, 1837: 1 ♂, Vedea, 27.IV., 6 ♂♂, Malu, Vedea, 29.IV., km 502, 508, 510, 1 ♀, Copănița islet, 17.V., km 696, GPS 017.

*Melanostoma mellinum* (Linnaeus, 1758): 1 ♂, 1 ♀, Vedea, 27.IV., GPS 016, 1 ♂, 17 ♀♀, Pietroșani, 28.IV., GPS 001, 1 ♂, 1 ♀, Pietrișul islet, 16.V., km 760, GPS 010, 3 ♀♀, Copănița islet, 17.V., km 696, GPS 019, 2 ♂♂, 6 ♀♀, Mocanul islet, 21.VI., GPS 001, 3 ♂♂, 3 ♀♀, Penciu forest, 22.VI., km 480, GPS 003, 1 ♂, Elena islet, 22.VI., GPS 006, 2 ♀♀, Gura Argeșului, 23.VI., GPS 012 B.

*M. scalare* (Fabricius, 1794): 1 ♀, Malu, 27.IV., GPS 014, 1 ♂, 1 ♀, Cama islet, 7.VI., GPS 005, 1 ♂, 1 ♀, Lung I islet, 22.VI.

*Rhingia campestris* Meigen, 1822: 1 ♀, Albina islet, 23.VI., GPS 001.

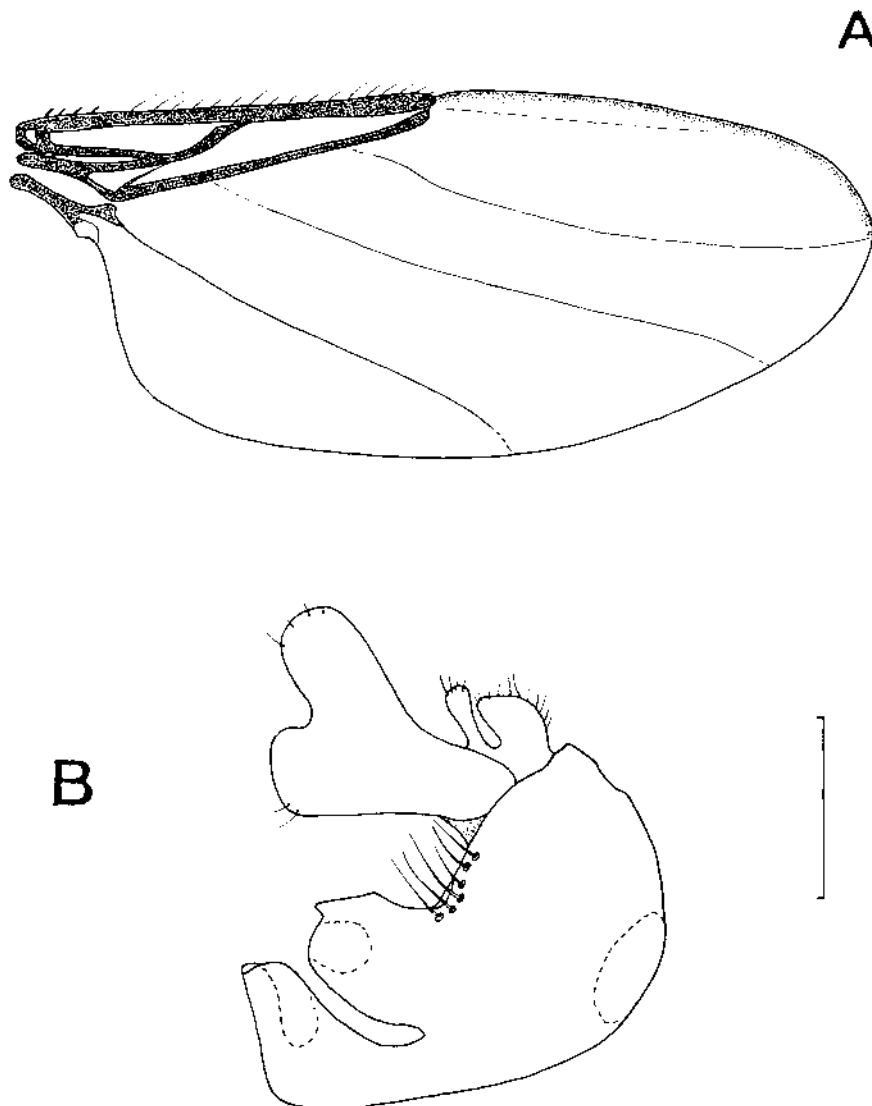


Fig. 7 – *Phora hamata* Schmitz, ♂. A, wing; B, genital capsule in lateral view. Scales: A= 0.5 mm, B = 0.2 mm.

*Volucella bombylans* (Linnaeus, 1758): 1 ♂, Pietrișul islet, 16.V., km 760, GPS 010.

*Neoscasia interrupta* (Meigen, 1822): 1 ♀, Cama islet, 7.VI., GPS 005, 1 ♀, Penciu forest, 22.VI., km 480, GPS 002.

*Eristalinus* (*s. str.*) *sepulchralis* (Linnaeus, 1758): 2 ♂♂, 1 ♀, Cama islet, 7.VI., GPS 005.

*E. (Eoseristalis) arbustorum* (Linnaeus, 1758): 2 ♂♂, 5 ♀♀, Cama islet, 7.VI., GPS 005.

*E. (Eo.) interruptus* (Poda, 1761): 2 ♀♀, Pietroșani, 28.IV., GPS 001.

- E. (Eo.) jugorum* Egger, 1858: 1 ♀, Pietroșani, 28.IV., GPS 001.  
*E. (Eo.) pertinax* (Scopoli, 1763): 4 ♀♀, Pietroșani, 28.IV., GPS 001, 1 ♀, Cama islet, 29.IV.  
*E. (s. str.) tenax* (Linnaeus, 1758): 1 ♂, Elena islet, 22.VI., GPS 006, 1 ♂, Albina islet, 23.VI., GPS 001.  
*Helophilus hybridum* Loew, 1846: 1 ♂, Cama islet, 29.IV., 1 ♂, Copănița islet, 17.V., km 696, GPS 017.  
*H. pendulum* (Linnaeus, 1758): 1 ♂, Pietrișul islet, 16.V., km 760, GPS 010.  
*H. trivittatum* (Fabricius, 1805): 3 ♂♂, 1 ♀, Pietroșani, 28.IV., GPS 001, 1 ♂, 2 ♀♀, Malu, Vedea, 29.IV., km 502, 508, 510, 1 ♂, 1 ♀, Dinu islet, 29.V-3.VI (Barber traps), leg. Dr. Eckbert Schneider, 9 ♂♂, 25 ♀♀, Cama islet, 7.VI., GPS 005, 1 ♂, Slobozia (Cheson), 10.VI.  
*Myathropa florea* (Linnaeus, 1758): 2 ♂♂, Pietroșani, 28.IV.  
*Parhelophilus frutetorum* (Fabricius, 1775): 1 ♂, 1 ♂, Pietroșani, 28.IV., GPS 001.  
*Syritta pipiens* (Linnaeus, 1758): 4 ♂♂, Pietroșani, 28.IV., GPS 001, 1 ♀, Slobozia (Cheson), 10.VI., 9 ♂♂, Penciu forest, 22.VI., km 480, GPS 003 (poplar plantation), 2 ♂♂, 2 ♀♀, Gura Argeșului, 23.VI., GPS 012-B.

## MICROPEZIDAE

- *Cnodacophora stylifera* (Loew, 1870): 2 ♂♂, Cama islet, 29.IV. (Fig. 8). Distribution: GB, S; USSR: ES; Asia: Mongolia.

## PIOPHILIDAE

- Allopiophila luteata* (Haliday, 1833): 2 ♂♂, 3 ♀♀, Malu, 27.IV., GPS 014.

## OTITIDAE

- Ceroxys hortulana* (Rossi, 1790): 6 ♂♂, 2 ♀♀, Cetățuia, 26.IV., GPS 007, 1 ♂, 2 ♀♀, Cama islet, 29.IV., 2 ♂♂, Pietrișul islet, 16.V., km 760, GPS 010.  
*C. munda* (Loew, 1868): 1 ♀, Gura Argeșului, 23.VI., GPS 012 A (Fig. 9 B).  
*C. urticae* (Linnaeus, 1758): 1 ♂, Pietrișul islet, 16.V., km 760, GPS 010.  
  - *Myennis octopunctata* (Coquebert, 1798): 2 ♂♂, Cama islet, 7.VI., GPS 005, 1 ♀, Albina islet, 23.VI., GPS 001 (Fig. 9 A). Distribution: Europe, expect North Europe; USSR: CET, SET, SMA (Tj), FE.*Seioptera vibrans* (Linnaeus, 1758): 1 ♀, Pietrișul islet, 16.V., km 760, GPS 010.

## TEPHRITIDAE

- Urophora congrua* Low, 1862: 1 ♀, Slobozia (afforested bank), 10.VI.  
  - *U. macrura* (Loew, 1855): 1 ♀, Cetățuia, 26.IV., GPS 007. Distribution: Southern Europe, USSR: CET, SET, TC; Asia: Turkey, Israel; North Africa: Egypt.*Euaresta bullans* (Wiedmann, 1830): 4 ♂♂, 1 ♀, Slobozia (fish farm), 10.VI.  
*Trupanea stellata* (Fuessly, 1775): 1 ♂, Slobozia (fish farm), 10.VI.  
  - *Myoleja caesio* (Harris, 1776): 1 ♀, Albina islet, 23.VI., GPS 001; Bistret (Gheorghiu, 1984).

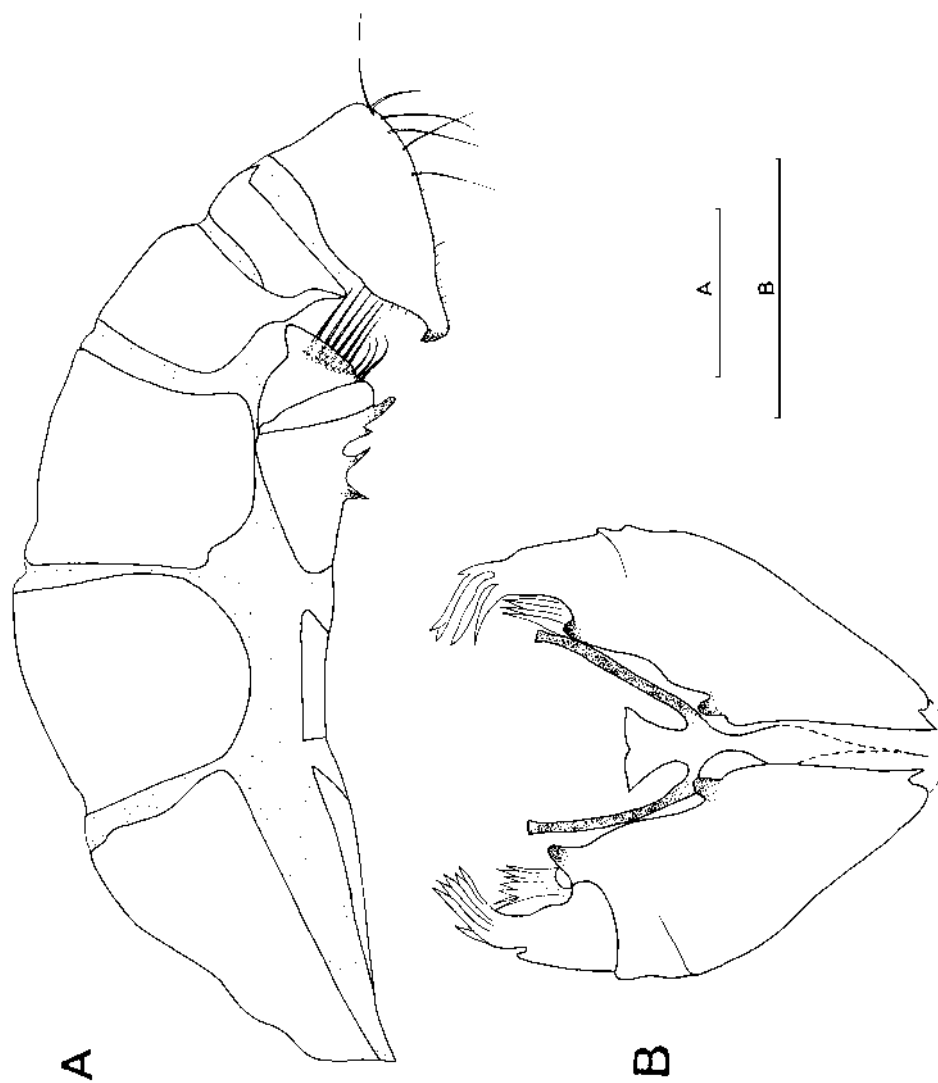


Fig. 8 – *Crodacophora stylifera* (Loew) ♂. A, abdomen in lateral view; B, sternite III, external view. Scales: A = 0.2 mm, B = 0.5 mm.

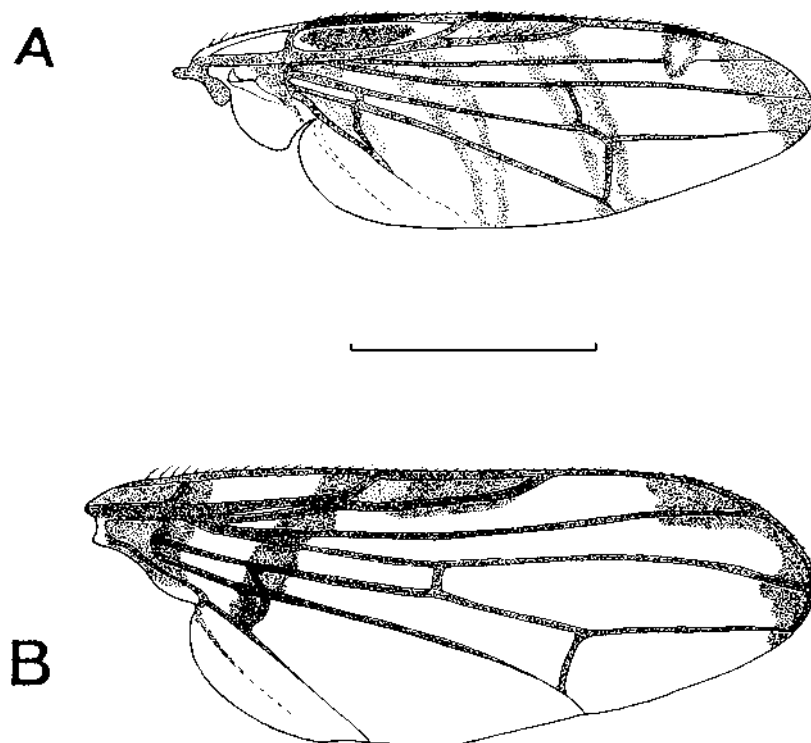


Fig. 9 – A, *Myennis octopunctata* (Cocq.) ♂ - wing; B, *Ceroxys munda* (Loew), ♀ - wing. Scale: 2 mm.

#### LAUXANIIDAE

• *Homoneura modesta* (Loew, 1857): 1 ♀, Lung I islet, 22.VI., GPS 009, 1 ♀, Albina islet, 23.VI., GPS 001. Distribution: Europe: D, DDR, PL; USSR: NET, CET (Est, La, Li).

○ *Calliopum aeneum* (Fallén, 1820): 6 ♂♂, 3 ♀♀, Cetățuia, 26.IV., GPS 007, 1 ♂, 1 ♀, Vedeia, 27.IV., km 510, GPS 016, 15 ♂♂, 14 ♀♀, Malu, 27.IV., GPS 014, 40 ♂♂, 18 ♀♀, Pietroșani, 28.IV., GPS 001, 1 ♂, Cama islet, 29.IV., 1 ♂, Gâtanul islet, 16.V., km 725, GPS 022, 1 ♂, Nebuna islet, 16.V., km 751, GPS 016, 2 ♀♀, Pietrișul islet, 16.V., km 760, GPS 010, 1 ♂, Copănița islet, 17.V., km 696, GPS 017, 1 ♂, Slobozia (fish farm), 10.VI., 1 ♀, Mocanul islet, 21.VI., GPS 001, 1 ♀, Penciu forest, 22.VI., km 480, GPS 003, 1 ♀, Elena islet, 22.VI., GPS 006, 1 ♀, Albina islet, 23.VI., GPS 001; Drobeta-Turnu Severin, Dăbuleni (Ursu, 1991).

○ *C. simillimum* (Collin, 1933): Drobeta-Turnu Severin, Dăbuleni (Ursu, 1991).

*Eusapromyza multipunctata* (Fallén, 1820): 3 ♂♂, Nebuna islet, 16.V., km 751, GPS 016, 1 ♂, Acalia islet, 16.V., km 766, GPS 003, 1 ♀, Mocanul islet, 21.VI., GPS 001 (plus 2 ♂♂, 5 ♀♀ on the sandy beach), 1 ♀, Penciu forest, 22.VI., km 480, GPS 003, 1 ♂, 2 ♀♀, Albina islet, 23.VI., GPS 001.

*Lyciella affinis* (Zetterstedt, 1847): 4 ♂♂, Pietroșani, 28.IV., GPS 001, 2 ♀♀, Dinu islet, 29.V.-3.VI. (Barber traps), km 507, leg. E. Schneider, 20 ♀♀, Cama islet, 29.V.-3.VI., km 510 (Barber traps), leg. E. Schneider, 1 ♀, Vedeia

(Furnica), 29.V.-3.VI. (Barber traps), leg. E. Schneider, 1 ♂, 1 ♀, Mocanul islet, 21.VI., GPS 001 (sandy beach), 1 ♀, Gura Argeşului, 23.VI., GPS 012 A.

*L. rorida* (Fallén, 1820): 2 ♂♂, 2 ♀♀, Slobozia (fish farm), 10.VI.

*Minettia (Frendelia) fasciata* (Fallén, 1826): 10 ♂♂, 3 ♀♀, Cama islet, 7.VI., GPS 005, 9 ♂♂, 1 ♀, Slobozia (afforested bank), 10.VI., 8 ♂♂, Slobozia (fish farm), 10.VI., 1 ♂, Slobozia islet, 21.VI., leg. M. Stan, 2 ♂♂, Mocanul islet, 21.VI., GPS 001 A, 11 ♂♂, 4 ♀♀, Penciu forest, 22.VI., km 480 (bank + flooded forest), 7 ♂♂, 4 ♀♀, Penciu forest, 22.VI., (poplar plantation), 1 ♂, Lung I islet, 22.VI., 1 ♂, Lung II islet, 22.VI., 1 ♀, Albina islet, 23.VI., GPS 001, 2 ♀♀, Gura Argeşului, 23.VI., GPS 012 A.

○ *M. (F.) longipennis* (Fabricius, 1794): 2 ♂♂, Malu, 27.IV., GPS 014, 1 ♂, Pietrişul islet, 16.V., GPS 010, 1 ♂, Mocanul islet, 21.VI., GPS 001; Drobeta-Turnu Severin (Ursu, 1991).

○ *M. (s. str.) plumicornis* (Fallén, 1820): 1 ♂, 1 ♀, Slobozia (fish farm), 10.VI., 1 ♂, 2 ♀♀, Mocanul islet, 21.VI., GPS 001 A, 3 ♂♂, 4 ♀♀, Penciu forest, 22.VI (flooded forest), 2 ♂♂, 1 ♀, Lung I islet, 22.VI., 2 ♂♂, Gura Argeşului, 23.VI., GPS 012 A; Dăbuleni (Ursu, 1991).

○ *Minettia rivos*a (Meigen, 1826): Dăbuleni (Ursu, 1991).

○ *Sapromyza (Sapromyzosoma) quadricincta* Becker, 1895 (= *bipunctata* Meigen, 1830-preocc.): 1 ♂, Mocanul islet, 21.VI., GPS 001; Dăbuleni (Ursu, 1991).

○ *Sapromyza (s. str.) apicalis* Loew, 1847: Dăbuleni (Ursu, 1991).

*S. (s. str.) quadripunctata* (Linnaeus, 1767): 1 ♂, Slobozia (afforested bank), 10.VI., 2 ♂♂, Slobozia (fish farm), 10.VI.

○ *Tricholauxania praeusta* (Fallén, 1820): Dăbuleni (Ursu, 1991).

#### SCIOMYZIDAE

○ *Pherbina intermedia* Verbeke, 1948: Ada-Kaleh (Weinberg, 1975).

○ *Sepedon spinipes* (Scopoli, 1763): Desa (Weinberg & Chimişliu, 1982).

*Trypetoptera punctulata* (Scopoli, 1763): 1 ♀, Elena islet, 22.VI., GPS 006.

#### CHAMAEMYIIDAE

○ *Parochthiphila coronata* (Loew, 1858): Ada-Kaleh (Teodorescu, 1975).

○ *P. tryapitzini* Tanasijtshuk, 1968: Ada-Kaleh (Teodorescu, 1975) under *P. inconstans* (Becker, 1902).

○ *Chamaemyia elegans* (Panzer, 1809): Ada-Kaleh (Teodorescu, 1975).

○ *C. geniculata* (Zetterstedt, 1838): Ada-Kaleh (Teodorescu, 1975).

○ *C. juncorum* (Fallén, 1823): Ada-Kaleh (Teodorescu, 1975).

○ *C. polystigma* (Meigen, 1830): Ada-Kaleh (Teodorescu, 1975).

○ *Leucopis annulipes* Zetterstedt, 1848: Ada-Kaleh (Teodorescu, 1975) under *L. caucasica* Tanas. 1961.

○ *L. melanopus* Tanasijtshuk, 1959: Ada-Kaleh (Teodorescu, 1975).

○ *L. ninae* Tanasijtshuk, 1966: Ada-Kaleh (Teodorescu, 1975).

#### SEPSIDAE

*Nemopoda nitidula* (Fallén, 1820): 1 ♀, Mocanul islet, 21.VI.

*N. pectinulata* Loew, 1873: 2 ♂♂, Mocanul islet, 21.VI.

*Sepsis cynipsea* (Linnaeus, 1758): 1 ♂, Gâtanul islet, 16.V., km 725, GPS 022, 3 ♂♂, 1 ♀, Gura Argeşului, 23.VI., GPS 012 A.

*S. flavimana* Meigen, 1826: 2 ♂♂, 2 ♀♀, Slobozia (afforested bank), 10.VI., 2 ♂♂, Slobozia (fish farm), 10.VI.

*S. fulgens* Hoffmannsegg in Meigen, 1826: 1 ♂, 3 ♀♀, Malu, 27.IV., GPS 014, 8 ♂♂, 12 ♀♀, Vedea, 27.IV., km 510, GPS 016, 2 ♂♂, 2 ♀♀, Slobozia (fish farm), 10.VI., 1 ♂, Gâtanul islet, 16.V., km 725, GPS 022, 1 ♂, Mocanul islet, 21.VI., GPS 001, 2 ♂♂, 2 ♀♀, Penciu forest, 22.VI., km 480, 1 ♂, Gura Argeşului, 22.VI., GPS 012 A.

*S. punctum* (Fabricius, 1794): 1 ♂, Malu, 27.IV., GPS 014, 3 ♂♂, 1 ♀, Vedea, 27.IV., km 510, GPS 016, 1 ♂, Gâtanul islet, 21.V., km 725, GPS 022, 2 ♂♂, 2 ♀♀, Mocanul islet, 21.V., GPS 001 A, 1 ♂, Penciu forest. 22.VI., km 480, 1 ♂, Gura Argeşului, 23.VI., GPS 012 A.

*S. thoracica* Robineau-Desvoidy, 1830: 1 ♂, Slobozia (afforested bank), 10.VI.

*S. violacea* Meigen, 1826: 2 ♀♀, Cetăţuia, 26.IV., GPS 008, 1 ♂, 1 ♀, Vedea, 27.IV., km 510, 1 ♂, 1 ♀, Gâtanul islet, 16.V., km 725, 1 ♀, Copăniţa islet, 17.V., km 696, Cama islet, 7.VI., GPS 005, 1 ♂, Slobozia (fish farm), 10.VI., 3 ♂♂, 3 ♀♀, Mocanul islet, 21.VI., GPS 001, 001 A (sandy beach), 1 ♂, Penciu forest, 22.VI., km 480 (bank + flooded forest), 1 ♂, Elena islet, 22.VI., GPS 006, 1 ♀, Albina islet, 23.VI., GPS 001, 2 ♂♂, Gura Argeşului, 23.VI., GPS 012 A.

R • *Themira paludosa* Elberg, 1963: 3 ♂♂, 3 ♀♀, Gura Argeşului, 22.VI., GPS 012 A (Fig. 10 B). Distribution: Estonia.

*T. putris* (Linnaeus, 1758): 1 ♂, 3 ♀♀, Gura Argeşului, 23.VI., GPS 012 A.

#### AGROMYZIDAE

- *Agromyza abiens* Zetterstedt, 1848: Ada-Kaleh (Drăghia, 1975).
- *A. flaviceps* Fallén, 1823: Ada-Kaleh (Drăghia, 1975).
- *A. nana* Meigen, 1830: Ada-Kaleh (Drăghia, 1975).
- *A. potentillae* (= *spiraeae* Kalt.) Kaltenbach, 1864: Ada-Kaleh (Drăghia, 1975).
- *Amauromyza* (*s. str.*) *lamii* (Kaltenbach, 1858): Ada-Kaleh (Drăghia, 1975).
- *A. (Cephalomyza) verbasci* (Bouché, 1847): Ada-Kaleh (Drăghia, 1975).
- *Paraphytomyza tridentata* (Loew, 1858): Ada-Kaleh (Drăghia, 1975).
- *Galiomyza morio* (Brischke, 1881): Ada-Kaleh (Drăghia, 1975).
- *Liriomyza strigata* (Meigen, 1830): Ada-Kaleh (Drăghia, 1975).
- *Phy albiceps* Meigen, 1830: Ada-Kaleh (Drăghia, 1975).
- *P. plantaginis* Goureaux, 1851: Ada-Kaleh (Drăghia, 1975).
- *P. ranunculi* (Schrank, 1803): Ada-Kaleh (Drăghia, 1975).
- *P. vitalbae* Kaltenbach, 1872: Ada-Kaleh (Drăghia, 1975).

#### OPOMYZIDAE

*Opomyza florum* (Fabricius, 1794): 3 ♂♂, 1 ♀, Mocanul islet, 21.VI., GPS 001.

#### MILICHIIDAE

- *Desmometopa m-nigrum* (Zetterstedt, 1848): Dăbuleni (Ursu, 1989 c).
- *D. sordida* (Fallén, 1820): Dăbuleni (Ursu, 1989 c).

- *Leptometopa rufifrons* Becker, 1903: Dăbuleni (Ursu, 1989 c).
- *Madiza glabra* Fallén, 1820: Dăbuleni (Ursu, 1989 c).
- *Neophyllomyza niveipennis* (Strobl, 1900): Dăbuleni (Ursu, 1989 c).

#### CHLOROPIDAE

- *Dicraeus tibialis* (Macquart, 1835): Ada-Kaleh (Péterfi, 1975).
- *Elachiptera cornuta* (Fallén, 1820: Porțile de Fier zone (Péterfi, 1975), 1 ♀, Mocanul islet, 21.VI., GPS 001.
- *Elachiptera pubescens* Thalhammer, 1898: Porțile de Fier zone (Péterfi, 1975).
- *Incertella albipalpis* (Meigen, 1830): Ada-Kaleh (Péterfi, 1975).
- *Rhopalopteron femoralis* (Collin, 1946): Ada-Kaleh (Péterfi, 1975).
- *Oscinella frit* (Linnaeus, 1758): Porțile de Fier zone (Péterfi, 1975).
- *O. hortensis* Collin, 1946: Porțile de Fier zone (Péterfi, 1975).
- *O. nitidissima* (Meigen, 1838): Porțile de Fier zone (Péterfi, 1975).
- *O. pusilla* (Meigen, 1830): Porțile de Fier zone (Péterfi, 1975).
- *Polyodaspis ruficornis* (Macquart, 1835): Ada-Kaleh (Péterfi, 1975).
- *Trachysiphonella scutellata* (von Roser, 1840): Porțile de Fier zone (Péterfi, 1975).
- *Tricimba cincta* Meigen, 1830: Ada-Kaleh (Péterfi, 1975).
- Camarota curvipennis* (Latreille, 1805): 1 ♂, Mocanul islet, 21.VI., GPS 001, 4 ♂♂, 2 ♀♀, Penciu forest, 22.VI., km 480, GPS 003, 1 ♀, Gura Argeșului, 23.VI., GPS 012 B.
- *Chlorops (s. str.) finitimus* Becker, 1910: Ada-Kaleh (Péterfi, 1975).
- *C. novakii* Strobl, 1902: Ada-Kaleh (Péterfi, 1975).
- *Meromyza nigriventris* Macquart, 1835: 2 ♂♂, 4 ♀♀, Cetățuia, 26.IV., GPS 007 (Fig. 10 A, B), Porțile de Fier zone (Péterfi, 1975).
- *M. saltatrix* (Linnaeus, 1761): Iron Gates area (Péterfi, 1975).
- *Thaumatomyia natata* (Meigen, 1830): Ada-Kaleh (Péterfi, 1975).

#### HELEOMYZIDAE

- Suillia affinis* (Meigen, 1830): 1 ♀, Malu, 27.IV., GPS 014, 1 ♂, 1 ♀, Slobozia (afforested bank), 10.VI., 2 ♀♀, Vedea (Furnica), 29.V.-3.VI. (Barber traps), leg. E. Schneider, 18 ♂♂, 15 ♀♀, Dinu islet, 29.V.-3.VI., km 507, (Barber traps), leg. E. Schneider, 1 ♂, Cama islet, km 510, 29.V.-3.VI. (Barber traps), leg. E. Schneider.
- Suillia gigantea* (Meigen, 1830): 1 ♀, Vedea (Furnica), 29.V.-3.VI. (Barber traps), leg. E. Schneider, 1 ♀, Dinu islet, km 507, 29.V.-3.VI. (Barber traps), leg. E. Schneider.

#### TRIXOSCELIDIDAE

- *Trixoscelis canescens* (Loew, 1865): 1 ♀, Vedea, 27.IV., GPS 016. Distribution: Europe: B, D, DDR, H, JU.
- T. frontalis* (Fallén, 1823): 1 ♂, 1 ♀, Slobozia (afforested bank), 10.VI.

#### SPHAEROCERIDAE

- Copromyza (Fungobia) fimetaria* (Meigen, 1830): 2 ♂♂, Cetățuia, 26.IV., GPS 007, 4 ♂♂, 1 ♀, Vedea, 27.IV., km 510, GPS 016, 4 ♂♂, Pietroșani, 28.IV., km 519, GPS 002.

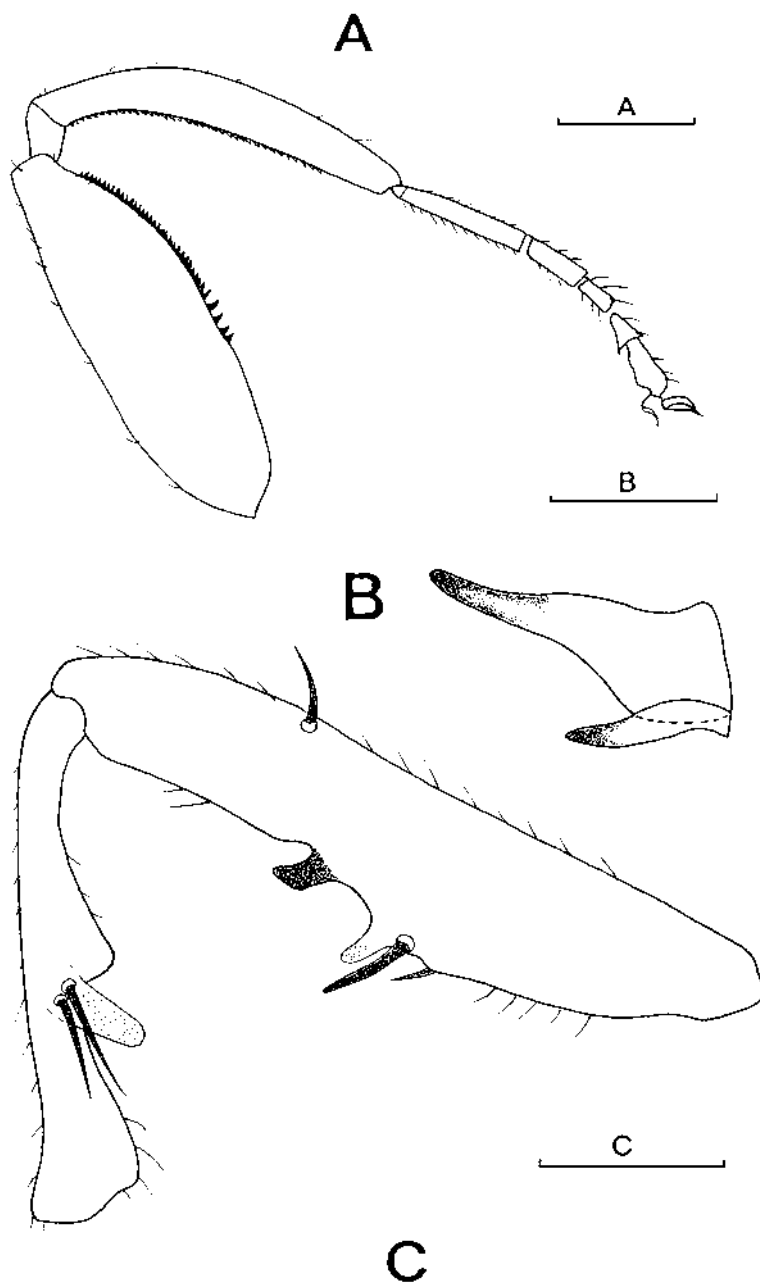


Fig. 10 – A, B, *Meromyza nigriventris* Macq. ♂. A, leg III; B, gonite; C, *Themira paludosa* Elberg ♂ - leg I. Scales: A = 0.3 mm, B = 0.1 mm, C = 0.2 mm.

*Leptocera lutosa* (Stenhamar, 1855): 10 ♂♂, 1 ♀, Gura Argeşului, 23.VI., GPS 012 A.

#### DROSOPHILIDAE

*Amiota (Phortica) variegata* (Fallén, 1823): 2 ♂♂, Nebuna islet, 16.V., km 751, 1 ♂, Acalia islet, 16.V., km 766, 3 ♂♂, Lung I islet, 22.VI., GPS 009, 1 ♀, Albina islet, 23.VI., GPS 001.

*Drosophila (s. str.) phalerata* Meigen, 1830: 2 ♂♂, 1 ♀, Mocanul islet, 21.VI., GPS 001 A, 2 ♂♂, 1 ♀, Lung I islet, 22.VI., GPS 009, 1 ♀, Albina islet, 23.VI., GPS 001.

*D. (s. str.) transversa* Fallén, 1823 : 1 ♀, Elena islet, 22.VI., GPS 006, 1 ♂, 1 ♀, Lung I islet, 22.VI., GPS 009, 1 ♀, Albina islet, 23.VI., GPS 001.

*D. (Sophophora) elanogaster* Meigen, 1830: 1 ♂, Malu, 27.IV., GPS 014.

*Lordiphosa andalusiaca* (Strobl, 1906): 1 ♂, Albina islet, 23.VI., GPS 001.

○ *Scaptomyza flava* (Fallén, 1823): Ada-Kaleh (Drăghia, 1975).

*Scaptomyza (Parascaptomyza) pallida* (Zetterstedt, 1847): 11 ♂♂, 11 ♀♀, Copănița islet, 17.V., km 696, GPS 019, 4 ♂♂, 4 ♀♀, Mocanul islet, 21.VI., GPS 001, 1 ♂, 2 ♀♀, Elena islet, 22.VI., GPS 006, 5 ♂♂, 2 ♀♀, Lung I islet, 22.VI., GPS 009.

#### EPHYDRIDAE

*Discomyza incurva* (Fallén, 1813): 2 ♂♂, Penciu forest, 22.VI., km 480, GPS 003.

*Psilopa bornholmi* Becker, 1926: 1 ♂, Pietrişul islet, 16.V., GPS 010.

*P. compta* (Meigen, 1830): 1 ♀, Mocanul islet, 21.VI., GPS 001.

*P. marginella* Fallén, 1823: 1 ♂, Cetăţuia, 26.IV., km 516, GPS 007.

*Trimerina madizans* (Fallén, 1813): 1 ♀, Penciu forest, 22.VI., km 480, GPS 003.

○ *Ptilomya orsovana* Enderlein, 1922: Dăbuleni (Ursu, 1989 a), 1 ♂, Mocanul islet, 21.V., GPS 001 (sandy beach).

*Hydrellia griseola* (Fallén, 1813): 8 ♂♂, 8 ♀♀, Malu, 27.IV., km 502, GPS 014, 3 ♂♂, 3 ♀♀, Vedeia, 27.IV., km 510, GPS 016, 5 ♂♂, 5 ♀♀, Copănița islet, 17.V., km 696, GPS 019, 1 ♂, 5 ♀♀, Mocanul islet, 21.VI., GPS 001.

*H. maculiventris* Becker, 1896: 1 ♂, 2 ♀♀, Penciu forest, 22.VI., km 480, GPS 003.

*H. modesta* Loew, 1860: 8 ♂♂, 1 ♀, Cetăţuia, 27.IV., km 516, GPS 007, 7 ♂♂, m 7 ♀♀, Cama islet, 29.IV., 1 ♂, Gătanul islet, 21.VI., km 725, GPS 022, Pietrişul islet, 16.V., km 760, GPS 010.

*H. ranunculi* Haliday, 1839: 1 ♂, Penciu forest, 22.VI., km 480, GPS 003.

*Dichaeta caudata* (Fallén, 1823): 2 ♂♂, Cama islet, 7.VI., GPS 005, 1 ♀, Mocanul islet, 21.VI., GPS 001.

*Notiphila (s. str.) stagnicola* (Robineau-Desvoidy, 1830): 1 ♀, Penciu forest, 22.VI., km 480, GPS 003.

*Athyroglossa glabra* (Meigen, 1830): 2 ♂♂, 1 ♀, Dinu islet, 29.V.-3.VI., (Barber traps), km 507, leg. E. Schneider, 1 ♂, Lung I islet, 22.VI., GPS 009.

*Mosillus subsultans* (Fabricius, 1794): 1 ♂, Malu, 27.IV., km 516, GPS 007, 1 ♀, Penciu forest, 22.VI., km 480, GPS 003.

○ *Hyadina scutellata* (Haliday, 1839): Dăbuleni (Ursu, 1989 a).

*Ochthera mantis* (De Geer, 1776): 1 ♂, Lung I islet, 22.VI., GPS 009, 1 ♂, Gura Argeşului, 23.VI., GPS 012 A.

*Diclasioipa lacteipennis* (Loew, 1862): 1 ♂, 2 ♀♀, Lung I islet, 22.VI., GPS 009.

*Philygria stictica* (Meigen, 1830): 2 ♂♂, Pietrişul islet, 16.V., km 760, GPS 010.

*Parydra aquila* (Fallén, 1813): 3 ♂♂, 1 ♀, Gura Argeşului, 23.VI., GPS 012 A.

*Scatella stagnalis* (Fallén, 1813): 1 ♀, Penciu forest, 22.VI., km 480, GPS 003.

*S. tenuicosta* Collin, 1930: 1 ♀, Penciu forest, 22.VI., km 480, GPS 003.

*Scatophila caviceps* (Stenhammer, 1844): 1 ♂, Cama islet, 7.VI., GPS 004.

#### SCATOPHAGIDAE

*Scatophaga lutaria* (Fabricius, 1794): 1 ♂, Malu, 27.IV., km 507, GPS 007.

*S. stercoraria* (Linnaeus, 1758): 4 ♂♂, Vedea, 27.IV., km 510, GPS 016, 1 ♂, Pietroşani, 28.IV., km 519, GPS 002, 1 ♂, Nebuna islet, 16.V., km 751, GPS 016, 5 ♂♂, Gâtanul islet, 16.V., km 725, GPS 022, 5 ♂♂, 5 ♀♀, Gâtanul islet, 16.V., km 726, 1 ♂, Pietrişul islet, 16.V., km 760, GPS 010.

#### ANTHOMYIIDAE

*Anthomyia pluvialis* (Linnaeus, 1758): 1 ♀, Malu, 27.IV., GPS 007, 1 ♂, Gura Jiului, 17.V., km 692, GPS 021.

*A. procellaris* Rondani, 1866: 3 ♂♂, Gura Argeşului, 23.VI., GPS 012 A.

*Botanophila fugas* (Meigen, 1826): 1 ♂, Cama islet, 29.V.-3.VI., (Barber traps), leg. E. Schneider, 1 ♂, Mocanul islet, 21.VI., GPS 001, 1 ♂, Albina islet, 23.VI., GPS 001.

• *Delia bisetosa* (Stein, 1907) (= *elymi* Ringdahl, 1916): 1 ♂, Malu, 27.IV., km 507, GPS 007, 4 ♂♂, Copăniţa islet, 17.V., km 696, GPS 019 (Fig. 11 B). Distribution: Europe: D, DDR, DK, PL, S; Asia: China.

*Emmesomyia grisea* (Robineau-Desvoidy, 1830): 1 ♂, Albina islet, 23.VI., GPS 001.

◦ *Pegomyia hyosciami* (Panzer [1809]): Ada-Kaleh (Drăghia, 1975).

#### MUSCIDAE

*Muscina pascuorum* (Meigen, 1826): 1 ♀, Vedea, 27.IV., km 510, GPS 016.

*Musca domestica* Linnaeus, 1758: 1 ♂, Pietroşani, 28. IV.

*Phaonia valida* (Harris, 1780): 1 ♂, Cama islet, 29.VI.-3.VI., (Barber traps), km 510, leg. E. Schneider, 1 ♂, Cama islet, 7.VI., GPS 004, 1 ♂, Slobozia (afforested bank), 10.VI., GPS 001.

◦ *Helina reversio* (Harris [1780]): Dăbuleni (Ursu, 1989 b).

◦ *H. calceatae* formis (Schnabe in Schnabe & Dziedzicki, 1911): Dăbuleni (Ursu, 1989 b).

*Graphomya maculata* (Scopoli, 1763): 1 ♂, Cama islet, 7.VI., GPS 004.

*Lispe consanguinea* Loew, 1858: 2 ♀♀, Shore of Danube km 508, 29.V.-3.VI., (Barber traps), leg. Dr. Eckbert Schneider, 1 ♂, Penciu forest, 22.VI., km 480, GPS 002, 7 ♂♂, 7 ♀♀, Lung I islet, 22.VI., GPS 009, 4 ♂♂, 4 ♀♀, Lung II islet, 22.VI., GPS 010.

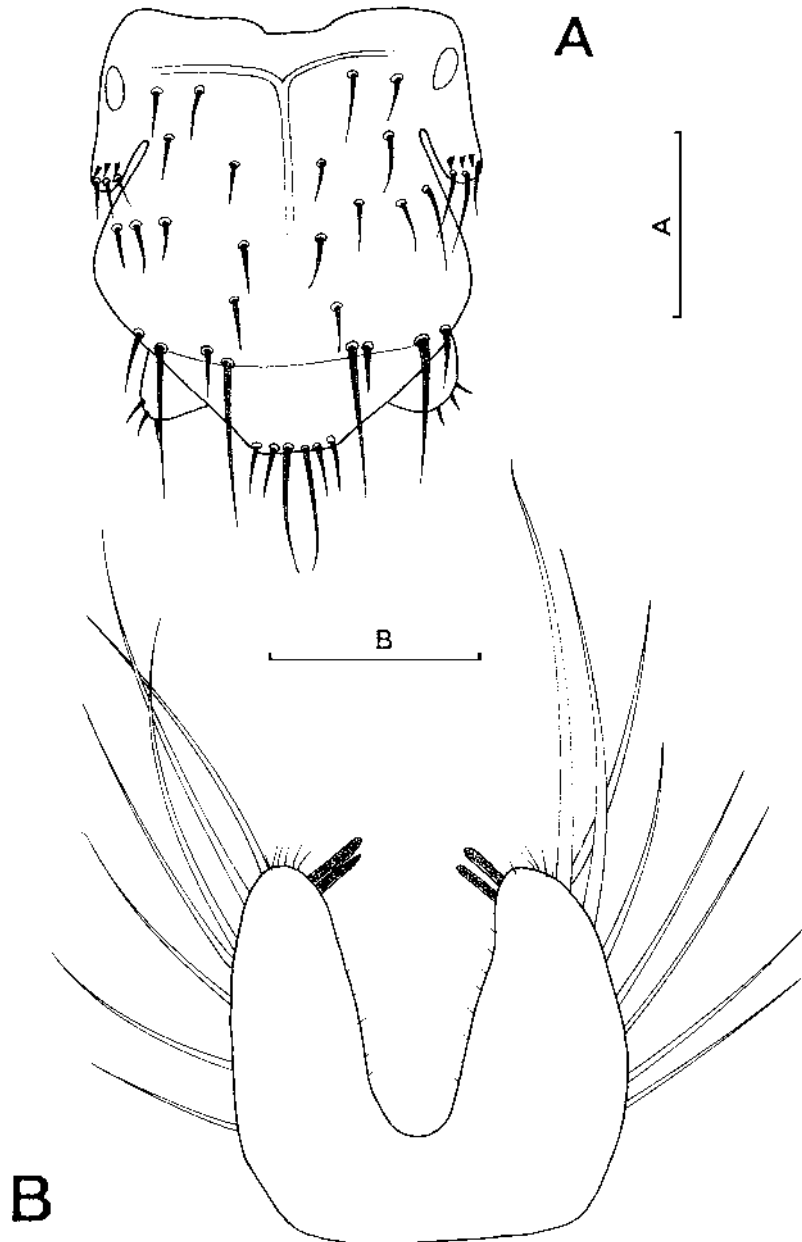


Fig. 11 – A, *Lipoptena fortisetosa* Maa, ♂ - thorax in dorsal view; B, *Delia bisetosa* (Stein) ♂ - sternite V, dorsal view. Scales: A = 0.5 mm, B = 0.2 mm.

- Lispe pygmaea* Fallén, 1825: 3 ♂♂, Penciu forest, 22.VI., km 480, GPS 002.  
 ○ *Coenosia humilis* Meigen, 1826: Dăbuleni (Ursu 1989, b).  
 ○ *C. strigipes* Stein, 1916: Dăbuleni (Ursu 1989 b).

## CALLIPHORIDAE

- Bellardia viarum* (Robineau-Desvoidy, 1830) (= *pusilla* Meigen, 1826):  
 1 ♂, Gura Jiului, 17.V., km 692.  
*Lucilia bufonivora* oniez, 1876: 1 ♂, Malu, 27.IV., GPS 014 (wet lands).  
*L. caesar* (Linnaeus, 1758): 1 ♂, Pietroșani, 28.IV., km 519, GPS 001, 1 ♂,  
 Pietrișul islet, 16.V., km 760, GPS 010, 1 ♂, Slobozia (afforested bank), 10.VI.,  
 GPS 001.  
*L. richardsi* Collin, 1926: 1 ♂, Pietroșani, 28.IV., km 519, GPS 001.  
*L. silvarum* (Meigen, 1826): 1 ♂, Slobozia (fish farm), 10.VI.

## SARCOPHAGIDAE

- Helicophagella crassimargo* (Pandellé, 1896): 1 ♂, Malu, 27.IV., km 507,  
 GPS 014.  
*H. (Parabellieria) melanura* (Meigen, 1826): 1 ♂, Lung I islet, 22.VI.  
*Heteronychia (s. str.) bulgarica* (Enderlein, 1936): 1 ♂, Cărbulea islet,  
 17.V., km 688, GPS 028.  
*H. (s. str.) dissimilis* (Meigen, 1826): 1 ♂, Copănița islet, 17.V., km 696,  
 GPS 019, 1 ♂, Penciu forest, 22.VI., km 480, GPS 002, 1 ♂, Elena islet, 22.VI.,  
 GPS 006.  
*Pierretia (s. str.) spinosa* (Villeneuve, 1911): 1 ♂, Malu, 27.IV., km 507,  
 GPS 014, 1 ♂, Gura Argeșului, 23.VI., GPS 012 A.  
*Parasarcophaga (Rosellea) aratrix* (Pandellé, 1896): 1 ♂, Pietrișul islet,  
 16.V., km 760.

## TACHINIDAE

- Campsilura concinna* (Meigen, 1824): 1 ♂, Cetățuia, 27.IV., GPS 007.  
 ○ *Meigenia mutabilis* (Fallén, 1810): Dăbuleni (Mihaly & Weinberg, 1984).  
*Gonia ornata* Meigen, 1826: 1 ♀, Pietroșani, 28.IV., GPS 001.  
*Pseudogonia parisiaca* (Robineau-Desvoidy, 1851): 1 ♂, Malu, 27.IV.  
 ○ *Peletieria rubescens* (Robineau-Desvoidy, 1830) (= *tessellata* Zetterstedt):  
 Oltenița (Mihaly & Weinberg, 1984).  
*P. varia* (Fabricius, 1794) (= *pyrrhogaster* Rondani): 1 ♀, Malu, 27.IV.,  
 GPS 014, 1 ♂, 1 ♀, Pietroșani, 28.IV.  
*Tachina fera* (Linnaeus, 1761): 1 ♀, Vedea, 29.IV., km 510 (dam).  
*Zophomyia temula* (Scopoli, 1763): 1 ♀, Pietrișul islet, 16.V., km 760, 2 ♂♂,  
 Cama islet, 17.V., km 696, GPS , 3 ♂♂, Gura Jiului, 17.V., km 692.  
*Peribaea apicalis* Robineau-Desvoidy, 1863: 1 ♂, Cetățuia, 27.IV., GPS 007.  
*Aphria longirostris* (Meigen, 1824): 1 ♀, Penciu forest, 22.VI., km 480.  
 ○ *Billaea adelpha* Loew, 1873: Drobeta-Turnu Severin (type locality) (Loew,  
 1873).  
*Microphthalma europaea* Egger, 1860: 1 ♀, Slobozia (fish farm), 10.VI.  
*Thelaira solivaga* (Harris, 1780): 1 ♂, Cama islet, 7.VI.  
 ○ *Ectophasia oblonga* (Robineau-Desvoidy, 1830): Ostrovul Mare islet  
 (Mihaly & Weinberg, 1984).

- *Leucostoma simplex* (Fallén, 1815): Ada-Kaleh (Mihaly & Weinberg, 1984).
- *Cylindromyia brassicaria* (Fabricius, 1775): Bistreț (Mihaly & Weinberg, 1984).

*C. (Dupuisia) crassa* (Loew, 1845): 1 ♂, Slobozia (fish farm), 10.VI.

*A. (Conopsioma) rufipes* (Meigen, 1824): 1 ♂, Cama islet, 7.VI., GPS 005.

#### HIPPOBOSCIDAE

- *Lipoptena fortisetosa* Maa, 1965 (= *parvula* Theodor, 1967): 2 ♂♂, Lung I islet, 22.VI., 8 ♂♂, 8 ♀♀, Albina islet, 23.VI., GPS 001 (Fig. 11 A). Distribution: CH, CZ, Rs.

#### ACKNOWLEDGEMENTS

I want to thank to the organizers and the colleagues who contributed to the success of these studies by logistics and by the pleasant time spent working together: Dr. Iulian Nichersu, Dr. Dumitru Murariu, Dr. Victoria Tatole, Dr. Iorgu Peterscu, Drd. Alexandru Iftime, Dr. Melanya Stan, Miss Oana Paula Popa. I also thank to Mrs Petruța Dumitrică for tracing the drawings in China ink.

#### DIPTERE DIN CORIDORUL VERDE AL DUNĂRII (ROMÂNIA)

##### REZUMAT

Se prezintă o listă cu 366 specii de diptere (48 familii) de pe malul românesc al Dunării și de pe 14 ostroave adiacente începând cu fosta insulă Ada-Kaleh până la Oltenița. Datele provin din determinarea materialului colectat de autor și de colegi în perioada aprilie – iunie 2004 între Calafăt și Oltenița (cuprinde 266 de specii din 39 familii) și din literatura (152 specii), fie risipite în 34 de lucrări fie grupate în volumul “Fauna Porților de Fier”. Deoarece cele două liste nu se suprapun decât foarte puțin (21 specii), lista finală (366 specii) prezintă pentru prima dată un profil faunistic al Coridorului Verde al Dunării – sectorul Românesc.

Cele 17 de specii noi neraportate până acum din fauna țării arată atât legături cu fauna mediteraneană cât și cu cea higrofilă din nordul Europei.

##### LITERATURE CITED

- ALBU, P., V. CURE, 1975 – Diptera – Chironomidae. Pp. 270-276. *In*: M. Ionescu (ed.) “Fauna. Grupul de cercetări complexe Porțile de Fier”. Edit. Academiei Republicii Socialiste România. (in Romanian)
- BOZHKOVA, D., 1991 – Kryvosmuche shchite Komari. Balgarskata Akademiya Naukite, Sofiya, 221 pp.
- DRĂGHIA, I., 1975 – Insecte miniere (Diptera). Pp. 258-261. *In*: M. Ionescu (ed.) “Fauna. Grupul de cercetări complexe Porțile de Fier”. Edit. Academiei Republicii Socialiste România. (in Romanian)
- DUȘA, L., 1975 – Diptera – Phoridae, Musidoridae și Dorylidae. Pp. 288-289. *In*: M. Ionescu (ed.) “Fauna. Grupul de cercetări complexe Porțile de Fier”. Edit. Academiei Republicii Socialiste România. (in Romanian)
- DRENSKY, P., 1943 – Die Fliegen der Familie Trypetidae (Dipt.) Bulgarien. Jahrbuch der Universität des Heiligen Climent von Ochrid in Sofia Physikulish – Mathematische Fakultät Bd. 39, 1942/1943, B. 3 Naturwissenschaft, Sofia: 69-126. (in Bulgarian).
- ERHAN, E., 1962 – Date noi cu privire la fauna de Tipuline (Diptera: Tipulidae) din R.P.R. Studii și cercetări de biologie. Seria Biologie Animală, 14: 351-370. (in Romanian)
- GHEORGHIU, V., 1984 – La famille des Tephritidae (Diptera) dans les collection du Muséum d’Histoire Naturelle “Grigore Antipa”. Travaux du Muséum d’Histoire Naturelle “Grigore Antipa”, 26: 209-217.
- HONDRU, N., 1975 – Diptera – Sciaridae. Pp. 262-263. *In*: M. Ionescu (ed.) “Fauna. Grupul de cercetări complexe Porțile de Fier”. Edit. Academiei Republicii Socialiste România. (in Romanian)

- IACOB, M., 1974 – Nouvelles contributions à la connaissance de la famille Rhagionidae (Diptera – Brachycera) de Roumanie. Travaux du Muséum d'Histoire Naturelle "Grigore Antipa", 15: 197–202.
- IACOB, M., 1980 – La situation actuelle de la connaissance de la répartition des représentants de la famille de Bibionidae (Diptera, Nematocera) en Roumanie. Travaux du Muséum d'Histoire Naturelle "Grigore Antipa", 21: 187–198.
- IONESCU, M. (ed.), 1975 – Fauna. Grupul de cercetări complexe «Porțile de Fier». Seria monografică. Edit. Academiei R. S. România, București. 316 pp. (in Romanian)
- LOEW, H., 1873 – Diptera nova, in Pannonia inferiori et confinibus Daciae regionibus a Ferd. Kowarzio capta. Berliner entomologische Zeitschrift, 17: 33–52.
- LUPAȘCU, G., P. DĂNCESCU, 1975 – Diptera – Flebotominae. Pp. 277–279. In: M. Ionescu (ed.). "Fauna. Grupul de cercetări complexe Porțile de Fier". Edit. Academiei Republicii Socialiste România. (in Romanian)
- MANNHEIMS, B., BR. THEOWALD, 1980 – 15 Tipulidae. In: E. Lindner "Die Fliegen der Palaearktischen Region", Stuttgart, 3 (15): 1–538.
- MĂRGĂRIT, G., 1975 – Diptera – Bibionidae. Pp. 269–270. In: "Fauna. Grupul de cercetări complexe Porțile de Fier". Edit. Academiei Republicii Socialiste România. (in Romanian)
- MEUFFELS, J. G., P. GROOTAERT, 1990 – The identity of *Sciapus contristans* (Wiedemann, 1817) (Diptera, Dolichopodidae), and a revision of the species group of its relatives. Bulletin de l'Institut Royal de Sciences Naturelles de Belgique. Entomologie, 60: 161–178.
- MIHÁLYI, F., M. WEINBERG, 1984 – New Tachinidae (Diptera) in the collections of the "Grigore Antipa" Natural History Museum. Travaux du Muséum d'Histoire Naturelle "Grigore Antipa", 25: 435–444.
- NEACȘU, P., 1968 – Nouvelles contributions à la connaissance des Diptères Itonididae. *Parepidopsis mamaevi* n. sp. et *Dasyneura tripolii* n. sp. Travaux du Muséum d'Histoire Naturelle "Grigore Antipa", 8: 899–907.
- NEACȘU, P., 1975 – Diptera – Itonidae. Pp. 263–269. In: M. Ionescu "Fauna. Grupul de cercetări complexe Porțile de Fier". Edit. Academiei Republicii Socialiste România. (in Romanian)
- NICOLESCU, G., 1995 – The mosquitoes (Diptera: Culicidae) from Romania: an annotated checklist and bibliography. Romanian Archives of Microbiology and Immunology. 54 (1-2): 75–104.
- OOSTERBROEK, P., 1978 – The western palaearctic species of *Nephrotoma* Meigen, 1803 (Diptera, Tipulidae) Part I Beaufortia, 337 (26): 1–137.
- PÂRVU, C., 1984 a – Data about family Dolichopodidae (Diptera) in Romania (II). Travaux du Muséum d'Histoire Naturelle "Grigore Antipa", 25: 209–215.
- PÂRVU, C., 1984 b – New data on the distribution of the family Dolichopodidae (Diptera) in Romania (III). Travaux du Muséum d'Histoire Naturelle "Grigore Antipa", 26: 195–208.
- PÂRVU, C., 1986 – Data on some Dolichopodidae (Diptera) of Romania (IV). Travaux du Muséum d'Histoire Naturelle "Grigore Antipa", 28: 101–111.
- PÂRVU, C., 1987 – Contribution concerning the distribution of family Dolichopodidae (Diptera) in Romania (V), with the description of a new species *Hercostomus transsylvanicus* n. sp. Travaux du Muséum d'Histoire Naturelle "Grigore Antipa", 29: 169–184.
- PÂRVU, C., 1989 – New contribution to the knowledge of Dolichopodidae (Diptera) of Romania (VI) with the description of two new species *Syntormon silvianus* n. sp. and *Asyndetus negrobovi* n. sp. Travaux du Muséum d'Histoire Naturelle "Grigore Antipa", 30: 57–65.
- PÂRVU, C., 1991 – New data on the distribution of family Dolichopodidae (Diptera) in Romania (VII) with the description of *Hercostomus dacicus* n. sp. Travaux du Muséum d'Histoire Naturelle "Grigore Antipa", 31: 123–137.
- PÂRVU, C., 1993 – The tabanid species (Diptera, Tabanidae) of Romania, preserved in the scientific collections of "Grigore Antipa" Natural History Museum of Bucharest. Travaux du Muséum d'Histoire Naturelle "Grigore Antipa", 33: 201–214.
- PÂRVU, C., 1995 – Some Dolichopodidae (Diptera) from Romania (X) of the genus *Chrysotus* Meig., with the description of *C. romanicus* n. sp. Travaux du Muséum d'Histoire Naturelle "Grigore Antipa", 35: 407–418.
- PÂRVU, C., 1996 – *Neurigona dobrogica* n. sp. (Diptera: Dolichopodidae) and some other species recorded for the first time in Romania (XI) from its southern half. Travaux du Muséum National d'Histoire Naturelle "Grigore Antipa", 36: 265–277.

- PÂRVU, C., 2001 – Dolichopodidae (Diptera) from Romania (XIX). Additional data from the Maramureş depression, Romania. *Travaux du Muséum National d'Histoire Naturelle "Grigore Antipa"*, 43: 249-262.
- PÂRVU, C., 2003 – Two dipterans little known in Romania: *Neurigona dobrogica* Pârvu, 1996 and *N. suturalis* (Fallén, 1823) (Diptera: Dolichopodidae). *Travaux du Muséum National d'Histoire Naturelle "Grigore Antipa"*, 45: 217-235.
- PÂRVU, C., C. CHIMIŞLIU, 1982 – Date privind răspândirea unor Tabanidae, Dolichopodidae, Chloropidae și Hippoboscidae (Diptera) în Oltenia. "Oltenia" Studii și Comunicări de istorie, etnografie și științele naturii, Craiova: 269–272. (in Romanian)
- PÉTERFI, FR., 1975 – Diptera – Chloropidae și Opomyzidae. Pp. 291–295. *In*: M. Ionescu (ed.) "Fauna. Grupul de cercetări complexe «Porțile de Fier»". Edit. Academiei Republicii Socialiste România. (in Romanian)
- ROZKOSNY, R., M. WEINBERG, 1979 – An account of the Romanian Stratiomyoidea (Diptera). *Scripta Facultatis Scientiarum (Iyep Brunensis Biologica)*, 1 (9): 49–64.
- SOÓS, Á., L. PAPP, 1992 – Introduction to volumes 1-13. *In*: A. Soós, L. Papp, P. Oosterbroeck (eds.) "Catalogue of Palearctic Diptera", 1: 7-21. Budapest.
- SHTAKEL'BERG, A. A., E. P. NARCHUK (eds.), 1969 – 30. Otryad Diptera – Dvukrylye. *In*: Bei-Bienko "Opredeliteli nasekomykh evropeiskoi chasti SSSR", 5. Dvukrylye, blokhi, pervaya chasti, Leningrad, 806 pp. (in Russian)
- SHTAKEL'BERG, A. A., E. P. NARCHUK (eds.), 1970 – 30. Otryad Diptera – Dvukrylye. *In*: Bei-Bienko "Opredeliteli nasekomykh evropeiskoy chasti SSSR", 5. Dvukrylye, blokhi, vtoraya chasti, Leningrad, 943 pp. (in Russian)
- TEODORESCU, I., 1975 – Diptera – Chamaemyiidae. Pp. 289–291. *In*: M. Ionescu "Fauna. Grupul de cercetări complexe Porțile de Fier". Edit. Academiei Republicii Socialiste România. (in Romanian)
- URSU, A., 1989 a – Noi semnalări de efidride (Diptera: Ephydriidae) în fauna României. Studii și cercetări de biologie. *Seria Biologie animală*, 41 (1): 3–5. (in Romanian)
- URSU, A., 1989 b – Contribution à la connaissance des Muscides (Diptera, Muscidae) de la faune de Roumanie II. *Travaux du Muséum d'Histoire Naturelle "Grigore Antipa"*, 30: 93-96.
- URSU, A., 1989 c – Contribution à la connaissance des Milichiidae (Diptera, Milichiidae) de la faune de Roumanie. *Travaux du Muséum d'Histoire Naturelle "Grigore Antipa"*, 30: 97-99.
- URSU, A., 1991 – Contribution à la connaissance de la famille de Lauxaniidae (Diptera) de Roumanie. *Travaux du Muséum d'Histoire Naturelle "Grigore Antipa"*, 31: 285-293.
- WEINBERG, M., 1975 – Diptera – Stratiomyidae, Tabanidae, Nemestrinidae, Cyrtidae, Asilidae, Leptogastridae, Therevidae, Conopidae și Sciomyzidae. Pp. 279–284. *In*: M. Ionescu (ed.) "Fauna. Grupul de cercetări complexe Porțile de Fier". Edit. Academiei Republicii Socialiste România. (in Romanian)
- WEINBERG, M., 1985 – New data on the presence and distribution of the Therevidae (Diptera) in Romania. *Travaux du Muséum National d'Histoire Naturelle "Grigore Antipa"*, 37: 129-149.
- WEINBERG, M., C. CHIMIŞLIU, 1982 – Ordinul Diptera în colecțiile Muzeului din Craiova. Oltenia. Studii și comunicări. *Muzeul Olteniei Craiova*, 18: 273–278. (in Romanian)

Received: February 25, 2005  
Accepted: April 4, 2005

Muzeul Național de Istorie Naturală "Grigore Antipa"  
Șos. Kiseleff nr.1, 011341 București 2, România  
e-mail: cparvu@antipa.ro