

Travaux du Muséum National d'Histoire Naturelle «Grigore Antipa»	Vol. XLIX	pp. 169–172	© Octobre 2006
---	-----------	-------------	-------------------

***STENUS (HEMISTENUS) STANAE* SPEC. NOV. (COLEOPTERA:  
STAPHYLINIDAE), A NEW ENDEMIC STAPHYLINID SPECIES  
FROM THE MERIDIONAL CARPATHIANS (ROMANIA)\***

VOLKER PUTHZ

Abstract. A new endemic *Stenus* species from the Meridional Carpathians is described, *Stenus (Hemistenus) stanae* spec. nov. and compared to *S. benickiellus* Puthz.

Résumé. Une nouvelle espèce endémique du genre *Stenus* est décrite des Carpathes Méridionales, *Stenus (Hemistenus) stanae* spec. nov. et comparée avec *S. benickiellus* Puthz.

Key words: Staphylinidae, *Stenus (Hemistenus) stanae*, endemic species, Meridional Carpathians, Romania.

***Stenus (Hemistenus) stanae* spec. nov.**  
(Fig. 1 B)

*Material*: Holotype (♂): Romania: “Zernester Gebirge, Siebenbürgen” (Zărnești, Piatra Craiului Mts), leg. E. Deubel / *Stenus stanae* sp. n. det. V. Puthz 2006 (in the Coleoptera Collection of the “Grigore Antipa” National Museum of Natural History – Bucharest the original identification was *Stenus alpicola*, no 83 578).

*Description of the male (holotype)*

*Body*: Black, moderately shiny, moderately finely, very densely punctate; pubescence greyish. Antennae dark brown. Segment one and base of segment two of the maxillary palpi yellowish, remainder of segments brown. Legs dark chestnut brown, knees blackish.

Femora clubbed, mesotibiae with a strong apical tooth, metatibiae with a distinct preapical tooth. Sternite 8 with a narrow apical notch in about posterior 7<sup>th</sup> to 8<sup>th</sup>. Sternite 9 with a sharp apicolateral tooth. Aedeagus (Fig. 1 B), apical part of median lobe narrowly triangular, expulsion clasp rounded and bent inwards distally, parameres slightly longer than the median lobe, each with about 10-13 thin and short setae.

*Length*: 2.5-3.2 mm (forebody 1.5 mm).

*Head* about as broad as elytra (27.7: 28; 1 unit = 0.025 mm), front broad (average distance between eyes: 17), with two shallow longitudinal furrows, median portion about as broad as each of the side portions, distinctly but slightly convex,

\* 295th Contribution to the Knowledge of Steninae.

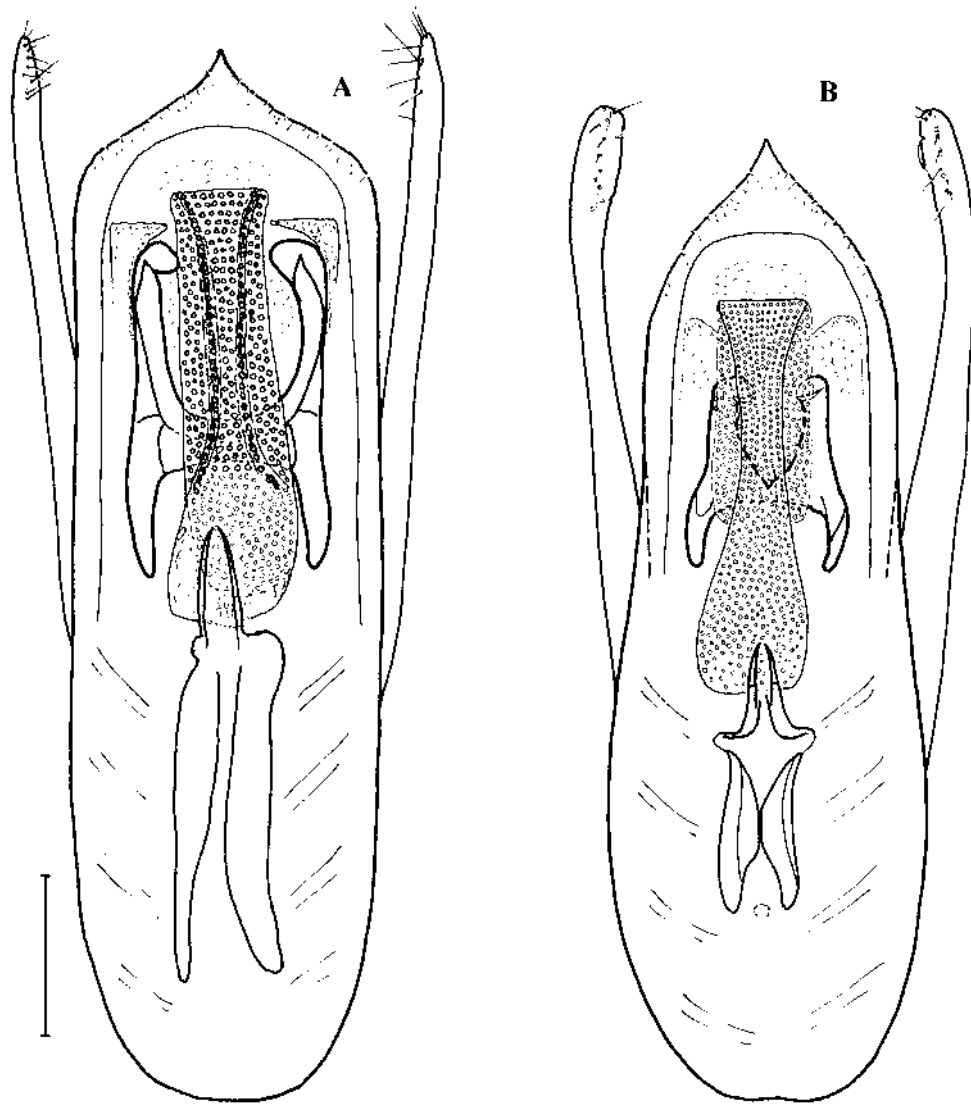


Fig. 1 – Aedeagus (ventral view): A, *Stenus (Hemistenus) benickiellus* Puthz (holotype); B, *Stenus (Hemistenus) stanae* spec. nov. (holotype). Scale bar = 0.1 mm

distinctly extending beyond the level of inner eye margins. Punctuation moderately fine and very dense, diameter of punctures about as large as medial cross section of antennal segment 3, interstices much smaller than half diameter of punctures, only in the actual middle of the median portion larger.

*Antennae* slender, when reflexed nearly extending towards the posterior margin of the pronotum, penultimate segments distinctly but slightly longer than broad.

*Pronotum* broad, broader than long (23: 21), broadest in about middle, sides convex anteriorly, moderately constricted behind; no impressions. Punctuation as coarse and nearly as dense as on frons, very homogenous.

*Elytra* subtrapezoid, about as broad as head, slightly broader than long (28: 26.5), shoulders rounded, sides broadened, broadest nearly at posterior margin, which is broadly emarginate; sutural and humeral impressions very shallow, a shallow transverse impression in about middle. Punctuation about as on the pronotum, but less dense, interstices mostly slightly larger than half diameter of punctures but not as large as punctures.

*Abdomen* very broad, paratergites distinctly bent upwards, those of segment 4 nearly as broad as metatibiae at apex, punctuation of paratergites moderately fine, very dense; basal furrows of first tergites deep, tergite 7 with a rudimentary membranous fringe apically (the species has reduced wings). Punctuation moderately fine (anteriorly) to fine (posteriorly), very dense, punctures on tergite 6 as large as one ommatidium near inner eye margins, interstices slightly smaller than diameter of punctures, punctuation on tergite 7 finer and slightly less dense.

*Legs* robust, metatarsi  $\frac{3}{4}$  as long as metatibiae, segment 1 as long as segments 2 and 3 combined, distinctly longer than the last segment; segment 4 simple.

The entire surface is densely reticulate.

*Female*. Unknown (see below).

*Discussion*. This new species is the sister species of *S. benickiellus* Puthz and belongs to the *alpicola*-group *sensu lato*. It is in nearly all respects similar to *S. benickiellus* (Fig. 1 A), but may be distinguished by coarser and much denser abdominal punctuation, longer elytra and the aedeagus (compare Fig. 1; see also Székessy, 1934). Both species are remarkable by their distally inwards bent expulsion hooks, which indicate that they do not belong to the *alpicola*-group *sensu stricto* but to the group *sensu lato* (see also Puthz, 2003).

*S. benickiellus* has been described from Sinaia (Bucegi Mts), from Bucsecs (Bucsecs = Bucegi Mts) and from Schuler Gebirge (Cristianul Mare Mt.) (males), female paratypes from Rosenauer Gebirge (Rosenau = Râșnov, near Postăvarul Mt., Brașov County) and from Zernester Gebirge (Zărnești, Piatra Craiului Mts) (1 specimen in the Field Museum of Natural History, Chicago, 1 specimen in the Muséum d'Histoire naturelle, Geneva).

Since the identification of females remain doubtful (there are only few specimens known!) the females from Zernester Gebirge may belong to the new species, which has to be verified by more material.

*Etymology.* This new *Stenus* was sent to me by Dr. Melania Stan, it is warmly dedicated to the discoverer.

#### ACKNOWLEDGEMENTS

I thank Dr. Melania Stan for the loan of the new species and for improving the manuscript.

#### *STENUS (HEMISTENUS) STANAE* SPEC. NOV. (COLEOPTERA: STAPHYLINIDAE), O NOUĂ SPECIE DE STAFILINID ENDEMICĂ ÎN CARPAȚII MERIDIONALII (ROMÂNIA)

#### REZUMAT

*Stenus (Hemistenus) stanae* spec. nov., endemică în Carpații Meridionali (Munții Piatra Craiului, Zărnești) este descrisă în această lucrare. *Stenus stanae* spec nov. este specia soră a lui *Stenus benickiellus* Puthz, ambele aparținând grupului *alpicola sensu lato*. Pentru cele două specii se prezintă diagnoza diferențială precum și desene ale caracterelor sexuale masculine.

#### LITERATURE CITED

- PUTHZ, V., 1967 - Über *Stenus (Parastenus) alpicola* Fauvel und andere abweichend gebaute paläarktische *Parastenus* - Arten (Col., Staphylinidae). 44. Beitrag zur Kenntnis der Steninen. Suomen hyönteistellinen Aikakauskirja, 33: 226-256.
- PUTHZ, V., 2003 - *Stenus alpicola* Fauvel und seine Nahverwandten (Coleoptera, Staphylinidae) 274. Beitrag zur Kenntnis der Steninen. Entomologische Blätter für Biologie und Systematik der Käfer, 98: 89-110.
- SZEKESY, V., 1934 - Revision der boreoalpinen Koleopteren auf vergleichend-anatomischer Grundlage. Matematikai és Természettudományi Ertesítő, 52: 423-458.

Received: March 22, 2006

Accepted: April 19, 2006

Limnologische Fluss-Station  
MPI-Limnologie, Damenweg 1  
D-36110 Schlitz, Germany  
e-mail: Stenus.Puthz@t.online.de